



**SOUTH ESSEX  
COLLEGES GROUP**

**FURTHER EDUCATION**

2026 | 27



# START YOUR CAREER HERE

**Courses For School Leavers with Progression  
through to Employment and University**

Vocational Courses | A Levels | T Levels |  
Apprenticeships | HTQs and Degrees

**BASILDON COLLEGE**

**SOUTHEND CITY COLLEGE**

**THURROCK COLLEGE**



Scan to visit  
our Linktree

Instagram Facebook TikTok YouTube

ALTERNATIVE FORMATS

This prospectus can be made available in large print, audio and Braille formats upon request.

Please contact student services at the college for further information.

Email: [admissions@southessex.ac.uk](mailto:admissions@southessex.ac.uk)

Telephone: 0345 52 12345

DISCLAIMER

The information in this document is believed to be accurate at the time of publication, however, changes may be made at a later date. The courses offered by SECG are under constant review and development, so students and their representatives should always contact the college directly for the most up-to-date information or visit our website [www.southessex.ac.uk](http://www.southessex.ac.uk)

\*Labour market data sourced from LMI for all, Annual Survey of Hours and Earnings (ASHE), Office for National Statistics (ONS)

CONTENTS

Welcome .....	5	ESOL .....	60
Why Choose Us? .....	6	Foundation and Supported Learning .....	62
Our Colleges.....	8	Hair and Beauty .....	64
Basildon College .....	10	Health .....	68
Southend City College .....	12	Information Technology .....	72
Thurrock College .....	14	Media .....	76
Student Support .....	16	Motor Vehicle .....	80
Safeguarding .....	17	Music .....	84
Additional Learning Support .....	18	Performing Arts .....	88
Application and Enrolment .....	20	Public Services .....	92
Careers .....	22	Science .....	96
A Levels .....	24	Sport .....	100
T Levels .....	25	Travel and Tourism .....	104
Apprenticeships .....	26	Course Progression .....	108
Vocational Study Programmes .....	28	University Centre South Essex .....	110
Our Courses .....	30	Higher Technical Qualifications (HTQs) .....	111
Animation and Games Design .....	32	Index .....	114
Art and Design.....	36		
Business Management and Accounting .....	40		
Catering and Hospitality .....	44		
Construction .....	48		
Early Years Education .....	52		
Engineering .....	56		



# WELCOME TO SOUTH ESSEX COLLEGES GROUP

**At South Essex Colleges Group we can help guide you to independence and adulthood in a secure, supportive and relaxed environment.**

By choosing to study at this vibrant, modern college you will receive a high quality education and an excellent student experience.

Our courses are designed to give you the knowledge and skills you will need to progress to your chosen career or pursue higher education.

We hope that you enjoy discovering more about the South Essex Colleges Group and that your time with us provides you with the foundation for a bright future.

**Denise Brown**  
Group Chief Executive



# WHY CHOOSE US?



**Ofsted Good Rating:** SECG was graded as 'Good' by Ofsted in October 2024, highlighting a positive learning environment and strong contribution to meeting skills needs.



**High Achievement Rates:** In 2023/24, SECG achieved an overall success rate of 89.1%, up by 6.2% from the previous year. 43 programmes achieved a 100% success rate in 2023/24, compared to just 15 in the previous year.



**Big Opportunities with a Local College Feel:** We offer a wide variety of courses across different levels, including Further Education (FE), Higher Education (HE), Adult Learning, and Apprenticeships. Students will experience the best of both worlds with the extensive resources and opportunities of the wider college group, combined with a personalised, community-focused approach at Southend City College, Basildon College, and Thurrock College.



**Impressive Qualification Numbers:** In 2023/24, students at SECG achieved a total of 16,121 qualifications, transforming their lives through learning.



**A safe environment to learn:** Our strong safeguarding and wellbeing practices provide a positive environment for learners to flourish: 95% of students reported feeling safe at college, reflecting robust safeguarding measures.



**Award-Winning Careers Programme:** SECG's careers programme achieved 100% in six of the eight Gatsby benchmarks and engaged with 3,213 unique learners, an 11% increase from the previous year.



**Industry Partnerships:** SECG has strong industry partnerships across various sectors, providing real-world learning environments and aligning with skills gaps.



**State-of-the-Art Facilities:** Campuses are equipped with modern facilities and cutting-edge technology, including industry-standard workshops, laboratories, creative studios, and digital suites.



**Experienced and Supportive Staff:** SECG's dedicated team of lecturers and support staff are experts in their fields, providing personalised support and guidance throughout students' educational journeys.

## EXCITING DEVELOPMENTS:

We are relaunching the National College of Creative Industries (NCCI) as a specialist further education provider. Focused on creative arts, backstage production, and technical theatre, the NCCI will offer hands-on, industry-led training through strong partnerships with creative sector employers.





# OUR COLLEGES



Via public transport:



25 mins (approx.)



**Thurrock Campus**  
High Street - Grays



**Basildon Campus**  
Basildon Town Centre  
Luckyn Lane  
Stephenson Rd



35 mins (approx.)



50 mins (approx.)



**Southend Campus**  
Luker Road  
Queens Road Gym

# DISCOVER BASILDON COLLEGE



**COLLEGE PRINCIPAL:  
JOHN NEWTON**

**Basildon College is made up of three sites at key locations in Essex. Each site has a clear roadmap for progression for all courses to enable students to progress to higher education or their career of choice.**

All courses are supported by industry and stakeholders, paying particular attention to local needs. Each campus has its own unique identity and is a centre for excellence in its own right targeting the following areas:

## **LUCKYN LANE CAMPUS SCHOOL OF ENGINEERING, CONSTRUCTION AND BUILDING SERVICES:**

Delivering a varied array of courses within the Engineering and Building Services (Plumbing and Electrical). The campus offers IoT and T Level courses along with apprenticeships and adult courses.

### **LOCATION:**

Luckyn Lane Basildon, SS14 3AX

### **TRAVEL:**

Basildon Train Station is a 30 minute walk away. A bus stop is located five minutes walk from the campus with the following buses stopping there: 300 and 10.

## **BASILDON TOWN CENTRE (BTC) CENTRE FOR DIGITAL TECHNOLOGIES:**

The focus of the provision at BTC is creative media and business which encompasses E-Sports, Networking, Cyber Security, Games Design and IT and is linked with industry leaders such as Microsoft, Amazon and Vista. The campus also offers courses such as Adult English and maths, IT, SEND and ESOL provisions at all ages.

### **LOCATION:**

Basildon Town Centre, SS14 1GP. If you are using a Sat Nav, please use postcode SS14 1DF

### **TRAVEL:**

Walking distance from Basildon train and bus stations.

## **STEPHENSON ROAD SCHOOL OF CONSTRUCTION, BUILDING SERVICES & AUTOMOTIVE:**

This campus is the lead for the Construction trades across South Essex Colleges Group. Construction courses cover Multi Skills, Carpentry and Joinery and Bricklaying. The campus also offers Automotive Engineering, with dedicated workshops and classrooms that meet industry standards. The campus also runs the IoT programmes and T Level programmes.

### **LOCATION:**

No. 28 & No. 30 Stephenson Road (off Progress Road), SS9 5LY

### **TRAVEL:**

The transport links are excellent with a comprehensive bus network nearby and parking spaces available on campus.





# DISCOVER SOUTHEND CITY COLLEGE

**Southend City College offers a fantastic range of facilities and learning spaces that allow students to study in industry-standard surroundings.**

These include Catering, Art & Design, Hair & Beauty, Sports, Science and Health and Social Care, all offering state-of-the-art facilities. We also offer Hairdressing and Beauty treatments at discount prices for members of the public which enable our students to experience a real-life salon environment.

The college also delivers Higher Education courses. We provide a clear roadmap for progression with a broad range of courses in all sectors, which are exciting, well-resourced and challenging so that students can progress across a range of qualifications linked directly to industry and higher education and strongly fit with the local need. Courses are supported by industry and stakeholders throughout the various provisions to ensure the opportunities to progress within college and beyond are available.



**COLLEGE PRINCIPAL:**  
**NICKI KELLY**

## **LUKER ROAD:**

Located next to Southend Central station, our Southend Campus offers an impressive range of subjects. The courses are set in realistic work environments using cutting-edge technology.

## **LOCATION:**

Luker Road, Southend-on-Sea, SS1 1ND

## **TRAVEL:**

The transport links are excellent with a comprehensive bus network and two major London-bound train lines (including nine rail stations in the borough) both within walking distance.

## **QUEENS ROAD GYM:**

The new gym boasts industry-standard equipment providing our students with the opportunity to experience what it's like to work and perform in a specialist gym environment. Students will also have the opportunity to use a variety of other specialist rooms including a sports treatment room, studio suite, consultation room and sport testing room. First aid, shower and changing facilities are also available for student use.

## **PERFORMING ARTS CENTRE:**

At Southend City College our state-of-the-art Performing Arts Centre allows students to work in industry-standard rehearsal studios. Acting, dance and musical theatre are all catered for with amazing spaces and top-of-the range equipment.





DISCOVER

# THURROCK

COLLEGE



**COLLEGE PRINCIPAL:**  
**BRAD BROOKS**

Thurrock College is based right next door to Grays train station in Essex and comprises of two campus buildings - East & West. The college has a clear roadmap for progression for all courses to enable students to progress to higher education or their career of choice.

All courses are supported by industry and stakeholders, paying particular attention to the local needs of our residents.



**LOCATION:**

High Street, Grays, Essex, RM17 6TF

**TRAVEL:**

Thurrock has excellent transport links with trains and buses going to London and all over Essex frequently. Located only a two-minute walk from the train station.

Thurrock College has its own, unique identity and is a centre for excellence in its own right, a wonderful college to attend which is rich in resources and offers courses in the following areas:

**Business & Logistics**

**Construction & Engineering**

**Multi-Skills & Plumbing**

The campus offers **IoT** and **T Level** courses along with **apprenticeships** and adult courses.

**Early Years**

**Health & Social Care**

**Beauty Therapy**

**Hairdressing**

**Theatrical Media Hair & Make Up**

**Professional Cooking / Catering & Hospitality**

**Travel & Tourism**

**Music**

**Performing & Production Arts**

Thurrock College also offers courses such as Adult English and maths, SEND, EHE and ESOL provisions at all ages.



# STUDENT SUPPORT

## TUITION FEES

Tuition fees cover the cost of tuition and examinations. You do not have to pay tuition fees if you are aged between 16 and 18 and have been living in the UK or an EU country for three years prior to starting your studies.

If you have not been living in the UK or an EU country for three years prior to starting your studies, don't worry, you may still be able to study for free or at a reduced cost. Please refer to our website for up-to-date details.

## FURTHER FUNDING ASSISTANCE

Discretionary funds are available to assist students with an identified financial need. These funds can be used to assist with travel costs as well as essential learning resources.

## 16-19 BURSARY FUND

If you are aged between 16 and 18 as of 31 August 2026 and your family is on a low income you may be eligible to receive a discretionary award towards the additional costs associated with your course.

In some circumstances you may also be awarded a fixed amount to help support you during your studies.

## CARE TO LEARN

If you are a parent aged under 20, you may be eligible to apply for childcare and travel support.

## TRAVEL ASSISTANCE

If South Essex Colleges Group is the nearest provider of your chosen course and if you live more than three miles from the college campus, your local authority can advise whether you are eligible for help with travel.



# SAFEGUARDING

**Your safety is very important to us so we take many measures to ensure that everyone feels safe and supported in college.**

## SAFEGUARDING

The Safeguarding Team can offer help, information, advice and guidance with issues at home, relationship advice/concerns, living arrangements or if you are looking to have support or counselling for your general wellbeing. The team's aim is to work with you to remove any barriers that you might be facing so you can succeed with your studies. You can be referred by a member of staff or approach the team independently if you think you need support. They are available to anyone who is a student at South Essex Colleges Group, no matter what course you are on or what age you are.

The team will help you whether you are a further or higher education student.

The Team also offer bespoke support to Care Experienced young people throughout their studies at the college. Our Advisers will work with you, your carers and social worker to ensure you can access your education and are successful in your studies. They will also support you to apply for the Vulnerable Bursary which can support travel and educational equipment.

Visit our website for more information on the college Safeguarding Service:

[www.southessex.ac.uk/services-and-support/safeguarding](http://www.southessex.ac.uk/services-and-support/safeguarding)

## LOCATION

The Safeguarding Team are located at:  
**Southend City College**  
Wellbeing centre, first floor, next to the lifts.

## CONTACT US

You can visit the team at each campus, call them on **0345 521 2345**, email them at [safeguarding@southessex.ac.uk](mailto:safeguarding@southessex.ac.uk) or get in touch via Moodle.

## COLLEGE GUARDIANS

College guardians are present at every main campus. They are the first point of contact to safeguard everyone on site.

## WHAT DOES A GUARDIAN DO?

- ✓ Ensure only permitted persons are on site by checking the wearing of lanyards
- ✓ Act as a frontline contact for safeguarding issues – they will then pass any concerns onto the relevant people
- ✓ Provide support to students, listen and give advice where appropriate
- ✓ Challenge negative behaviour
- ✓ Carry out stop & search procedures if necessary







# ADDITIONAL LEARNING SUPPORT



**We welcome students who have a disability and/or learning difficulty. We appreciate and value the contribution that individuals with learning difficulties and/or disabilities bring to the college.**

The college is committed to making students with additional support needs feel valued, respected and supported. We aim to create an inclusive environment where all students are treated on the basis of their merits, ability and potential. We are experienced in supporting learners with a wide range of needs. If you have a disability or learning difficulty our team are here to help you find the appropriate support at college.

We want you to feel safe and supported at college and enjoy being included in every aspect of student life with us. If you have a special educational need or disability and want to discuss this, we have staff based at each of our main campuses who you can speak to regarding your needs.



## WHERE TO FIND THE ALS TEAM

**Southend:** ALS team room, 2<sup>nd</sup> floor in room 2E.40

Contact us by email:  
[additionallearningsupport@southessex.ac.uk](mailto:additionallearningsupport@southessex.ac.uk)





# APPLICATION & ENROLMENT



## OUR ADVISERS ARE ON HAND TO SUPPORT YOUR APPLICATION EVERY STEP OF THE WAY

As well as being able to speak to our advisers, you can access an online help section on the college website.

Call: **0345 52 12345**

Web: [www.southessex.ac.uk/apply](http://www.southessex.ac.uk/apply)

### Once you have found a course you wish to apply for you can:

Apply online via our website.

Visit [www.southessex.ac.uk/apply](http://www.southessex.ac.uk/apply)

Visit the admissions team during one of our open events. For information on the next event please visit our website:

[www.southessex.ac.uk/events](http://www.southessex.ac.uk/events)

## COURSE ADVICE

If you are not sure which course is right for you, we are here to help. Our expert course advisers are available face-to-face at open events, and on the telephone or via email on weekdays.

Email: [admissions@southessex.ac.uk](mailto:admissions@southessex.ac.uk)

If you would like advice about how to make an application, or what happens next, please contact our applicant advisers via [admissions@southessex.ac.uk](mailto:admissions@southessex.ac.uk). After you have applied, you can check the status of your application online.

## CAREER ADVICE

Our expert careers coaches are always happy to help. Whether it is course or career advice or even if you are thinking of continuing your studies elsewhere, we will help you reach informed decisions.

## ADDITIONAL SUPPORT

If you need additional support, please contact either our safeguarding or additional learning support team. For more info on safeguarding see [page 17](#). For more info on additional learning support see [page 18](#).

## APPRENTICESHIPS

For all information regarding Apprenticeships see [page 26](#) or visit our website [www.southessex.ac.uk/workforce/apprenticeships](http://www.southessex.ac.uk/workforce/apprenticeships)



# CAREER

## FOCUSED COURSES

At SECG we understand that studying is a stepping stone to preparing you for a successful and fulfilling career in the real world. Our carefully designed careers-focused courses are tailored to provide you with the skills, experience, and expertise necessary to thrive in today's dynamic job market.



### WHY CHOOSE CAREERS-FOCUSED COURSES AT SOUTH ESSEX COLLEGES GROUP?

- 1. Relevance to Industry Trends:** Our courses are tailor-made with the latest industry trends and demands in mind. We have close links with local and national companies and strive to ensure that the skills you gain are current and directly applicable to your chosen career.
- 2. Hands-on Approach:** We believe in learning by practice. Our careers-focused courses emphasise the practical experience allowing you to apply theory to workplace scenarios. Studying with us means that you will gain invaluable practical skills that employers seek.
- 3. Industry Connections:** At SECG we work closely with employers who actively engage with our students. Through guest lectures, workshops, networking events, and mentorship programs, you'll have the opportunity to connect with professionals who can offer insights and advice on your chosen career path.
- 4. Career Guidance:** Navigating the complexities of today's job market can be daunting. Our dedicated careers team is here to provide personalised guidance, helping you craft a compelling CV, prepare for interviews, and explore various career options. We are committed to your success beyond graduation.

### WHERE CAN CAREERS-FOCUSED COURSES TAKE YOU?

The possibilities are endless. Use your studies to progress to higher education, an apprenticeship or secure your dream career. From entry-level roles to leadership positions your journey to fulfilling employment starts at SECG.

# COURSE TYPES

### A LEVELS (AVAILABLE AT THURROCK CAMPUS)

Delivered in partnership with the South East Institute of Technology and working closely with key local employers, students will have access to work placements, apprenticeships and exclusive interviews for degree apprenticeships.

We are committed to providing a pathway for learners from widening participation communities to access advanced level studies and ultimately, access to high level careers in technical fields. The Academy of Advanced Technology is offering advanced level qualifications in a diverse and dynamic environment that will propel our young people into technical careers equipped with maturity and academic excellence. For more info see [page 24](#).

### FOUNDATION AND SUPPORTED LEARNING

We offer a range of courses including an independent living programme for students who have SEND and/or an Educational and Health Care Plan to develop the skills required to get through life successfully. We also support young people who found that school was not for them and need a new experience at college in order to develop a trade and gain those vital entry level qualifications into work or further education. For more info see [page 62](#).

### T LEVELS

These qualifications are designed to develop skilled workers for sectors of the UK economy. Alongside technical skills, learners achieving a T level will possess the literacy, numeracy and digital skills, wider transferable skills and attitudes required to be successful in specific careers. For more info see [page 25](#).

### APPRENTICESHIPS

An apprenticeship is a job with training. Through an apprenticeship, an apprentice will gain the technical knowledge, practical experience and wider skills and behaviours that they need for their immediate job and future career. For more info see [page 26](#).

### FOUNDATION T LEVEL

The T Level Foundation programme is a 1-year post-GCSE study programme designed to support progression to, and success on, a T Level. It's aimed at students who would like to do a T Level but would benefit from additional preparation and support before starting one. The programme gives students the opportunity to study technical content aligned to T Levels and develop their English, maths and digital skills, alongside work experience and personal development.

### VOCATIONAL/STUDY PROGRAMMES

Vocational qualifications are ideal if you know what job or job sector you want to go into. They offer you a different learning experience to A Levels which traditionally lean more towards academic learning. The courses are designed so that you learn in a practical way about your chosen job sector.



# WHAT IS AN... A LEVEL



We are pleased to offer this Sixth Form provision as part of our ongoing commitment to ensuring that learners are able to access advance level studies and ultimately, access high level careers in the most burgeoning industries.

The Academy of Advanced Technology will offer A Level qualifications in a diverse and dynamic environment that will propel young people into technical careers equipped with maturity and academic excellence.

## ADVANCED LEVEL QUALIFICATIONS

The Academy of Advanced Technology is offering advanced level qualifications in a diverse and dynamic environment that will propel our young people into technical careers equipped with maturity and academic excellence.

## STRONG PARTNERSHIPS

Delivered in partnership with the South East Institute of Technology (SEIoT) and working closely with key local employers, students will have access to work placements, apprenticeships and exclusive interviews for degree apprenticeships.

## SUPPORT AND GUIDANCE

Our teachers hold drop-in sessions for each department to offer extra help or support to any who need it. Each course also has regular assessments to ensure that all our students have a good sense of their strengths and areas of development.

More information: [www.southessex.ac.uk/alevels](http://www.southessex.ac.uk/alevels)



## PATHWAYS:

A Level Medical Pathway

- Includes: Chemistry, Biology and Maths

A Level Engineering Pathway

- Includes: Chemistry, Physics and Maths

Available at:

**Thurrock College**

# WHAT IS A... T LEVEL



## T LEVELS:

- Lasts for two years and are studied five days per week (80% classroom and 20% work placement)
- Are equivalent to three A Levels, carrying the equivalent UCAS points
- Prepare learners for a skilled career by providing practical skills and knowledge
- Include an extended industry placement of at least 315 hours (with the exception of Early Years where this is 375)
- Are assessed through a combination of exams, course work, workplace reviews, an employer project and an end point assessment. To pass the qualification learners must have fully completed the extended placement and gain the necessary level of work experience (validated by the employer)



T levels involve more classroom study than apprenticeships, which means you can experience an industry while you continue your studies.

The qualifications are designed to develop skilled workers for sectors of the UK economy. Alongside technical skills, learners achieving a T Level will possess the literacy, numeracy and digital skills, wider transferable skills and attitudes required to be successful in specific careers.

As part of your course you will be working with an employer partner within your relevant sector/course specialism in an industry placement which will last for at least 45 days (315 Hours).

Like A Levels, there are no tuition fees to study a T Level if you start before you are 19 and the college pays for any DBS checks that are required.

More information: [www.southessex.ac.uk/tlevels](http://www.southessex.ac.uk/tlevels)

**T-LEVELS**  
THE NEXT LEVEL QUALIFICATION



# WHAT IS AN... APPRENTICESHIP



**An apprenticeship will provide you with the skills and knowledge required to progress in a chosen career pathway whilst gaining valuable on-the-job experience that employers look for when recruiting new staff.**

Apprenticeships are nationally-recognised pathways that can lead to a number of different employment routes. Some higher apprenticeships have integrated degrees that enable you to gain a degree without any of the student debt you might have via a more traditional path at university.

An apprenticeship programme will consist of a number of elements. In order to achieve the programme fully and receive your apprenticeship certificate, you will need to successfully complete ALL elements of the programme.

## SKILLS

- These are the practical competencies that you will need to be able to demonstrate

## KNOWLEDGE

- These are the theoretical elements that you will need to learn and understand

## BEHAVIOURS

- These are the attributes that professionals and employers in the specific occupation would need to demonstrate

## END POINT ASSESSMENTS

- All Apprenticeships require the apprentice to complete an End Point Assessment (EPA) at the end of their learning. The requirement of the EPA is set by the employer group or 'trailblazers' that set the standard and can be found in the assessment plan. The EPA is carried out by an independent organisation that is chosen by the employer and the outcome determines if you the apprentice has passed the Apprenticeship.
- End-point Assessments are graded and an apprenticeship certificate is only awarded after the assessment is successfully completed

For more information on apprenticeships visit:

[www.southessex.ac.uk/apprenticeships](http://www.southessex.ac.uk/apprenticeships)



# WHAT IS A... VOCATIONAL STUDY PROGRAMME

## STUDY PROGRAMMES

All of our 16 to 19 study programmes are designed to provide you with a structured and challenging learning programme that supports your development and progression in line with your career plans. The college will tailor your study programme to suit you, but they will typically combine the elements below:

- Substantial academic, applied or vocational qualifications that stretch you and prepare you for education at the next level or to employment
- English and maths where students have not yet achieved a GCSE grade 4 (reformed grading) or grade C (legacy grading)
- Other non-qualification activity to develop your character, skills, attitudes and confidence, and to support progression
- Students who do not achieve a grade 4 or above in English and/or maths will be required to complete an English and/or maths qualification via the Century platform. Students will engage with at least three hours a week study via the online platform. The Century platform is an online software system that uses artificial intelligence to create a personalised, adaptive and differentiated set of learning. Students will work on a set of skills that are unique to them, the system will produce results and feedback tailored to meet individual

learning needs alongside tasks that are mapped against the GCSE curriculum and encourage stronger learning outcomes.

## INDUSTRY PLACEMENTS

As a part of your study programme you will be required to complete an industry placement related to your course. The amount of hours you will need to complete will depend on the course you are studying.

This opportunity allows you to apply what you have learnt in the classroom to real world professional situations.

## WHAT IS AN INDUSTRY PLACEMENTS?

Industry Placements are a very brief, experienced based learning opportunity that could range from a day to a couple of weeks. It can take numerous forms, here are a few types of the industry placements that we offer:

- **Physical placement** – this is the most common and popular placement as you have the opportunity to fully immerse yourself in the world of work with hands on support
- **Virtual work experience** – this is hugely beneficial in supporting students to engage with employers through digital platforms while gaining meaningful job interactions.



- **Work related activities (also known as Projects)** – this is where an employer will set a series of tasks to complete relating to their industry
- **Industry placements** – this is an extended physical placement and equates to 56 days over an entire academic year, you will gain an additional certificate for this to add to your CV

## HOW DOES WORK EXPERIENCE BENEFIT YOU?

Work experience supports you to make career decisions, develop employability skills and make a successful transition into further study or the workplace.

- ✓ You will develop transferable skills such as team working, communication and timekeeping skills
- ✓ You can try the job role and the company to check it's the right industry for you
- ✓ Having work experience listed on your CV instantly draws the employers' attention towards the initiative taken by students to enhance their knowledge and skills in their chosen career path
- ✓ You will have an introduction to workplace recruitment practices
- ✓ You will increase your independence, maturity and self-confidence



# OUR COURSES & CAREERS



We offer an extensive range of courses to start you on your path to your chosen career or higher education. For a full list of all courses available at all our colleges visit:

[www.southessex.ac.uk](http://www.southessex.ac.uk)

## KEY:

### **BASILDON COLLEGE:** (see page 10)

<b>BTC</b>	Basildon Town Centre – Centre for Digital Technologies
<b>LL</b>	Luckyn Lane – School of Engineering, Construction and Building Services
<b>SR</b>	Stephenson Road - School of Construction, Building Services and Automotive

### **SOUTHEND CITY COLLEGE:** (see page 12)

<b>SC</b>	Southend City College
-----------	-----------------------

### **THURROCK COLLEGE:** (see page 14)

<b>TC</b>	Thurrock College
-----------	------------------

### **OTHER:**

<b>HH</b>	High House Production Park
<b>WB</b>	Work Based







# ANIMATION & GAMES DESIGN



Studying Animation and Games Design offers a practical, hands-on approach to developing creative and technical skills through real-world projects. You'll work with industry-standard tools and techniques in 2D and 3D animation, game development, and interactive storytelling, building a strong and varied portfolio.

Courses also develop critical thinking, problem-solving, and teamwork—key skills for the creative industries. You'll gain experience in areas such as concept art, animation, level design, and game mechanics, preparing you for careers in animation and gaming.

## ANIMATION & GAMES DESIGN

### LEVEL 1

**Animation, Games, and Esports**  
Level 1 Diploma (BTC) 1 year

### LEVEL 2

**Computer Game Design & Animation**  
Level 2 Diploma (BTC) 1 year

### LEVEL 3

**Creative Media Production (Animation & Concept Art)**  
Level 3 Extended Diploma (BTC) 2 years

**Creative Media Production (Games Design)**  
Level 3 Diploma (BTC) 2 years

**Ignite: Creative Projects in Esports, Animation and Games**  
Level 3 Diploma (BTC) 1 year

### UCSE

Progress on to a range of Media based courses at our University Centre South Essex such as Animation BA (Hons) & Games Design BSc (Hons)

For more info on UCSE see page: 110



**Computer Games Tester**  
Salary Range: £24,000 - £36,000

**Animator**  
Salary Range: Variable

**Computer Games Developer**  
Salary Range: £27,000 - £71,000

**Product Designer**  
Salary Range: £22,000 - £45,000

## Level 1

### Animation, Games, and Esports Level 1 Diploma (BTC) 1 year

**Entry Requirements:**

- Two GCSEs at grade 2 including maths or English, or an Entry 3 qualification, or equivalent
- Successful attendance at interview
- Successful attendance at transition event
- You will be asked to provide evidence of your ability in the subject which could be in the form of a portfolio

## Level 2

### Computer Game Design & Animation Level 2 Diploma (BTC) 1 year

**Entry Requirements:**

- Level 1 qualification or GCSEs x 2 at grade 3 in maths or English
- Successful attendance at interview event
- You will be asked to provide evidence of your ability in the subject which could be in the form of a portfolio

## Level 3

### Creative Media Production (Animation) Level 3 Extended Diploma (BTC) 2 years

### Creative Media Production (Games Development) Level 3 Diploma (BTC) 2 years

### Ignite: Creative Projects in Esports, Animation and Games Level 3 Diploma (BTC) 1 year

**Entry Requirements:**

- Four GCSEs at grade 4 including English and maths
- Or
- Level 2 qualification at a Merit, preferably UAL Level 2 in Creative Media Production & Technology, and evidence of engaging with making progress from grade 3 to grade 4 in English and maths
  - All applicants will need to attend an interview with the course team to review a portfolio of work and establish suitability for the study programme

## UCSE

### Animation BA (Hons) (BTC) 3 years

### Games Design BSc (Hons) (BTC) 3 years

**Entry Requirements:**

You will need a minimum of 64 UCAS points from one or more of the following:

- A Levels
- T Levels
- Extended Diploma
- Foundation Diploma in Art and Design (Level 3 or 4)
- Or equivalent EU/International qualifications, such as International Baccalaureate Diploma
- And English GCSE passes at grade 4 or above

This list is not exhaustive, other qualifications may be considered. Entry to this course will also be determined by the quality of your application, looking primarily at your portfolio/showreel of work, personal statement and reference.





# ART & DESIGN



Studying an art-related subject offers a practical, hands-on approach to developing creative skills through projects and real-world applications. You'll explore different mediums and techniques, building a varied portfolio that highlights your talent and versatility. These courses also develop critical thinking, problem-solving, and innovation, laying a strong foundation for further study or creative careers.

Many programmes include live briefs and collaborations with industry professionals, providing insight into the creative sector. You'll gain experience in areas such as graphic design, fine art, photography, and multimedia, boosting employability and preparing you for industry demands.

## ART & DESIGN

### LEVEL 1

**Art and Design**  
Level 1 Diploma **(SC)**  
1 year

### LEVEL 2

**Art and Design**  
Level 2 Extended  
Certificate **(SC)** 1  
year

### LEVEL 3

**3D Design**  
Level 3 Extended  
Diploma **(SC)** 2  
years

**Fashion**  
Level 3 Diploma  
**(SC)** 2 years

**Fashion Business  
and Retail**  
Level 3 Diploma  
**(SC)** 2 Years

**Fine Art**  
Level 3 Extended  
Diploma **(SC)** 2  
years

**Graphic Design**  
Level 3 Extended  
Diploma **(SC)** 2  
years

**Illustration**  
Level 3 National  
Diploma **(SC)** 2  
years

**Photography**  
Level 3 Extended  
Diploma **(SC)** 2  
years

### LEVEL 4

**Art and Design**  
Level 4 Foundation  
Diploma **(SC)** 1 year

### UCSE

Progress on to a range of creative offerings at our University Centre South Essex with BA (Hons) available in: Fine Art, Graphic Design and Illustration, Photography and more...

For more info on UCSE see page: 110

### Graphic and Multimedia Designers

Salary Range: £18,920 - £40,750

### Art Officers, Producers & Directors

Salary Range: £24,370 - £52,480

### Artists

Salary Range: £23,190 - £49,940

### Web Designers

Salary Range: £26,840 - £57,800

## Level 1

### Art and Design Level 1 Diploma (SC) 1 year

#### Entry Requirements:

- Two GCSEs at grade 2 including maths or English, or an Entry 3 qualification, or equivalent
- Successful attendance at interview
- Successful attendance at transition event
- You will be asked to provide evidence of your ability in the subject which could be in the form of a portfolio

## Level 2

### Art and Design Level 2 Extended Certificate (SC) 1 year

#### Entry Requirements:

- Level 1 qualification or GCSEs x 2 at grade 3 in maths or English
- Successful attendance at interview event
- You will be asked to provide evidence of your ability in the subject which could be in the form of a portfolio

## Level 3

### 3D Design Level 3 Extended Diploma (SC) 2 years

### Fine Art Level 3 Extended Diploma (SC) 2 years

### Graphic Design Level 3 Extended Diploma (SC) 2 years

### Illustration Level 3 National Diploma (SC) 2 years

### Photography Level 3 Extended Diploma (SC) 2 years

#### Entry Requirements:

- Level 2 qualification or GCSEs x 4 at grade 4 - one to be grade 4 in English or maths dependent on vocational subject to be studied
- You will be asked to provide evidence of your ability in the subject which could be in the form of a portfolio
- Successful attendance at interview event

### Fashion Level 3 Diploma (SC) 2 years

#### Entry Requirements:

- Four GCSEs at grade 4 including maths, English and an art-related subject, or
- Art and Design Level 2 Extended Certificate plus maths and English at grade 4, or equivalent
- You will be asked to provide evidence of your ability in the subject which could be in the form of a portfolio
- Successful attendance at interview event

### Fashion Business and Retail Level 3 Diploma (SC) 2 years

#### Entry Requirements:

- Four GCSEs at grade 4 including maths, English and an art or business-related subject, or
- Business or Art and Design Level 2 Diploma plus maths and English at grade 4, or equivalent
- You will be asked to provide evidence of your ability in the subject which could be in the form of a portfolio
- Successful attendance at interview event

## Level 4

### Art and Design Level 4 Foundation Diploma (SC) 1 year

#### Entry Requirements:

- One A Level or Art and Design Level 3 Extended Diploma plus three GCSEs at grade 4 including maths and English and an art-related subject, or equivalent
- You will be asked to provide evidence of your ability in the subject which could be in the form of a portfolio
- Successful attendance at interview event

## UCSE

### Fine Art BA (Hons) (SC) 3 years

### Interior & Spatial Design (SC) 3 years

### Graphic Design & Illustration BA (Hons) (SC) 3 years

### Photography BA (Hons) (SC) 3 years

#### Entry Requirements:

You will need a minimum of 64 UCAS points from one or more of the following:

- A Levels
- T Levels
- Extended Diploma
- Foundation Diploma in Art and Design (Level 3 or 4)
- Or equivalent EU/International qualifications, such as International Baccalaureate Diploma
- And English GCSE passes at grade 4 or above

This list is not exhaustive, other qualifications may be considered. Entry to this course will also be determined by the quality of your application, looking primarily at your portfolio/showreel of work, personal statement and reference.



# BUSINESS MANAGEMENT & ACCOUNTING



Studying business subjects offers a practical approach to understanding the fundamentals of the business world. These courses combine theoretical knowledge with real-world applications, including case studies, and projects, which equip students with the skills needed for a successful career in business. Recognised by employers and higher education institutions, these qualifications provide a strong foundation for further education and various career opportunities in the business sector. Additionally, you will develop critical thinking, problem-solving and leadership skills that are essential in any professional setting.

## BUSINESS MANAGEMENT

### LEVEL 1

**Business and Retail (Business and Administration Pathway)**  
Level 1 Diploma **(SC)**  
**(TC)** 1 year

### LEVEL 2

**Business Foundation**  
T Level **(SC)** **(TC)**  
1 year

**Customer Service Practitioner**  
Apprenticeship  
Level 2 **(WB)**  
13 months

### LEVEL 3

**Business**  
Level 3 Extended Diploma **(TC)** 2 years

**Business Administrator Apprenticeship**  
Level 3 **(WB)** 18 months

**Team Leader/Supervisor**  
Apprenticeship CMI Level 3 **(WB)** 18 months

### HTQ

**Leadership and Management for England**  
Level 5 HTQ **(TC)**  
2 years

**Business Sales Executives**  
Salary Range: £22,440 - £48,340

**Business and Financial Project Management Professionals**  
Salary Range: £34,380 - £74,050

**Business Associate Professionals**  
Salary Range: £18,430 - £39,690



## ACCOUNTING

### LEVEL 2

**Accounting Foundation**  
T Level AAT  
Bookkeeping Certificate **(SC)**  
1 year

**Accounts Finance Assistant**  
Apprenticeship AAT  
Level 2 **(WB)** 2 years

### LEVEL 3

**Assistant Accountant**  
Apprenticeship AAT Level 3 **(WB)** 2 years

### T LEVEL

**Accounting**  
T Level **(SC)** 2 years



## Level 1

### Business and Retail (Business and Administration Pathway) Level 1 Diploma (SC) (TC) 1 year

- Entry Requirements:**
- Grade 2 GCSE English and maths or equivalent

## Level 2

### Business Foundation T Level (SC) (TC) 1 year

- Entry Requirements:**
- Level 1 qualification in business, GCSEs x 2 at grade 3 in maths and English

### Accounting Foundation T Level AAT Bookkeeping Certificate (SC) 1 year

- Entry Requirements:**
- Grade 3 in English and maths
  - Successful attendance at interview event
  - Successful attendance at transition event

### Accounts Finance Assistant Apprenticeship AAT Level 2 (WB) 2 years

- There are no formal entry requirements for this apprenticeship
- Previous knowledge of accounting or a Level 1 Bookkeeping qualification would be advantageous but not essential
- Apprentices will need to be employed in a relevant finance, bookkeeping or accounting role

### Customer Service Practitioner Apprenticeship Level 2 (WB) 13 months

- Entry Requirements:**
- Employed in a trade/industry related to the apprenticeship
  - You will need to find employment in a related trade/industry before applying for the apprenticeship programme you wish to complete

- Learners will be expected to achieve Entry Level 3 English and maths initial assessment

## Level 3

### Business Level 3 Extended Diploma (TC) 2 years

- Entry Requirements:**
- Five GCSEs at grade 4 including maths and English, or
  - Skills for Business and Administration Level 2 Diploma plus maths and English at level 1, or equivalent
  - Successful attendance at interview event

### Business Administrator Apprenticeship Level 3 (WB) 18 months

- Entry Requirements:**
- Employed in a trade/industry related to the apprenticeship
  - You will need to find employment in a related trade/industry before applying for the apprenticeship programme you wish to complete
  - Age restrictions: 16+
  - GCSE maths grade 4 or Functional Skill in maths Level 2
  - GCSE English Language grade 4 or Functional Skill in English Level 2
  - Working in a job role such as an Administration Officer, Administration Executive, Administration Team Leader, Office Supervisor, Personal Assistant or a Secretary for a minimum of 30 hours per week

### Team Leader/Supervisor Apprenticeship CMI Level 3 (WB) 18 months

- Entry Requirements:**
- Employed in a trade/industry related to the apprenticeship
  - You will need to find employment in a related trade/industry before applying for the apprenticeship programme you wish to complete

- Individual employers will set the selection criteria for their apprentices though most will be expected to hold 5 GCSEs at grade 5 or higher
- Prior experience may also be considered
- Apprentices should also have achieved qualifications in English and mathematics at a minimum of level 2 or equivalent. Where this is not the case, apprentices must complete these by the end of the Apprenticeship

### Assistant Accountant Apprenticeship AAT Level 3 (WB) 2 years

- Entry Requirements:**
- Employed in a trade/industry related to the apprenticeship
  - You will need to find employment in a related trade/industry before applying for the apprenticeship programme you wish to complete
  - 5 GCSEs with maths and English at grade 5 or Functional Skills Level 2 English and maths
  - Good keyboarding skills are essential as well as a good knowledge of Microsoft Office
  - Achievement of an AAT Level 2 Foundation Certificate in Accounting is advantageous but not essential

## T Level (Level 3)

### Management and Administration (Business Support) T Level (SC) 2 years

### Management and Administration Team (Leadership and Management Pathway) (SC) 2 years

- Entry Requirements:**
- Maths and English GCSE at grade 4 or above
  - A total of 5 GCSEs at grade 4 or above
  - This course requires students to complete 315 hours of work placement in a role that will include some administration

- or management tasks. It will be at the discretion of the employer if the placement is paid or unpaid
- A keen interest in business

### Accounting T Level (SC) 2 years

- Entry Requirements:**
- At least 5 Grade 4's at GCSE including English and maths
  - Successful interview

## HTQ (Level 5)

### Leadership and Management for England Level 5 HTQ (TC) 2 years

- Entry Requirements:**
- a Level 3 qualification in Business
  - a GCE Advanced Level profile that demonstrates strong performance in a relevant subject or adequate performance in more than one GCE subject. This profile is likely to be supported by GCSE grades at 9 to 4 (or equivalent) in subjects such as maths and English
  - other related Level 3 qualifications
  - an Access to Higher Education Diploma from an approved further education institution
  - relevant work experience, or
  - an international equivalent to the above qualifications





# CATERING & HOSPITALITY

Studying catering and hospitality subjects will provide you with a comprehensive and practical education in the dynamic world of food service and hospitality management. These courses combine theoretical knowledge with hands-on experience in areas such as culinary arts, event planning, and hotel management, ensuring students are well-prepared for various roles in the industry.

Recognised by employers and higher education institutions, these qualifications enhance career prospects and provide a strong foundation for further education. Additionally, you will develop essential soft skills such as communication, teamwork and customer service, which are crucial for success in the hospitality sector.



## CATERING & HOSPITALITY

### LEVEL 1

**Introduction to Professional Cookery**  
Level 1 Certificate  
(SC) (TC) 1 year

### LEVEL 2

**Professional Cookery**  
Level 2 Diploma  
(SC) (TC) 1 year

**Professional Patisserie and Confectionery**  
Level 2 Diploma  
(SC) 1 year

### LEVEL 3

**Chef De Partie**  
Apprenticeship  
Level 3 (WB) 18 months

**Professional Patisserie and Confectionery**  
Level 3 Diploma  
(SC) 1 year

**Advanced Professional Cookery (Kitchen and Larder)**  
Level 3 Diploma  
(TC) 1 year



#### Baker

Salary Range: £16,380 - £28,390

#### Chef

Salary Range: £16,900 - £36,400

#### Restaurant Manager

Salary Range: £19,970 - £43,000

#### Catering Manager

Salary Range: £16,840 - £36,260



"This has been the best year of my life so far. Enrolling on this course is the best decision I've ever made. I would 100% recommend the Culinary Skills course to anyone who is interested and dedicated to working in the industry. You gain so many skills and receive great support."

**Darcy Westell - Hospitality & Catering Student of the Year 2025**

## Level 1

### Introduction to Professional Cookery Level 1 Certificate (SC) (TC) 1 year

#### Entry Requirements:

- Four GCSEs at grade 2 including maths and English plus two other subjects
- Successful attendance at interview

## Level 2

### Professional Cookery Level 2 Diploma (SC) (TC) 1 year

#### Entry Requirements:

- Level 1 qualification or GCSEs x 2 at grade 3 in maths and English
- Successful passing of skills test in the kitchen
- Successful attendance at interview event

### Professional Patisserie and Confectionery Level 2 Diploma (SC) 1 year

#### Entry Requirements:

- Level 1 qualification or two GCSEs at grade 3 in maths and English
- Successful attendance at interview

## Level 3

### Chef De Partie Apprenticeship Level 3 (WB) 18 months

#### Entry Requirements:

- Must have a Level 2 Diploma in Cookery/Culinary skills
- On the job training (Work placement of fine dining standard of food required)
- Passed Maths and English GCSE. (Students at grade 3 for Maths and English will be considered under discussion if requiring only one of the GCSEs)

### Professional Patisserie and Confectionery Level 3 Diploma (SC) 1 year

#### Entry Requirements:

- Level 2 qualification in Patisserie or similar, plus GCSE grade 4 in English and maths
- Successful attendance at interview event

### Advanced Professional Cookery (Kitchen and Larder) Level 3 Diploma (TC) 1 year

#### Entry Requirements:

- Level 2 Cookery qualification, plus GCSE grade 4 in English and maths
- Successful attendance at interview event





# CONSTRUCTION

Studying construction subjects offers a practical and in-depth understanding of the construction industry, combining theoretical knowledge with hands-on experience in areas like building techniques, project management, and health and safety. These courses prepare students for various roles within the sector, from site management to architectural design.

This practical approach ensures that you will gain essential skills and insights, making you highly employable and ready to meet industry demands. Additionally, the qualifications are recognised by employers and higher education institutions, providing a solid foundation for further education and career advancement in the construction field. You will develop critical thinking, problem-solving, and technical skills that are crucial for success in the industry.



CONSTRUCTION

## ENTRY

**Construction Pathway Entry**  
Level 3 (SR) 1 year



## LEVEL 1

**Bricklaying**  
Level 1 Diploma (SR) 1 year

**Carpentry**  
Level 1 Diploma (TC) (SR) 1 year

**Construction Skills (Multi Skills)**  
Level 1 Diploma (TC) (SR) 1 year

**Electrical Installations**  
Level 1 Diploma (TC) (LL) 1 year

**Plumbing**  
Level 1 Diploma (TC) (LL) 1 year

## LEVEL 2

**Bricklaying**  
Level 2 Diploma (SR) 1 year

**Carpentry and Joinery (Site Joinery)**  
Level 2 Diploma (TC) (SR) 1 year

**Electrical Installations**  
Level 2 Diploma (TC) (LL) 1 year

**Plumbing**  
Level 2 Diploma (TC) (LL) 1 year

## LEVEL 3

**Electrical Installation (Day Release)**  
Apprenticeship  
Level 3 (WB) (LL) 4 years

**Plumbing & Domestic Heating Technician (Day Release)**  
Apprenticeship  
Level 3 (WB) (LL) 4 years

## HTQ

**Construction Management for England**  
Level 4/5 HTQ (TC) 4 years

For more info on HTQs see page: 111



### Electricians

Salary Range: £23,070 - £49,690

### Bricklayers

Salary Range: £20,110 - £43,320

### Construction and Building Trades

Salary Range: £18,840 - £40,580

### Carpenters and Joiners

Salary Range: £19,330 - £41,630

"I've always liked being hands-on, and the course helped me figure out what I wanted to do. I'm going to progress on the carpentry course at the college, and even though it's a male-dominated field, they don't treat me any differently."

**Brooke Reeves - Multi-Skills Student of the Year 2025**

Entry Level

Construction Pathway Entry Level 3 (SR) 1 year

- Entry Requirements:
- Demonstrate the ability to work at Entry level 3 in maths or English or GCSE grade 1
  - Successful attendance at transition event

Level 1

Bricklaying Level 1 Diploma (SR) 1 year

- Entry Requirements:
- An Entry Level 3 qualification or GCSEs x 2 at grade 2 in maths or English or Level 1 Certificate in Construction Skills
  - Successful attendance at interview

Carpentry Level 1 Diploma (TC) (SR) 1 year

- Entry Requirements:
- An Entry 3 qualification or GCSEs x 2 at grade 2 in maths or English
  - Successful attendance at interview
  - Successful attendance at transition event

Construction Skills (Multi Skills) Level 1 Diploma (TC) (SR) 1 year

- Entry Requirements:
- GCSEs at grade 3 in English and maths, or equivalent
  - An Entry 3 qualification, or equivalent
  - Successful attendance at interview
  - Successful attendance at transition event

Electrical Installations Level 1 Diploma (TC) (LL) 1 year

- Entry Requirements:
- GCSEs x 2 at grade 3 in maths and English
  - Successful attendance at interview and transition event

Plumbing Level 1 Diploma (TC) (LL) 1 year

- Entry Requirements:
- GCSEs x 2 at grade 3 in maths and English
  - Successful attendance at interview

Level 2

Bricklaying Level 2 Diploma (SR) 1 year

- Entry Requirements:
- GCSEs x 2 at grade 3 in maths and English
  - Completion of Bricklaying Level 1 Diploma

Carpentry and Joinery (Site Joinery) Level 2 Diploma (TC) (SR) 1 year

- Entry Requirements:
- GCSEs x 2 at grade 4 in maths and English
  - Completion of the Carpentry Level 1 Diploma
  - Successful attendance at interview

Electrical Installations Level 2 Diploma (TC) (LL) 1 year

- Entry Requirements:
- GCSEs x 2 at grade 4 in maths and English
  - Successful attendance at interview
  - Electrical Installations Level 1 Diploma (TC) (LL) 1 Year

Plumbing Level 2 Diploma (TC) (LL) 1 year

- Entry Requirements:
- Level 1 qualification in Plumbing, plus GCSE grade 4 in English and maths
  - Successful attendance at interview

Level 3

Electrical Installation Apprenticeship (Day Release) Level 3 (WB) 4 years

- Entry Requirements:
- Employed in a trade/industry related to the apprenticeship.
  - You will need to find employment in a related trade/industry before applying for the apprenticeship programme you wish to complete
  - 9/4 grade GCSE or Level 2 functional skills in English and maths

Plumbing & Domestic Heating Technician (Day Release) Apprenticeship Level 3 (WB) (LL) 4 years

- Entry Requirements:
- Employed in a trade/industry related to the apprenticeship.
  - You will need to find employment in a related trade/industry before applying for the apprenticeship programme you wish to complete
  - 9/4 grade GCSE or Level 2 functional skills in English and maths

HTQ (Level 4/5)

Construction Management for England Level 4/5 HTQ (TC) 4 years

- Entry Requirements:
- Level 3 qualification in Construction
  - GCE Advanced Level profile that demonstrates strong performance in a relevant subject or adequate performance in more than one GCE subject. This profile is likely to be supported by GCSE grades at 9 to 4 (or equivalent) in subjects such as maths and English
  - Other related Level 3 qualifications such as T Levels
  - Access to Higher Education Diploma from an approved further education institution
  - Relevant work experience, or
  - An international equivalent to the above qualifications



# EARLY YEARS EDUCATION

Studying Early Years Education in college is a great choice for anyone who enjoys working with children and wants to make a positive impact on their lives.

It offers a solid foundation in understanding how children grow, learn, and develop, while also teaching important skills like communication, patience, and responsibility. Whether you're aiming for a career in education, healthcare, or social services, studying early years opens the door to many rewarding and meaningful opportunities.



## EARLY YEARS EDUCATION

### LEVEL 1

**Childcare**  
Level 1 Certificate  
(SC) 1 year

### LEVEL 2

**Working with Children in Early Years and Primary Settings**  
Level 2 Certificate  
(SC) 1 year

**Early Years Practitioner**  
Level 2 Diploma  
(SC) (TC) 1 year

### T LEVEL

**Education and Early Years**  
T Level (SC) (TC)  
2 years

For more info on T Levels see page: 25

### HTQ

**Early Years Senior Practitioner**  
Level 5 Diploma  
HTQ (Online) 2 years

For more info on HTQs see page: 111

### UCSE

Progress on to a range of Social Care and Childcare based courses at our University Centre South Essex such as Special Educational Needs and Disability Studies BA (Hons) & Early Years Care and Education BA (Hons)

For more info on UCSE see page: 110



#### Social Worker

Salary Range: £26,460 - £57,000

#### Child and Early Years Officers

Salary Range: £18,340 - £39,500

#### Early Years Practitioner

Salary Range: £16,000 - £32,000

#### Nursery Workers

Salary Range: £20,570 - £44,310





Level 1

Childcare Level 1 Certificate (SC) 1 year

- Entry Requirements:
- Two GCSE's at grade 1 in English and maths

Level 2

Working with Children in Early Years and Primary Settings Level 2 Certificate (SC) 1 year

- Entry Requirements:
- Two GCSE's at grade 2 in English and maths
  - An enhanced DBS disclosure
  - Successful attendance at interview event

Early Years Practitioner Level 2 Diploma (SC) (TC) 1 year

- Entry Requirements:
- Two GCSE's at grade 3 in English and maths
  - An enhanced DBS disclosure
  - Successful attendance at interview event

T Level (Level 3)

Education and Early Years T Level (SC) (TC) 2 years

- Entry Requirements:
- Four GCSE's at grade 4 including English and maths

HTQ (Level 5)

Early Years Senior Practitioner Level 5 Diploma HTQ (Online) 2 years

- Entry Requirements:
- Level 3 Early Years Practitioner
  - Maths and English at grade 4 or above
  - Working in the role of leader, deputy or manager in an appropriate setting

UCSE

Special Educational Needs and Disability Studies BA (Hons) (SC) 3 years

- Entry Requirements:
- A minimum of 64 UCAS points from one or more of the following:
- Access to Higher Education Diploma
  - A Levels
  - T Levels
  - Extended Diploma
  - Foundation Diploma in Art and Design (Level 3 or 4)
  - Or equivalent EU/International qualifications, such as International Baccalaureate Diploma
  - GCSE English Language and maths at Grade 4 or above OR a Level 2 equivalent such as Functional Skills

Early Years, Care and Education BA (Hons) (SC) 3 years

- Entry Requirements:
- A minimum of 64 UCAS Points from one or more of the following:
- A Levels
  - T Levels
  - Extended Diploma
  - Foundation Diploma in Art and Design (Level 3 or 4)
  - Or equivalent EU/International qualifications, such as International Baccalaureate Diploma
  - GCSE English Language and maths at Grade 4 or above OR a Level 2 equivalent such as Functional Skills

# ENGINEERING



Studying engineering qualifications offers a strong foundation in both theoretical knowledge and practical skills, making it ideal for those interested in fields such as mechanical, electrical, or civil engineering. These courses emphasize hands-on learning, allowing you to apply concepts in real-world situations and develop problem-solving abilities crucial for engineering roles. This approach not only builds technical expertise but also prepares you to tackle industry challenges effectively.

Additionally, engineering qualifications are highly valued by employers and offer a direct path into the workforce or further education. With the increasing demand for skilled engineers, these courses equip you with the practical skills needed to succeed in various technical roles.

## ENGINEERING

### LEVEL 2

**Engineering**  
Level 2 Diploma (LL) (SR) 1 year

**Marine Engineering**  
Level 2 Diploma (LL) 1 year

**Welding**  
Apprenticeship Level 2 (WB) 18 months

### Mechanical Engineers

Salary Range: £27,600 - £59,450

### Production and Process Engineers

Salary Range: £28,380 - £61,140

### LEVEL 3

**Engineering (Craft)**  
Level 3 Diploma (LL) 1 year

**Marine Engineer**  
Apprenticeship Level 3 (WB) 4 years

**Maintenance and Operations Engineering Technician**  
Apprenticeship Level 3 (WB) 3 years

**Mechatronics Maintenance Technician**  
Apprenticeship Level 3 (LL) 4 years

**Machining Technician**  
Apprenticeship Level 3 (WB) 4 years

**Engineering Fitter**  
Apprenticeship Level 3 (WB) 4 years

### A LEVEL

**A Level Engineering Pathway**  
(Maths & Physics, Further Maths, Computing, Chemistry, Economics, Vocational Engineering) (TC) 2 years

### T LEVEL

**Design, Surveying and Planning**  
T Level (TC) 2 years

**Maintenance, Installation and Repair for Engineering and Manufacturing (Mechatronic Route)**  
T Level (LL) 2 years

### HTQ

**Automation and Control for England**  
Level 4 HTQ (TC) 2 years

**Mechatronics for England**  
Level 4 HTQ (TC) 2 years

For more info on HTQs see page: 111

**Electrical Engineers**  
Salary Range: £34,770 - £74,880

**Engineering Technicians**  
Salary Range: £25,890 - £55,760



## Level 2

### Engineering Level 2 Diploma (LL) (SR) 1 year

**Entry Requirements:**

- GCSEs x 2 at grade 3 in maths and English
- Successful attendance at interview

### Marine Engineering Level 2 Diploma (LL) 1 year

**Entry Requirements:**

- Level 1 qualification or GCSEs x 2 at grade 3 in maths and English

### Welding Apprenticeship Level 2 (WB) 18 months

**Entry Requirements:**

- Employed in a trade/industry related to the apprenticeship.
- You will need to find employment in a related trade/industry before applying for the apprenticeship programme you wish to complete
- Set by the employer but apprentices must demonstrate via initial assessment that they are working at Entry Level 3 in both English and maths unless an Education Health and Care Plan is held

## Level 3

### Engineering (Craft) Level 3 Diploma (LL) 1 year

**Entry Requirements:**

- GCSEs x 4 at grade 4 - one to be grade 4 in English or maths, or
- Engineering Level 2 Diploma plus GCSE maths and English at grade 4 or equivalent
- Successful attendance at interview

### Engineering Fitter Apprenticeship Level 3 (WB) 4 years

### Mechatronics Maintenance Technician Apprenticeship Level 3 (LL) 4 Years

**Entry Requirements:**

- Employed in a trade/industry related to the apprenticeship
- You will need to find employment in a related trade/industry before applying for the apprenticeship programme you wish to complete
- 9-4 grade GCSE in English & maths OR Level 2 functional Skills in English and maths
- Employers may request additional entry criteria

### Marine Engineer Apprenticeship Level 3 (WB) 4 years

**Entry Requirements:**

- Employed in a trade/industry related to the apprenticeship.
- You will need to find employment in a related trade/industry before applying for the apprenticeship programme you wish to complete
- GCSE grade 4 in maths and English or equivalent
- GCSE grade 4 in Science or equivalent (would be advantageous but not essential)

### Maintenance and Operations Engineering Technician Apprenticeship Level 3 (WB) 3 years

**Entry Requirements:**

- Employed in a trade/industry related to the apprenticeship
- Age restrictions: 16+
- GCSE maths grade 4 or Functional Skill in maths Level 2
- GCSE English Language grade 4 or Functional Skill in English Level 2
- Working in a job role such as Electrical Technicians; Mechanical Technicians; Control & Instrumentation Technicians; Wind Turbine Technicians Electrical System and Process Control Technicians; Electromechanical Technicians and Plant Operations Technicians

### Machining Technician Apprenticeship Level 3 (WB) 4 years

**Entry Requirements:**

- Employed in a trade/industry related to the apprenticeship
- Age restrictions: 16+
- GCSE maths grade 4 or Functional Skill in maths Level 2
- GCSE English Language grade 4 or Functional Skill in English Level 2
- Working in a job role such as a Machinist

## A Level (Level 3)

### A Level Engineering Pathway (Maths & Physics, Further Maths, Computing, Chemistry, Economics, Vocational Engineering) (TC) 2 years

**Entry Requirements:**

- 5 GCSEs at grade 5 or above, including maths and English Language

## T Level (Level 3)

### Maintenance, Installation and Repair for Engineering and Manufacturing (Mechatronic Route) T Level (LL) 2 years

**Entry Requirements:**

- Level 2 Qualification, or Transition Qualification or four GCSEs at grade 4, including English and maths Grade 5

### Design, Surveying and Planning T Level (TC) 2 years

**Entry Requirements:**

- Minimum of grade 5 and above in maths and GCSEs in maths and science grade 4 and above

## HTQ (Level 4)

### Mechatronics for England Level 4 HTQ (TC) 2 years

**Entry Requirements:**

- You will need a minimum of 64 UCAS points from one or more of the following:
- Level 3 Engineering
  - T Level Engineering and Manufacturing
  - AVCE/GNVQ in a related vocational area (Level 3)
  - A Levels in maths and science subjects
  - A related Access to Higher Education Certificate or other related Level 3 qualifications
  - Related work experience supported by GCSEs at grades 9-5 or equivalent
  - You will also need GCSE English and GCSE maths at grade 5 or above OR a Level 2 equivalent such as functional skills

### Automation and Control for England Level 4 HTQ (TC) 2 years

**Entry Requirements:**

- You will need a minimum of 64 UCAS points from one or more of the following:
- Level 3 Engineering
  - T Level Engineering and Manufacturing
  - AVCE/GNVQ in a related vocational area (Level 3)
  - A Levels in maths and science subjects
  - A related Access to Higher Education Certificate or other related Level 3 qualifications
  - Related work experience supported by GCSEs at grades 9-5 or equivalent
  - You will also need GCSE English and GCSE maths at grade 5 or above OR a Level 2 equivalent such as functional skills





# ESOL

## ENGLISH FOR SPEAKERS OF OTHER LANGUAGES (ESOL)

Aimed at EU and overseas citizens living in the UK whose first language is not English, this course is designed to help you improve your English for work, career development, and everyday life. You will build key skills in speaking, writing, and communication. The course also includes employability training, opportunities for work experience, and clear pathways to progress onto other courses or further study.

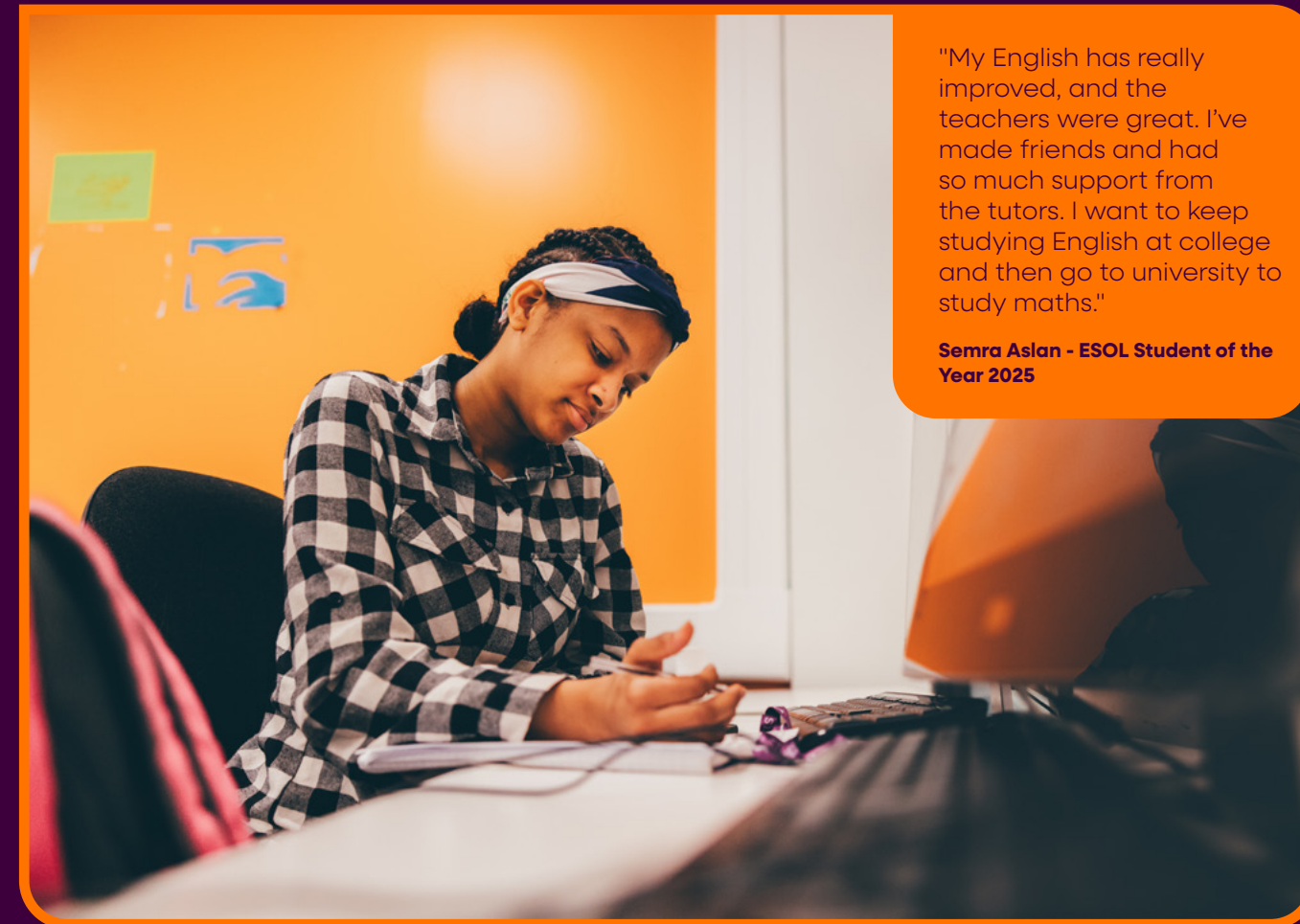
### ESOL

#### Multiple levels available

Basildon Town Centre | Southend City Campus | Thurrock Campus - 1 year

#### ENTRY REQUIREMENTS:

- There are no entry requirements, though you will need to attend an interview and initial assessment with an ESOL teacher



"My English has really improved, and the teachers were great. I've made friends and had so much support from the tutors. I want to keep studying English at college and then go to university to study maths."

**Semra Aslan - ESOL Student of the Year 2025**



# FOUNDATION & SUPPORTED LEARNING >>



## PATHWAYS TO INDEPENDENCE

On our pathways programme, young people will have the opportunity to develop their independent living skills to prepare for Adulthood, whilst studying maths and English at an appropriate level. The programme is designed for young people who will benefit from learning in a supported environment.

### EXAMPLES OF TOPICS COVERED:

- Healthy lifestyles
- Career planning
- Team work
- Employability
- Accessing the local community
- Maths
- English

This course covers many transferable skills which will allow for potential progression into a range of areas including further study at the college, employment or Supported Internship.

## SUPPORTED INTERSHIPS

Interns work for an employer for a minimum of six months to learn the role and tackle the tasks needed to become suitable for paid employment. Each intern will receive on-site training from a professional job coach who will support the intern to learn the skills required for that workplace or task and encourage them to become involved in support systems such as co-workers.

Support will then be gradually faded as and when the intern achieves independence in the workplace. This is known as the learn, train and fade model.

In college learners will develop employability skills, maths and English.

### THE INTERN WILL:

- ✓ Gain invaluable experience and learn new skills in the work place
- ✓ Further develop their English and maths skills
- ✓ Improve their chance of gaining paid employment

## PATHWAYS TO INDEPENDENCE

### Entry Level 3 - Level 2

Basildon Town Centre | Southend City Campus |  
Thurrock Campus - 1 year

### ENTRY REQUIREMENTS

- There are no formal qualifications required for this programme, It is designed for young people with recognised learning difficulties and or disabilities
- 19+ learners will require an Educational Health and Care Plan (EHCP)
- Successful attendance at interview

## SUPPORTED INTERSHIPS

### Multiple Levels

Basildon Town Centre | Southend City Campus |  
Thurrock Campus - 1 year

### ENTRY REQUIREMENTS:

- Applicants will need to have an EHCP to be considered for this programme
- Please contact [supportedinternship@southessex.ac.uk](mailto:supportedinternship@southessex.ac.uk)



# HAIR & BEAUTY



Studying hair and beauty qualifications provides practical skills in hairstyling, makeup, and skincare, preparing you for a career in the beauty industry.

These courses combine creative techniques with industry knowledge, allowing you to work with real clients and build a strong portfolio. With a focus on hands-on learning and professional standards, they offer a direct path to roles in salons, spas, or freelance work in the beauty field.

Additionally, these qualifications can open doors to advanced training opportunities and specialisations, helping you stay competitive in the ever-evolving beauty industry.



## HAIR AND BEAUTY

### LEVEL 1

**Introduction to the Hair and Beauty Sector (Hair Pathway)**  
Level 1 Certificate  
(SC) 1 year

**Introduction to the Hair and Beauty Sector (Beauty Pathway)**  
Level 1 Certificate  
(SC) (TC) 1 year

### LEVEL 2

**Women's Hairdressing**  
Level 2 Certificate  
(SC) (TC) 1 year

**Hair and Media Makeup Studies**  
Level 2 Diploma  
(SC) 1 year

**Beauty Specialist Techniques**  
Level 2 Certificate  
(SC) (TC) 1 year

### LEVEL 3

**Hairdressing**  
Level 3 Diploma  
(SC) (TC) 1 year

**Beauty Therapy Studies**  
Level 3 Diploma  
(SC) (TC) 1 year

**Fashion, Theatre and Media Hair and Makeup**  
Level 3 Diploma  
(SC) (TC) 1 year

### LEVEL 4

**Salon Management**  
Level 4 Diploma  
(SC) (TC) 1 year

### UCSE

Progress on to a range of Hair & Beauty based courses at our University Centre South Essex such as Hair and Makeup Design and Application for Production FdA. A top-up year is also available to make this a BA (Hons) award

For more info on UCSE see page: 110



"I've loved every step of the journey. Level 2 was amazing. I went on trips and came 3rd in an inter-college skills competition. Now I'm working in a London salon and I'm enrolled onto the Level 4 next year to keep growing my skills."

**Remi Martin - Beauty Student of the Year 2025**

#### Beauticians

Salary Range: £14,270 - £24,730

#### Salon Managers

Salary Range: £20,900 - £45,010

#### Hairdressers and Barbers

Salary Range: £14,690 - £25,470

#### Nail Technician

Salary Range: £19,000 - £23,000



## Level 1

### Introduction to the Hair and Beauty Sector (Hair Pathway) Level 1 Certificate (SC) 1 year or

### Introduction to the Hair and Beauty Sector (Beauty Pathway) Level 1 Certificate (SC) (TC) 1 year

#### Entry Requirements:

- Four GCSEs at grade 2 including maths and English plus two other subjects
- Successful attendance at interview event
- Successful attendance at transition event
- You will be required to purchase salon wear, equipment kit, textbooks and consumables at enrolment

## Level 2

### Women's Hairdressing Level 2 Certificate (SC) (TC) 1 year

#### Entry Requirements:

- Level 1 qualification or GCSEs x 2 at grade 3 in maths and English
- Successful attendance at interview event
- Please be aware that you will be required to purchase salon wear, equipment kit, textbooks and consumables at enrolment

### Hair and Media Makeup Studies Level 2 Diploma (SC) 1 year

#### Entry Requirements:

- Level 1 qualification or GCSEs x 2 at grade 3 in maths and English
- Successful attendance at interview event
- You will be required to purchase salon wear, equipment kit, textbooks and consumables at enrolment

Please note you will need to:

- Provide hair equipment and make up kit
- Maintain correct uniform standards
- Make a one-off payment for yearly consumables
- Keep a working portfolio

### Beauty Specialist Techniques Level 2 Diploma (SC) (TC) 1 year

#### Entry Requirements:

- Level 1 qualification or GCSEs x 2 at grade 3 in maths and English
- Successful attendance at interview event
- Please be aware that you will be required to purchase salon wear, equipment kit, textbooks and consumables at enrolment

## Level 3

### Hairdressing Level 3 Diploma (SC) (TC) 1 year

#### Entry Requirements:

- Level 2 qualification in Hairdressing or similar, plus GCSE grade 4 in English and maths
- Successful attendance at interview event
- You will be required to purchase salon wear, equipment kit, textbooks and consumables

### Beauty Therapy Studies Level 3 Diploma (SC) (TC) 1 year

#### Entry Requirements:

- Beauty Specialist Techniques Level 2 Diploma plus maths and English at grade 4, or equivalent
- Successful attendance at interview event
- You will be required to purchase salon wear, equipment kit, textbooks and consumables

### Fashion, Theatre and Media Hair and Makeup Level 3 Diploma (SC) (TC) 1 year

#### Entry Requirements:

- Level 2 qualification in Hair and Media Make-up or similar, plus GCSE grade 4 in English and maths
- Successful attendance at interview event
- You will be required to purchase salon wear, equipment kit, textbooks and consumables at enrolment

## Level 4

### Salon Management Level 4 Diploma (SC) (TC) 1 year

*(To include additional practical units as a pathway to L4, L5, L7 Advanced Aesthetics)*

#### Entry Requirements:

- Level 3 in Beauty Therapy
- Grade 4 in English and Maths GCSE
- Successful attendance and interview
- Present a high standard of professionalism and delivery of high-quality treatments

## UCSE

### Hair and Makeup Design and Application for Production FdA (HH) 2 years Validated by the University of the Arts London (UAL)

#### Entry Requirements:

A minimum of 64 UCAS points from one or more of the following:

- Access to Higher Education Diploma
- A Levels
- T Levels
- Extended Diploma
- Related Foundation Diploma (Level 3 or 4)
- Or equivalent EU/International qualifications, such as International Baccalaureate Diploma
- And English GCSE passes at grade 4 or above
- You will also be required to attend an interview and portfolio review

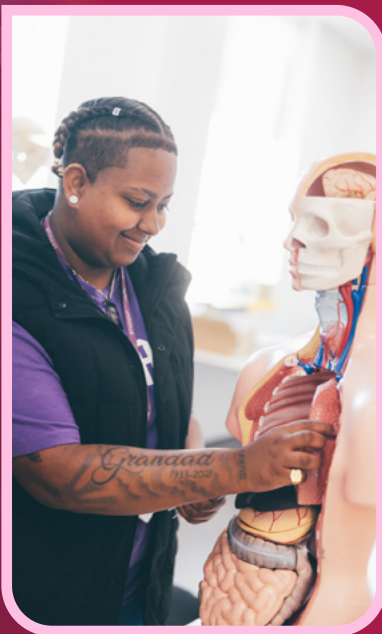
### Hair and Makeup Design and Application for Production BA (Hons) Top Up (HH) 1 year

#### Entry Requirements:

- 240 credits (120 at Level 4 and 120 at Level 5) achieved through a Performing Arts qualification
- IELTS (Academic) 6



# HEALTH



Studying health qualifications equips you with the knowledge and skills needed to support individuals in medical and care settings.

These courses focus on practical experience in areas like healthcare practices, patient support, and medical ethics, preparing you for rewarding roles in hospitals, clinics, and care facilities. By gaining hands-on experience and understanding professional standards, you will be well-prepared to make a positive impact in people's lives.

## HEALTH

**LEVEL 1**  
**Health and Care**  
Level 1 Certificate  
**(SC)** 1 year

**LEVEL 2**  
**Health**  
Foundation T level  
**(SC) (TC)** 1 year

**T LEVEL**  
**Health**  
T Level **(SC) (TC)**  
2 years  
  
For more info on T Levels see page: 25

**HTQ**  
**Healthcare Professions Support for England**  
Level 5 HTQ **(SC) (TC)** 2 years  
  
For more info on HTQs see page: 111

"The tutors were excellent; they were truly encouraging. I am progressing to Level 3 at college, and I'm motivated to become a Mental Health Nurse. The learning experience and environment truly empowered me."

**Aaliyah Muili - Health & Social Care Student of the Year 2025**



**Care Workers**  
Salary Range: £15,220 - £32,770

**Midwifery Nurses**  
Salary Range: £26,920 - £57,990

**Nursing Professionals**  
Salary Range: £24,670 - £53,140

**Nursing Auxiliaries and Assistants**  
Salary Range: £16,330 - £35,180





## Level 1

### Health and Care Level 1 Certificate (SC) 1 year

#### Entry Requirements:

- Four GCSEs at grade 2 including maths and English plus two other subjects

## T Level (Level 2)

### Health Foundation T level (SC) (TC) 1 year

#### Entry Requirements:

- Grade 3 in GCSE maths, 3 in GCSE English and 2 in GCSE science (Preferably Science CORE)
- A introduction assessment to be undertaken at enrolment to assess suitability for the course
- Preferably some knowledge and skills of the Health and Social Care sector
- Clean DBS (DBS to be done in-house at the college when learners start)

Please be aware that you will be required to purchase salon wear, equipment kit, textbooks and consumables at enrolment

## T Level (Level 3)

### Health T Level (SC) 2 years

#### Entry Requirements:

- Level 2 qualification at merit grade or higher or
- Transition qualification or
- Four GCSEs at grade 4, including English, maths and science

## HTQ (Level 5)

### Healthcare Professions Support for England Level 5 HTQ (SC) (TC) 2 years

#### Entry Requirements:

- Level 3 qualification in Health and Social Care (or related subject)
- A GCE Advanced Level profile that demonstrates strong performance in a relevant subject or adequate performance in more than one GCE subject. This profile is likely to be supported by GCSE grades 9 to 4 (or equivalent) in subjects such as maths and English
- Other related Level 3 qualifications
- An Access to Higher Education Diploma awarded by an approved further education institution
- Related work experience
- An international equivalent of the above



# INFORMATION TECHNOLOGY



Studying digital qualifications provides practical, hands-on experience in the rapidly expanding tech industry, covering areas like software development, cybersecurity, and digital marketing. This approach focuses on real-world applications, allowing you to develop valuable skills through project-based learning, enhancing career prospects or further studies.

These courses are highly valued by employers and offer a flexible path to entering the workforce or higher education. With digital skills in demand across industries, these qualifications make you more adaptable and competitive in today's tech-driven economy.

## INFORMATION TECHNOLOGY

### LEVEL 2

**Digital Transition Programme Diploma in Digital and IT Skills**  
Level 2 T Level (BTC)  
1 year

### LEVEL 3

**AAQ Information Technology**  
Level 3 BTEC (BTC)  
1 year

### HTQ

**Digital Technologies (Data Analytics)**  
Level 5 HTQ (BTC)  
2 years

**Digital Technologies (Cybersecurity)**  
Level 5 HTQ (BTC)  
2 years

**Computing for England (Network Engineering)**  
Level 5 HTQ (BTC)  
2 years

For more info on HTQs see page: 111

### T LEVEL

**Digital Business Service**  
T Level (BTC)  
2 years

**Digital Support Services**  
T Level (BTC)  
2 years

**Digital Production**  
T Level (BTC)  
2 years

For more info on T Levels see page: 25

“The course gives you hands-on experience with emerging technologies you don’t often get to study. The tutors are very knowledgeable, offering practical insights and a global view of how technology is applied. It prepares you well for the industry, especially if, like me, you want to build a career in cybersecurity.”

**Joseph Whall - IT Student of the Year 2025**

#### Programmers

Salary Range:  
£32,130 - £69,200

#### Data Analysts

Salary Range:  
£21,560 - £46,440

#### IT Operations Technicians

Salary Range: £20,240 - £43,600

#### IT Managers

Salary Range: £33,070 - £71,230



## T Level (Level 2)

**Digital Transition Programme Diploma in Digital and IT Skills Level 2 T Level (BTC) 1 year**

- Entry Requirements:**
- Level 1 qualification at merit grade or higher
  - Four GCSEs at Grade 3, including English and maths

## Level 3

**Digital Data Analytics T Level (BTC) 2 years**  
**Digital Support and Security T Level (BTC) 2 years**  
**Digital Software Development T Level (BTC) 2 years**

- Entry Requirements:**
- Level 2 qualification at merit grade or higher or
  - Transition qualification or
  - Four GCSEs at Grade 4, including English and maths

**AAQ Information Technology Level 3 BTEC (BTC) 1 year**

- Entry Requirements:**
- Level 2 qualification at merit grade or higher or
  - Transition qualification or
  - Four GCSEs at Grade 4, including English or maths

## HTQ (Level 5)

**Digital Technologies (Data Analytics) Level 5 HTQ (BTC) 2 years**

- Entry Requirements:**
- Level 3 qualification in Computing, Business or Creative Digital Media Production
  - GCE Advanced Level profile that demonstrates strong performance in a relevant subject or adequate performance in more than one GCE subject. This profile is likely to be supported by GCSE grades at 9 to 4 (or equivalent) in subjects such as maths and English
  - other related Level 3 qualifications
  - Access to Higher Education Diploma from an approved further education institution
  - relevant work experience
  - or an international equivalent to the above qualifications

**Digital Technologies (Cybersecurity) Level 5 HTQ (BTC) 2 years**

**Computing for England (Network Engineering) Level 5 HTQ (BTC) 2 years**

- Entry Requirements:**
- a Level 3 qualification in Computing
  - a GCE Advanced Level profile that demonstrates strong performance in a relevant subject or adequate performance in more than one GCE subject. This profile is likely to be supported by GCSE grades at 9 to 4 (or equivalent) in subjects such as maths and English
  - other related Level 3 qualifications
  - an Access to Higher Education Diploma from an approved further education institution
  - relevant work experience, or
  - an international equivalent to the above qualifications







# MEDIA

Studying media qualifications offers a hands-on insight into the fast-paced world of film, television, and digital content creation. These courses provide practical experience in video production, editing, and storytelling, helping you develop creative skills using industry-standard tools and technologies. This blend of technical know-how and creative expression builds a strong portfolio that showcases your abilities and boosts your employability.

Highly relevant in today's digital landscape, media courses prepare you for careers in broadcasting, digital marketing, or film production, offering the versatility to work across various platforms and industries.



## MEDIA

### LEVEL 1

**Digital Technologies (Media Pathway)**  
Level 1 Diploma (SC)  
1 year

### LEVEL 2

**Digital Technologies (Media Pathway)**  
Level 2 Diploma (SC)  
1 year

### LEVEL 3

**Creative Media Production (Print Media and Communications)**  
Level 3 Extended Diploma (SC) 2 years  
**Creative Media Production (Television and Film Production)**  
Level 3 Extended Diploma (SC) 2 years  
**Interactive Digital Media**  
Level 3 Extended Diploma (SC) 2 years

### UCSE

Progress on to a range of Media based courses at our University Centre South Essex such as Film & Television Production BA (Hons) & Creative Media & Promotion BA (Hons)

For more info on UCSE see page: 110

### T LEVEL

**Media, Broadcast and Production**  
T Level (SC) 2 years  
For more info on T Levels see page: 25

#### Media Researcher

Salary Range: £16,000 - £40,000

#### Broadcast Engineer

Salary Range: £20,00 - £50,000

#### Video Editor

Salary Range: £18,000 - £45,000

"I loved teaming up with creative, like-minded people and amazing tutors. I made friends for life. The course has brilliant equipment you won't find elsewhere."

**Lennon Howard - Creative Media Student of the Year 2025**

Level 1

Digital Technologies (Media Pathway) Level 1 Diploma (SC) 1 year

- Entry Requirements:
- Two GCSEs at grade 2 including maths or English, or an Entry 3 qualification, or equivalent
  - Successful attendance at interview
  - Successful attendance at transition event
  - You will be asked to provide evidence of your ability in the subject which could be in the form of a portfolio

Level 2

Digital Technologies (Media Pathway) Level 2 Diploma (SC) 1 year

- Entry Requirements:
- Level 1 qualification or GCSEs x 2 at grade 3 in maths or English
  - Successful attendance at interview event
  - You will be asked to provide evidence of your ability in the subject which could be in the form of a portfolio

Level 3

Creative Media Production (Print Media and Communications) Level 3 Extended Diploma (SC) 2 years

- Entry Requirements:
- Level 2 qualification or GCSEs x 4 at grade 4 - one to be grade 4 in English or maths dependent on vocational subject to be studied
  - You will be asked to provide evidence of your ability in the subject which could be in the form of a portfolio
  - Successful attendance at interview event

Creative Media Production (Television and Film Production) Level 3 Extended Diploma (SC) 2 years

- Entry Requirements:
- Level 2 qualification or GCSEs x 4 at grade 4 - one to be grade 4 in English or maths dependent on vocational subject to be studied
  - You will be asked to provide evidence of your ability in the subject which could be in the form of a portfolio
  - Successful attendance at interview event

Interactive Digital Media Level 3 Extended Diploma (SC) 2 years

- Entry Requirements:
- Working knowledge of all social media platforms
  - Working knowledge of Adobe software
  - Level 2 qualification or GCSEs x 4 at grade 4 - two to be grade 4 in English and maths
  - You will be asked to provide evidence of your ability in the subject which could be in the form of a portfolio
  - Successful attendance at interview

T Level (Level 3)

Media, Broadcast and Production T Level (SC) 2 years

- Entry Requirements:
- Level 2 qualification or GCSEs x 4 at grade 4 - one to be grade 4 in English or maths
  - You will be asked to provide evidence of your ability in the subject which could be in the form of a portfolio
  - Successful attendance at interview event

UCSE

Film & Television Production BA (Hons) (SC) 3 years

- Entry Requirements:
- You will need a minimum of 64 UCAS points from one or more of the following:
- A Levels
  - T Levels
  - Extended Diploma
  - Foundation Diploma in Art and Design (Level 3 or 4)
  - Or equivalent EU/International qualifications, such as International Baccalaureate Diploma
  - And English GCSE passes at grade 4 or above
- This list is not exhaustive, other qualifications may be considered. Entry to this course will also be determined by the quality of your application, looking primarily at your portfolio/showreel of work, personal statement and reference.

Creative Media & Promotion BA (Hons) (SC) 3 years

- Entry Requirements:
- You will need a minimum of 64 UCAS points from one or more of the following:
- A Levels, preferably in a creative or media subject
  - Level 3 Diploma with a minimum of pass profile
  - Access to Higher Education Diploma Level 3 (minimum 15 credits at merit or above)
  - Higher National Diploma (for possible direct entry on to year two)
  - Foundation Diploma in Art and Design Level 4
  - Other qualifications will be considered on an individual basis. You will also need GCSE English at Grade 4 or above OR a Level 2 equivalent such as functional skills qualification

# MOTOR VEHICLE

Studying motor vehicle qualifications provides practical skills and in-depth knowledge of vehicle maintenance, repair, and diagnostics. These courses focus on hands-on experience with engines, electrical systems, and modern automotive technologies, allowing you to gain the expertise needed to work in garages, dealerships, or even start your own business. This real-world training ensures that you will be well-prepared for the challenges of the automotive industry.

With the growing demand for skilled technicians and advancements in vehicle technology, these qualifications provide essential skills for a successful career in the evolving automotive industry.



## MOTOR VEHICLE

### ENTRY

#### Motor Vehicle Pathway

Entry Level 3 Certificate **(SR)**  
1 year

### LEVEL 1

#### Motor Vehicle Automotive Maintenance

Level 1 Diploma **(SR)**  
1 year

### LEVEL 2

#### Motor Vehicle Maintenance and Repair

Level 2 Certificate **(SR)**  
1 year

### LEVEL 3

#### Motor Vehicle Maintenance and Repair

Level 3 Diploma **(SR)**  
1 year

#### Motor Vehicle Services and Maintenance Technician (Light Vehicle)

Apprenticeship  
Level 3 **(WB)**  
36 months

#### Vehicle And Parts Salespersons And Advisers

Salary Range: 17,350 - £37,380

#### Vehicle Technicians, Mechanics and Electricians

Salary Range: £20,770 - £44,740

#### Assemblers

Salary Range: £21,670 - £46,670

#### Garage Managers

Salary Range: £24,970 - £53,770



## Entry

### Motor Vehicle Pathway Entry Level 3 Certificate (SR) 1 year

#### Entry Requirements:

- Demonstrate the ability to work at Entry level 3 in maths or English or GCSE grade 1
- Successful attendance at interview
- Successful attendance at transition event

## Level 1

### Motor Vehicle Automotive Maintenance Level 1 Diploma (SR) 1 year

#### Entry Requirements:

- Two GCSEs at grade 2 including maths and English, or
- An Entry 3 qualification, or equivalent
- Successful attendance at interview
- Successful attendance at transition event

## Level 2

### Motor Vehicle Maintenance and Repair Level 2 Certificate (SR) 1 year

#### Entry Requirements:

- Level 1 qualification or GCSEs x 2 at grade 3 in maths or English
- Successful attendance at interview

## Level 3

### Motor Vehicle Maintenance and Repair Level 3 Diploma (SR) 1 year

#### Entry Requirements:

- Level 2 qualification in Motor Vehicle or similar, plus GCSE grade 4 in English or maths
- Successful attendance at interview event

### Motor Vehicle Services and Maintenance Technician (Light Vehicle) Apprenticeship Level 3 (WB) 36 months

#### Entry Requirements:

- Employed in a trade/industry related to the apprenticeship.
- You will need to find employment in a related trade/industry before applying for the apprenticeship programme you wish to complete
- 9/4 grade GCSE or Level 2 functional skills in English and maths





# MUSIC



Studying music qualifications helps develop both performance and theory skills across various genres. These courses offer hands-on experience in composition, recording, and live performance, encouraging creativity and helping you build a strong portfolio. Working on practical projects and collaborating with others also provides valuable industry experience.

Music qualifications open doors to careers in areas like production, teaching, and performing. With a focus on technical ability and creative expression, they prepare you for roles in studios, theatres, freelance work, or further study in music.

## MUSIC

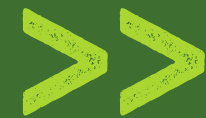
**LEVEL 1**  
**Music, Performance and Production**  
Level 1 Diploma (TC)  
1 year

**LEVEL 2**  
**Music, Performance and Production**  
Level 2 Diploma (TC)  
1 year

**LEVEL 3**  
**Music Performance**  
Level 3 Extended Diploma (TC)  
2 years  
**Music Production**  
Level 3 Extended Diploma (TC)  
2 years

**Studio Sound Engineer**  
Salary Range: £17,000 - £40,000

**Music Therapist**  
Salary Range: £39,000 - £55,000



**Live Sound Engineer**  
Salary Range: £25,000 - £40,000

**Musician**  
Salary Range: £29,090 - £62,650



“Music has been my passion since I was young - I used to sing all the time and knew I wanted to keep going with it. The teachers have been amazing, showing me things about music I never knew. I even joined a band for the first time through college and loved it. I'm heading to university and want to become a music teacher. If you're passionate about music, you should follow it - you've got inspiring tutors and students here who really bring that passion to life.”

**Tianna Gumbo - Music Student of the Year 2025**



## Level 1

### Music, Performance and Production Level 1 Diploma (TC) 1 year

#### Entry Requirements:

- Two GCSEs at grade 2 including maths or English, or
- An Entry 3 qualification, or equivalent
- Successful attendance at interview
- Successful attendance at transition event

## Level 2

### Music, Performance and Production Level 2 Diploma (TC) 1 year

#### Entry Requirements:

- Level 1 qualification or GCSEs x 2 at grade 3 in maths or English
- You will be required to evidence your ability in the subject in the form of an audition
- Successful attendance at interview event

## Level 3

### Music Performance Level 3 Extended Diploma (TC) 2 years

#### Entry Requirements:

- Level 2 qualification or GCSEs x 4 at grade 4 - one to be grade 4 in English or maths dependent on vocational subject to be studied
- A relevant performing arts qualification is desirable, but not essential
- Successful attendance at interview event

### Music Production Level 3 Extended Diploma (TC) 2 years

#### Entry Requirements:

- Level 2 qualification or GCSEs x 4 at grade 4 - one to be grade 4 in English or maths dependent on vocational subject to be studied
- A relevant performing arts qualification is desirable, but not essential
- Successful attendance at interview event







# PERFORMING ARTS

Studying performing arts qualifications provides a dynamic blend of practical experience and creative exploration in areas such as acting, dance, and music. These courses offer hands-on opportunities to develop performance skills, work on live projects, and collaborate with fellow artists, helping students build a versatile portfolio. By immersing yourself in various aspects of the performing arts, you will gain the confidence and expertise essential for careers in theatre, film, and entertainment.

Many programmes also include workshops with industry professionals and opportunities to perform publicly, offering real-world insight and helping you prepare for further study or employment in the creative sector.



## PERFORMING ARTS

### LEVEL 2

#### Performing and Production Arts (Acting)

Level 2 Diploma (SC) 1 year

#### Performing and Production Arts (Live Events and Theatre Production)

Level 2 Diploma (TC) 1 year

### LEVEL 3

#### Performing and Production Arts (Musical Theatre)

Level 3 Extended Diploma (SC) 2 years

#### Performing and Production Arts (Dance)

Level 3 Extended Diploma (SC) 2 years

#### Performing Arts (Acting)

Level 3 Extended Diploma (SC) 2 years

#### Performing and Production Arts (Live Events and Theatre Production)

Level 3 Extended Diploma (TC) 2 years



### UCSE

Progress on to a range of Performing Art based courses at our University Centre South Essex such as Performing Arts (Acting Pathway) (HND) & Performing Arts (Dance Pathway) (HND) & Performing Arts BA (Hons) Top Up

For more info on UCSE see page: 110

#### Dancer and Choreographer

Salary Range: £21,390 - £46,080

#### Actors, Entertainers and Presenters

Salary Range: £15,530 - £33,440

"I really enjoyed the course – the tutors were funny, supportive, and helped me explore both acting and directing. The environment is welcoming and diverse, with lots of opportunities to try different things. I'm now progressing to UCSE to study Performing Arts, and this course gave me the confidence to take that next step."

**Jenna-Ann Dewey - Performing Arts Student of the Year 2025**



## Level 2

**Performing and Production Arts (Acting) Level 2 Diploma (SC) 1 year**

**Performing and Production Arts (Live Events and Theatre Production) Level 2 Diploma (TC) 1 year**

**Entry Requirements:**

- Level 1 qualification or GCSEs x 2 at grade 3 in maths or English
- A relevant performing arts qualification is desirable, but not essential
- Successful attendance at interview event

## Level 3

**Performing and Production Arts (Musical Theatre) Level 3 Extended Diploma (SC) 2 years**

**Performing and Production Arts (Dance) Level 3 Extended Diploma (SC) 2 years**

**Performing Arts (Acting) Level 3 Extended Diploma (SC) 2 years**

**Performing and Production Arts (Live Events and Theatre Production) Level 3 Extended Diploma (TC) 2 years**

**Entry Requirements:**

- Level 2 qualification or GCSEs x 4 at grade 4 - one to be grade 4 in English or maths dependent on vocational subject to be studied
- A relevant performing arts qualification is desirable, but not essential
- Successful attendance at interview event

## UCSE

**Performing Arts (Acting Pathway) (HND) (SC) 2 years**

**Performing Arts (Dance Pathway) (HND) (SC) (TC) 2 years**

**Entry Requirements:**

You will need a minimum of 64 UCAS points from one or more of the following:

- Access to Higher Education Diploma
- A Levels
- T Levels
- Extended Diploma
- Foundation Diploma in Art and Design (Level 3 or 4)
- Or equivalent EU/International qualifications, such as International Baccalaureate Diploma
- And English GCSE passes at grade 4 or above

This list is not exhaustive, other qualifications may be considered. Entry to this course will also be determined by the quality of your application, looking primarily at your portfolio/showreel of work, personal statement and reference.

**Performing Arts BA (Hons) Top Up (SC) (TC) 1 year**

**Entry Requirements:**

This course is a top up year for the HND Acting or Dance Pathways listed above.

240 credits (120 at Level 4 and 120 at Level 5) achieved through a Performing Arts qualification

- IELTS (Academic) 6
- IELTS 6.0 – minimum 5.5 across all components (Academic) 6

This list is not exhaustive, other qualifications may be considered. Entry to this course will also be determined by the quality of your application, looking primarily at an audition set by the course team, personal statement and reference.





# PUBLIC SERVICES

Studying public services qualifications provides a comprehensive understanding of essential roles in sectors such as law enforcement, emergency services, and community support. These courses offer practical training in areas like leadership, crisis management, and public safety, helping you develop the skills needed to handle real-world challenges effectively. Through hands-on experience and simulations, you will learn to respond to emergencies, manage teams, and contribute positively to their communities.

Additionally, qualifications in public services open doors to a range of career paths, from working in police forces and fire departments to roles in social work and emergency management. By gaining expertise in these critical areas, you will be well-prepared to make a meaningful impact and pursue a fulfilling career dedicated to serving and protecting the public.

## PUBLIC SERVICES

### LEVEL 1

**Entry to the Uniformed Services**

NCFE Level 1 Diploma **(SC)** 1 year

### LEVEL 2

**Public Services (SC)** 1 year

### LEVEL 3

**Entry to the Uniformed Public Services**

Level 3 Diploma **(SC)** 2 years

**Entry to the Uniformed Public Services (Policing Pathway)**

Level 3 Diploma **(SC)** 2 years

### LEVEL 4

**Public Services (Policing)**  
Level 4 (HNC) **(SC)**  
1 year

### Fire Service Officers

Salary Range: £25,660 - £55,270

### Police Officer

Salary Range: £29,140 - £62,760

### Prison Service Officers

Salary Range: £19,690 - £42,410

### Officers in Armed Forces

Salary Range: £38,920 - £83,830

"I've always wanted to serve and help people. This course has been such a big part of that journey. The trips were brilliant, and the tutors went above and beyond - truly amazing. It's helped me so much, and now I'm ready to follow my dream of joining the police force."

**Matthew Richards - Public Services Student of the Year 2025**





## Level 1

### Entry to the Uniformed Services NCFE Level 1 Diploma (SC) 1 year

- Entry Requirements:**
- Two GCSEs at grade 2 including maths or English, or
  - An Entry 3 qualification, or equivalent
  - Successful attendance at interview
  - Successful attendance at transition event

## Level 2

### Public Services Level 2 Diploma (SC) 1 year

- Entry Requirements:**
- Level 1 qualification or GCSEs x 2 at grade 3 in maths or English
  - Successful attendance at interview event

## Level 3

### Entry to the Uniformed Public Services Level 3 Diploma (SC) 2 years

- Entry Requirements:**
- 4 x GCSEs at grade 4, one of which must be English or maths
  - Successful attendance at interview event

### Entry to the Uniformed Public Services Level 3 Diploma (Policing Pathway) (SC) 2 years

- Entry Requirements:**
- 4 x GCSEs at grade 4, one of which must be English or maths
  - Successful attendance at interview event

## Level 4

### Public Services (Policing) Level 4 (HNC) (SC) 1 year

- Entry Requirements:**
- Level 3 Diploma (Preferably Public Service related e.g. Public Services, Policing, Criminology)
  - Ability to work to a GCSE/Level 2 standard in maths and English





# SCIENCE



Studying science qualifications provides a solid foundation in key scientific principles and practical laboratory techniques across various disciplines such as biology, chemistry, and physics.

These courses emphasize hands-on experiments and data analysis, allowing you to apply theoretical knowledge in real-world contexts and develop critical thinking skills. With a focus on both scientific inquiry and practical skills, you will be well-prepared for further education or careers in research, healthcare, and environmental science. This thorough preparation helps you stand out in a range of scientific and technical fields.

## SCIENCE

### LEVEL 1

**Applied Science**  
Level 1 Diploma **(SC)**  
1 year

### LEVEL 2

**Applied Science with Technology**  
Level 2 Certificate **(SC)** 1 year

### LEVEL 3

**Applied Science**  
Level 3 Alternative Academic Qualification **(SC)**  
1 year

### Forensics and Criminal Investigation

Level 3 Extended Diploma **(SC)**  
2 years

### A LEVEL

**Medical Pathway**  
A Levels **(TC)**  
2 years

For more info on A Levels see page: 24

### UCSE

Progress on at our University Centre South Essex with a degree in Criminology & Forensic Investigation

For more info on UCSE see page: 110

### Microbiologist

Salary Range: £23,000 - £45,000

### Clinical Scientist

Salary Range: £48,000 - £63,000

### Biochemist

Salary Range: £29,120 - £62,720

### Biological Scientists

Salary Range: £28,850 - £62,140

## Level 1

### Applied Science Level 1 Diploma (SC) 1 year

#### Entry Requirements:

- An Entry 3 qualification or GCSEs x 2 at grade 2 in maths or English
- Successful attendance at transition event

## Level 2

### Applied Science with Technology Level 2 Certificate (SC) 1 year

#### Entry Requirements:

- Level 1 qualification or GCSEs x 2 at grade 3 in maths or English
- Successful attendance at interview event

## Level 3

### Applied Science Level 3 Alternative Academic Qualification (SC) 1 year

**\*Note this qualification will be followed with option for an extended second year**

#### Entry Requirements:

- 4 x GCSEs at grade 4 including maths, English and science
- Successful attendance at interview event

### Forensics and Criminal Investigation Level 3 Extended Diploma (SC) 2 years

#### Entry Requirements:

- Level 2 qualification or GCSEs x 4 at grade 4 - one to be grade 4 in science and another in maths
- Successful attendance at interview event

## A Level

### A Level - Medical Pathway (TC) 2 years

#### Entry Requirements:

- 5 GCSEs at Grade 5 or above, including maths and English Language

## UCSE

### Criminology & Forensic Investigation BSc (Hons) (SC) 3 years

#### Entry Requirements:

64 UCAS Tariff Points or above made up from the following:

- At least two A levels
- Level 3 Extended Diploma/Diploma/Subsidiary Diploma/Certificate
- National Award/Certificate/Diploma
- International Baccalaureate
- Access to Higher Education Diploma (minimum 30 credits at Merit or above)
- GCSE English Language and maths at Grade 4 or above OR a Level 2 equivalent such as Functional Skills
- For any qualification not identified above the HE Admission Team will determine equivalences through UKNARIC
- Applicants wishing to be considered for entry to the second year of study, or wishing to import credits or evidence of prior learning into the course for which they are applying, will be considered in accordance with the awarding bodies policy on Accreditation of Prior (Experiential) Learning







# SPORT

Studying sport qualifications offers a comprehensive approach to understanding athletic performance, coaching, and sports management. These courses provide practical experience in areas such as physical training, sports science, and event organisation, helping you to develop both your physical skills and theoretical knowledge.

By engaging in hands-on projects and real-world scenarios, you will be well-prepared for a career in coaching, sports therapy, or sports administration, making you competitive in the diverse field of sports and fitness.

## SPORT

### LEVEL 1

**Sport and Active Leisure**  
Level 1 Diploma (SC)  
1 year



### LEVEL 2

**Sport**  
Level 2 First Extended Certificate (SC)  
1 year

**Personal Training Academy - Technical Occupational Entry in Fitness Coaching**  
Level 2 Certificate (SC) 1 year

**Football Academy - Sport**  
Level 2 Extended Certificate (SC)  
1 year

"I really enjoyed the practical side of the course. It helped me figure out what I want to do - now I'm focused on becoming a football coach."

**Adam Neale - Sport Student of the Year 2025**

### LEVEL 3

**Sports Coaching and Development**  
Level 3 Extended Diploma (SC) 2 Year

**Personal Training Academy - Technical Occupational Entry in Personal Training**  
Level 3 Diploma (SC) 1 year

**Sport and Exercise Sciences**  
Level 3 Extended Diploma (SC)  
2 years

**Football Academy - Sports Coaching and Development**  
Level 3 Diploma (SC) 2 years

**Sports Massage and Rehabilitation**  
Level 3 Diploma (SC) 1 year

### HTQ

**Community Coaching for England**  
Level 4 HTQ (SC)  
1 year

For more info on HTQs see page: 111

### UCSE

Progress on at our University Centre South Essex with a degree in BSc (Hons) Applied Sport and Exercise Science

For more info on UCSE see page: 110

#### Sports Coach

Salary Range: £15,080 - £32,490

#### Fitness Instructor

Salary Range: £15,690 - £27,190

#### Leisure and Sports Managers

Salary Range: £21,540 - £46,390

#### Football Coach

Salary Range: £19,000 - £29,000

## Level 1

**Sport and Active Leisure Level 1 Diploma (SC) 1 year**  
**Entry Requirements:**

- Entry Level 3 qualification or GCSEs x 2 at grade 2 in maths or English
- Successful attendance at transition event

## Level 2

**Sport Level 2 First Extended Certificate (SC) 1 year**  
**Entry Requirements:**

- Level 1 qualification or GCSEs x 2 at grade 3 in maths or English

**Personal Training Academy - Technical Occupational Entry in Fitness Coaching Level 2 Certificate (SC) 1 year**  
*Additional qualification within this programme - Instructing Circuit Training/Instructing Kettlebell Training*

**Entry Requirements:**

- Level 1 qualification or GCSEs x 2 at grade 3 in maths or English
- Successful attendance at interview event

**Football Academy - Sport Level 2 Extended Certificate (SC) 1 year**  
**Entry Requirements:**

- Level 1 qualification or GCSEs x 2 at grade 3 in maths or English
- Successful attendance at interview event and football trial

## Level 3

**Sports Coaching and Development Level 3 Extended Diploma (SC) 2 years**  
**Entry Requirements:**

- Four GCSEs grade 4 and above and/or a level 2 qualification

**Personal Training Academy - Technical Occupational Entry in Personal Training Level 3 Diploma (SC) 1 year**  
*Additional qualification within this programme - Specialist in Optimising Training for the Aging Client (Award)/ Specialist in Adapting Physical Activity for Antenatal and Postnatal Clients (Award)*

**Sports Massage and Rehabilitation Level 3 Diploma (SC) 1 year**  
**Entry Requirements:**

- Level 2 qualification in Physical Activity, Fitness and exercise science (Personal Training Academy) or similar, plus 4 GCSEs at grade 4-9, including maths or English
- Successful attendance at interview event

**Sport and Exercise Sciences Level 3 Extended Diploma (SC) 2 years**  
**Entry Requirements:**

- You will need a minimum of 4 GCSEs at grade 4-9, including maths, English, science and physical education

Or

- Sport Level 2 First Extended Certificate and grades 4-9 in maths and English

**Football Academy - Sports Coaching and Development Level 3 Diploma (SC) 2 years**  
**Entry Requirements:**

- Four GCSEs at grade 4 including maths, English and physical education, or
- Sport and Active Leisure Level 2 Diploma plus maths and English at grade 4, or equivalent
- Successful attendance at interview event and football trial

## HTQ (Level 4)

**Community Coaching for England Level 4 HTQ (SC) 1 year**  
**Entry Requirements:**

- Level 3 qualification in Sport or Sport & Exercise Science
- GCE Advanced Level profile that demonstrates strong performance in a relevant subject or adequate performance in more than one GCE subject. This profile is likely to be supported by GCSE grades at 9 to 4 (or equivalent) in subjects such as maths and English
- other related Level 3 qualifications
- Access to Higher Education Diploma from an approved further education institution
- relevant work experience

Or

- an international equivalent to the above qualifications

## UCSE

**Applied Sport and Exercise Science BSc (Hons) (SC) 3 years**  
**Entry Requirements:**

- You will need a minimum of 64 UCAS Tariff Points or above from one or more of the following:
- A Levels
- Level 3 Extended Diploma/Diploma/Subsidiary Diploma/Certificate
- National Award/Certificate/Diploma
- International Baccalaureate
- Access to Higher Education Diploma (minimum 15 credits at Merit or above)
- GCSE English Language and Maths at Grade 4 or above OR a Level 2 equivalent such as Functional Skills

For any qualification not identified above the HE Admission Team will determine equivalences through UK ENIC.







# TRAVEL & TOURISM

Studying travel and tourism qualifications offers a deep dive into the dynamics of the global travel industry, including customer service, travel planning, and destination management.

These courses provide practical experience in areas such as tour operations, event coordination, and hospitality, equipping students with the skills needed to thrive in various roles within the sector. By learning through real-world scenarios and industry projects, you will be prepared for a range of careers, from travel consultancy to event planning, making you well-suited for the vibrant and evolving world of travel and tourism.

This knowledge also helps you to understand global trends and cultural nuances, enhancing your ability to cater to diverse client needs.

## TRAVEL & TOURISM

### LEVEL 1

#### Hospitality and Tourism

Level 1 Introductory Diploma **(SC)** 1 year

### LEVEL 2

#### Travel and Tourism

Level 2 Extended Certificate **(SC) (TC)** 1 year

#### Air Cabin Crew

Level 2 Diploma **(SC) (TC)** 1 year

#### Aviation Environment

Level 2 Diploma **(TC)** 1 year

### LEVEL 3

#### Travel and Tourism

Level 3 Certificate **(SC) (TC)** 2 years

#### Hotel Manager

Salary Range: £30,000 - £60,000

#### Cabin Crew

Salary Range: £19,000 - £28,000

#### Airport Baggage Handler

Salary Range: £21,000 - £28,000

#### Air Traffic Controller

Salary Range: £46,000 to £100,000

"I really enjoyed the Travel and Tourism course. Everyone was friendly and treated me the same. They were also really understanding of my special needs, which made me feel more confident. It helped me learn new skills and make friends. I'd definitely recommend it to others!"

**Emily Hicks - Travel and Tourism Student of the Year 2025**



## Level 1

### Hospitality and Tourism Level 1 Introductory Diploma (SC) 1 year

**Entry Requirements:**

- Four GCSEs at grade 2 including maths and English plus two other subjects
- Successful attendance at transition day

## Level 2

### Travel and Tourism Level 2 Extended Certificate (SC) (TC) 1 year

**Entry Requirements:**

- Level 1 qualification or GCSEs x 4 at grade 3 to include English and maths (alternatives can be discussed with tutor)

### Aviation Environment Level 2 Diploma (TC) 1 year

**Entry Requirements:**

- Four GCSEs at Grade 3 to include English and maths
- Ability to work to a Level 2 standard in maths and English
- Confident to work independently, stand up and present using a microphone to project voice
- A passion for aviation

### Air Cabin Crew Level 2 Diploma (SC) (TC) 1 year

**Entry Requirements:**

- It is more beneficial if you are at least 17 years old to start this programme, however each case will be reviewed individually
- Level 1 qualification or GCSEs x 4 at grade 3 - to include English and maths (alternatives can be discussed with tutor)

## Level 3

### Travel and Tourism Level 3 Certificate (SC) (TC) 2 years

**Entry Requirements:**

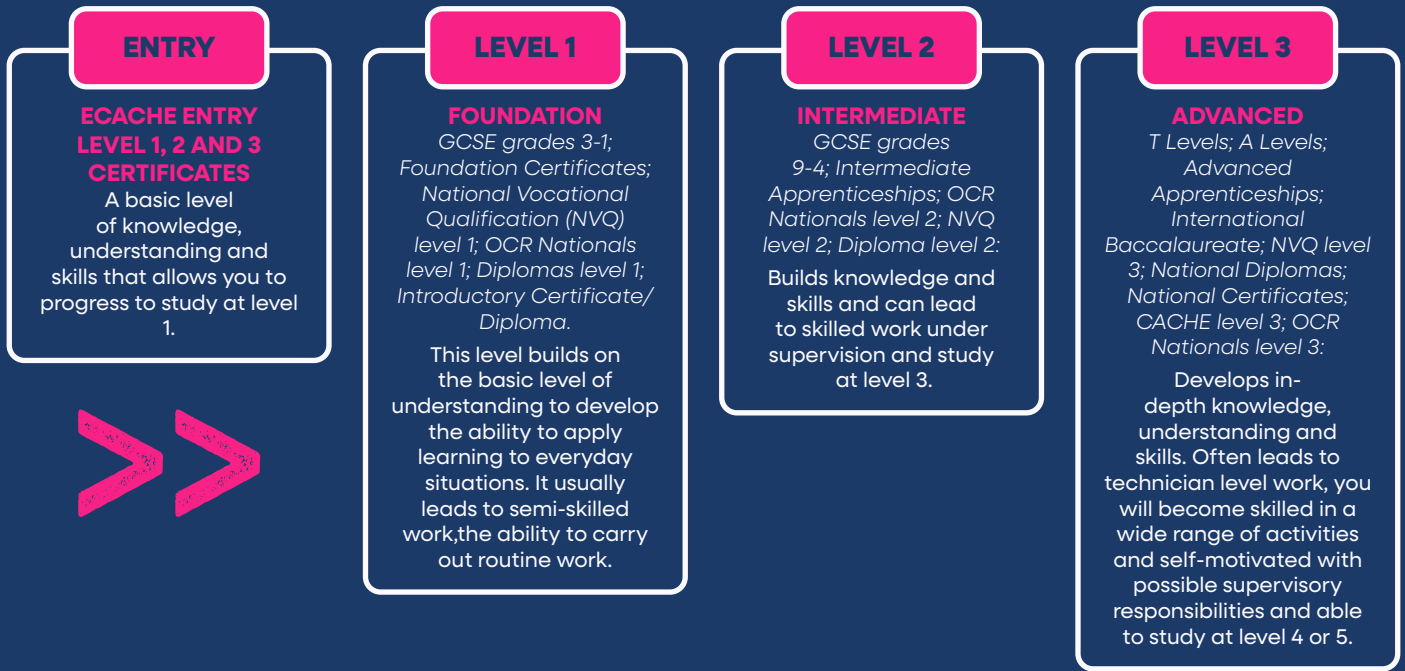
- Level 2 qualification or GCSEs x 4 at grade 4 - to include English and maths



# COURSE LEVELS AND PROGRESSION ROUTES



## FURTHER EDUCATION



## HIGHER EDUCATION



# PROGRESSION TO UNIVERSITY CENTRE SOUTH ESSEX



South Essex Colleges Group is proud to offer a wide range of degrees and higher education qualifications awarded by leading institutions, including University of East Anglia, University of the Arts London, The Open University, City & Guilds and Pearson.

A higher education qualification from UCSE will equip you for career success with our strong employment focus and industry links. Qualifications are all about preparing you for your future. Our close links with employers help us ensure our curriculum reflects what is expected in an industry – giving you a head start in the jobs race. Our tutors have a wealth of experience and maintain close links with companies in Britain and abroad. Many of our programmes place an emphasis on practical learning, so not only do you get the qualifications you need to enter your chosen career but you can expect to gain plenty of work experience too.

- Direct progression routes from FE to HE
- Career-focused degrees
- Flexibility and convenience
- Supportive, safe and nurturing environment



For more information: [www.southessex.ac.uk/he](http://www.southessex.ac.uk/he)

# PROGRESSION TO HIGHER TECHNICAL QUALIFICATIONS (HTQS)



HTQs have been developed by awarding bodies, who have worked with employers and businesses to make sure that learners get the specific training, knowledge and skills they need for their chosen career.

## WHAT CAN A HTQ DO FOR ME?

- A HTQ offers you the opportunity to take a high-quality Level 4 or 5 qualification that has been specifically designed with employers to meet their needs.
- This means that HTQs can unlock high-skilled, highly-paid jobs that you can jump straight into.
- There are also often clear pathways to progress to further study from HTQs for those that want to pursue a degree.

## HTQS ARE FOR YOU IF YOU ARE:

- ✓ Aged 18 and over
- ✓ Looking to retrain or upskill
- ✓ Focused on gaining the knowledge and practical experience needed for a skilled job
- ✓ A more practical learner
- ✓ Excited about studying an employer-led course
- ✓ Interested in progressing to further study or training



More information: [www.southessex.ac.uk/higher-technical-qualifications](http://www.southessex.ac.uk/higher-technical-qualifications)



# PROGRESSION TO SOUTH EAST INSTITUTE OF TECHNOLOGY



### INDUSTRY SUBJECTS AVAILABLE:

- Business
- Construction
- Digital
- Engineering and Automation
- Health and Life Sciences
- Logistics

Through a partnership of several colleges, universities and employers, South Essex Colleges Group is able to offer you a range of courses and apprenticeships created specifically for entry into several prominent industries.

Covering areas such as Engineering and Automation through to Business and Health Sciences, these courses have been designed alongside employers to offer you the best opportunity to progress into these rapidly developing fields.

By studying a course with the SEIoT you will have access to state-of-the-art equipment and teaching facilities.

Our curriculum has been developed with input from industry specialists to ensure that you are armed with the skills and knowledge that are relevant and valuable to employers.

More information:  
[www.southessex.ac.uk/south-east-institute-of-technology](http://www.southessex.ac.uk/south-east-institute-of-technology)



## COURSES OFFERED:

- Accounting and Finance\*\* BSc (Hons)
- AIM Person Centred Counselling Level 4
- Animation BA Hons
- Applied Sport and Exercise Science BSc (Hons)
- Art and Design Foundation Level 4
- Certificate in Education (CertEd)
- Costume Construction BA Hons
- Counselling BA Hons
- Creative Media & Promotion BA Hons
- Criminology & Forensic Investigation BSc Hons
- Early Years Care and Education BA (Hons)
- Film & Television Production BA Hons
- Fine Art BA Hons
- Games Design BSc Hons
- Graphic Design & Illustration\* BA Hons
- Hair and Makeup Design and Application for Production\*\* BA (Hons) Top Up
- Hair and Makeup Design and Application for Production FdA
- Interior & Spatial Design BA Hons
- Mental Health and Well-Being\*\* FdSc
- Performing Arts (Acting Pathway) HND
- Performing Arts\*\* BA Hons (Top Up)
- Photography BA Hons
- Public Services (Policing) HNC
- Professional Graduate Certificate in Education (FE and Skills Sector) PgCE
- Psychology & Criminology BSc (Hons)
- Psychology & Sociology BSc (Hons)
- Special Educational Needs and Disability Studies BA (Hons)

\*Subject to validation | \*\*Subject to revalidation

## HIGHER TECHNICAL QUALIFICATIONS (HTQS)

### Engineering / Construction

- Automation and Control for England Level 4
- Construction Management for England Level 4/5
- Mechatronics for England Level 4/5

### Sport

- Community Coaching for England Level 4

### Health

- Healthcare Professions Support for England Level 5

### IT

- Computing for England (Network Engineering) Level 4/5
- Digital Technologies (Cybersecurity) Level 4/5
- Digital Technologies (Data Analytics) Level 4/5

### Business

- Leadership and Management for England Level 4/5

### Early Years

- Early Years Senior Practitioner Level 5

## UCSE OPEN EVENTS:

- 4 October 2025 - Forum
- 29 November 2025 - HHPP
- 10 January 2026 - Forum
- 18 March 2026 - Forum (Evening)
- 21 May 2026 - Uni Fair (Luker Road)



# INDEX

Course	Page
<b>Animation &amp; Games Design</b>	<b>32</b>
Animation	32
Computer Game Design	32
Concept Art	32
Digital Technologies	32
Esports	32
Games Design	32
Games Development	32
<b>Art &amp; Design</b>	<b>36</b>
Animation	36
Fashion	36
Graphic Design	36
Illustration	36
Photography	36
3D Design	36

<b>Business Management and Accounting</b>	<b>40</b>
Administrator	40
Digital Business	40
Finance Assistant	40
Leadership	40
<b>Catering and Hospitality</b>	<b>44</b>
Confectionery	44
Cookery	44
Customer Service	44
Patisserie	44
<b>Construction</b>	<b>48</b>
Bricklaying	48
Carpentry	48
Construction Management	48
Domestic Heating Technician	48
Electrical Installation	48
Joinery	48
Plumbing	48
<b>Early Years Education</b>	<b>52</b>
Childcare	52

Early Years	52
Education	52
Practitioner	52
Primary Setting	52
<b>Engineering</b>	<b>56</b>
Automation and Control	56
Craft	56
Electrical and Electronic	56
General Engineering	56
Installation and Repair	56
Machinist	56
Maintenance and Operations	56
Maritime	56
Mechatronics	56
Welding	56
<b>ESOL</b>	<b>60</b>
<b>Foundation and Supported Learning</b>	<b>62</b>
<b>Hair &amp; Beauty</b>	<b>64</b>
Beauty Therapy	64

Fashion, Theatre & Media Hair and Makeup	64
Hair and Makeup Design and Application for Production	64
Hairdressing	64
Media Makeup	64
Specialist Techniques	64
<b>Health</b>	<b>68</b>
Healthcare	68
Nursing	68
<b>Information Technology</b>	<b>72</b>
Business Services	72
Computing	72
Cybersecurity	72
Data Analytics	72
Network Engineering	72
Production	72
Support Services	72
<b>Media</b>	<b>76</b>
Communications	76
Creative Media Production	76

Digital Technologies (Media)	76
Interactive Digital Media	76
Media, Broadcast and Production	76
Print Media	76
Television and Film Production	76
<b>Motor Vehicle</b>	<b>80</b>
Automotive Maintenance	80
Maintenance and Repair	80
Services Technician	80
<b>Music</b>	<b>84</b>
Performance	84
Production	84
<b>Performing Arts</b>	<b>88</b>
Acting	88
Dance	88
Live Events	88
Musical Theatre	88
Theatre Production	88
<b>Public Services</b>	<b>92</b>

Policing	92
Uniformed Services	92
<b>Science</b>	<b>96</b>
Criminology and Forensics	96
Forensics and Criminal Investigation	96
Medical	96
<b>Sport</b>	<b>100</b>
Active Leisure	100
Coaching and Development	100
Exercise, Health and Sports	100
Fitness and Exercise Science	100
Football Academy	100
Personal Training	100
Physical Activity	100
Sport Massage Therapy	100
<b>Travel and Tourism</b>	<b>104</b>
Air Cabin Crew	104
Aviation Environment	104
Hospitality	104

# BASILDON

**LUCKYN LANE, BASILDON,  
SS14 3AX, 5-7PM:**

9 October 2025 | 29 January 2026

**5-6PM:**

31 March 2026

**STEPHENSON ROAD,  
SOUTHEND, SS9 5LY, 5-7PM:**

11 November 2025 | 3 February 2026

**5-6PM:**

16 April 2026

**COLLEGE WAY, BASILDON,  
SS14 1DF, 5-7PM:**

21 October 2025 | 10 February 2026

**5-6PM:**

29 April 2026

# SOUTHEND CITY

**LUKER ROAD, SOUTHEND, SS1 1ND, 5-8PM:**

25 September 2025 | 14 January 2026

**5-7PM:**

12 March 2026

# THURROCK

**HIGH STREET, GRAYS, RM17 6TF, 5-8PM:**

1 October 2025 | 7 January 2026

**5-7PM:**

25 March 2026



SCAN HERE