

# UCSE

## HIGHER EDUCATION GUIDE

Degrees | HNDs | HNCs | Access to HE

2024-2025



UNIVERSITY CENTRE  
south essex

**We hope that you  
enjoy discovering  
more about  
University Centre  
South Essex**

**Denise Brown**  
Principal &  
Chief Executive

# WELCOME

By choosing to study at this vibrant, modern university centre you can be assured of receiving a high quality education and an excellent student experience.

Our degrees and higher education qualifications are awarded by leading institutions, including University of East Anglia, University of the Arts London, The Open University, City & Guilds and Pearson.

Our ambition is to provide you with a qualification that equips you with the knowledge and transferable skills to successfully embark on your chosen career path or to continue with further study.

We hope that you enjoy discovering more about University Centre South Essex and the benefits of studying here, and look forward to seeing you at one of our higher education open events in the near future.

**Denise Brown**





Principal &  
Chief Executive





# CONTENTS

ABOUT	Our partners	6
	Reasons to study at University Centre South Essex	8
	Discover our campuses	16
COURSES	<b>Art &amp; Design</b>	<b>18</b>
	<b>Computing</b>	<b>22</b>
	<b>Costume &amp; Media</b>	<b>26</b>
	<b>Counselling, Psychology and Sociology</b>	<b>30</b>
	<b>Criminology and Forensic Investigation</b>	<b>34</b>
	<b>Education and Training</b>	<b>38</b>
	<b>Engineering</b>	<b>44</b>
	<b>Games Design &amp; Animation</b>	<b>48</b>
	<b>Hair and Makeup Design and Application for Production</b>	<b>52</b>
	<b>Performing Arts</b>	<b>56</b>
	<b>Access to HE Courses</b>	<b>60</b>
INFORMATION & GUIDANCE	Fees & funding	62
	Accommodation	64
	FAQ's admissions	66
	Entry requirements	70
	Course list A-Z	80
	Open events	82

 SouthEssexColl  
 southessexcollege  
 southessexcollege  
 southessexcollege

[southessex.ac.uk/university](http://southessex.ac.uk/university)

**Find out more about studying  
at University Centre  
South Essex**

visit [www.southessex.ac.uk](http://www.southessex.ac.uk) or  
call 0345 52 12345 to talk to  
our admissions team

# QUALITY PARTNERSHIPS

Our courses are accredited by top class institutions giving you the opportunity to study for a qualification that will steer you into the career of your dreams or smooth your progress to further studies.

## ual:

### University of the Arts London (UAL)

University of the Arts London offers an extensive range of courses in art, design, fashion, communication and performing arts. Its graduates go on to work in and shape creative industries worldwide.



University of East Anglia

### University of East Anglia (UEA)

University of East Anglia is world renowned for excellence both in learning and research. With alumni including Booker Prizewinning authors Ian McEwan, Kazuo Ishiguro and Anne Enright. The University of East Anglia (UEA) is consistently ranked in the top 25 of UK university league tables.



## Pearson

### Pearson

Building on their extensive body of applied research, Pearson's experts design, and our tutors deliver courses that empower learning. This year over 100,000 students in the UK and worldwide will choose an HNC or HND to help them progress in their career. A Pearson's accredited qualification is recognised by employers globally.





### **The Open University**

The Open University has provided learning courses for over two million students. Its courses are respected and recognised by employers and educational institutions world-wide. The CertEd and PgCE courses offer practice-focused qualifications suitable for people working, volunteering or seeking to further their career in the education sector.



### **City & Guilds**

Established in 1878, City & Guilds are globally recognised and respected; working with education providers, employers and governments in over 100 countries across the world to help people, businesses and economies grow by shaping skills systems and supporting skills development.



# REASONS TO STUDY AT UCSE



## CAREER - FOCUSED DEGREES

A higher education qualification from University Centre South Essex (UCSE) will equip you for career success with our strong employment focus and industry links.

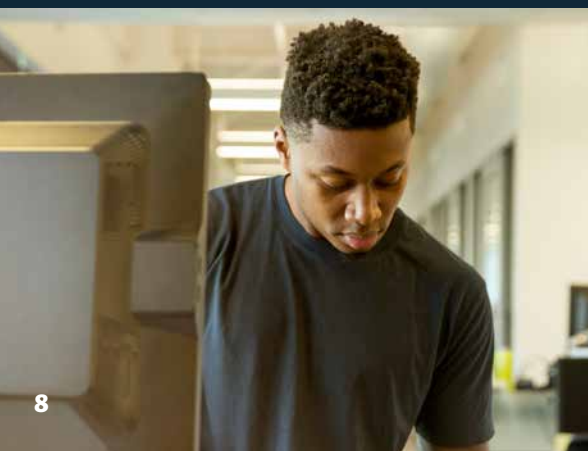
Qualifications are all about preparing you for your future. Our close links with employers help us ensure our curriculum reflects what is expected in an industry – giving you a head start in the jobs race. Our tutors have a wealth of experience and maintain close links with companies in Britain and abroad.

Many of our programmes place an emphasis on practical learning, so not only do you get the qualifications you need to enter your chosen career but you can expect to gain plenty of work experience too.

Our team of careers advisers are also on hand to provide information, advice and guidance on the range of progression opportunities available to you after completing your higher education programme. Our careers professionals continually find innovative ways to develop, through projects and workshops, other core skills that employers are seeking, using the UCSE "Employability Award" as a structure for students to follow. The award supports students' careers and personal development by formally recognising the extra-curricular activities, work-related activities and career learning they complete during your time at the University Centre South Essex. It is designed to help you gain experience and develop key skills that employers want.

Ultimately, you'll be armed with a good mix of practical and classroom experience that appeals to employers.

Whether you are progressing from further education, seeking a change in your field of employment or looking to take the next step in your career, now could be the right time to invest in your future with UCSE.



# FLEXIBILITY AND CONVENIENCE

Some of our students come straight from sixth form while others have taken a break or spent time in work prior to starting their degree. This means you'll not only find people just like you, but you'll also be part of a diverse community who will enrich your life.

## Technology and Resources

Our campuses are full of industry-specific equipment, labs, studios and study areas. You will also benefit from The Forum Southend-on-Sea, the Backstage Centre at Purfleet and the East Wing at Thurrock, each of which has spectacular modern facilities.



## Case Study - Gus Nweke

My name is Augustus Nweke, I am 51 years old, I studied Fine Art at University Centre South Essex and this is my story.

I first studied Access to Higher Education and went on to do my Bachelor's degree in Fine Arts. Before studying I worked as a security officer.

My foundation course prepared me for the next level. It wasn't a difficult decision to make when I decided to further my studies because I received world-class preparation. I would like to thank Dr Cherry, Andy, Matt and a host of other very supportive staff who helped me. I gained valuable collaborative, organisational and leadership skills whilst studying. At the University Centre you get all the support you need to succeed.

I would recommend studying at University Centre South Essex because it understands the needs of adult students. They are flexible, supportive and welcoming. All the staff are interested to see you succeed.

My time at the University improved my self-confidence and made me believe in myself and my ability. It helped me to become focused and enabled me to set goals.

# SUPPORTIVE, SAFE AND NURTURING ENVIRONMENT

Our classes are small so you get more personal attention, support and an individual learning experience which maximises your opportunity to achieve great things.

Our aim is to support you from application through to your graduation and beyond with the highest quality information, advice and guidance. Our student support team has been assessed for, and attained, the highest quality standards.



## Case Study - Zack Short

My name is Zack Short and I studied BA (Hons) Criminology and Forensic Investigation at the UCSE.

I started at the college in 2017 and did a Level 2 Diploma in Applied Science course. It was a challenge at first with my visual impairment but eventually I was able to progress to the Level 3 Extended Diploma in Applied Science.

I then chose to progress to a BSc (Hons) Criminology & Forensic Investigation which I thought could lead to an interesting career in the criminological field. My

support staff were amazing, they dealt with me for nearly seven years.

My visual impairment isn't related to the eyes, it is related to a skin condition called Pseudoxanthoma Elasticum (PXE), which is extremely rare. It has numerous different affects, but in my case it has affected my eyes quite badly and parts of my brain.

As I mentioned earlier, I get amazing support from the communicators here at UCSE. They are saints because they get the work done and even if they are under stress, they get it out on time which is phenomenal. They have saved me more than once. I get help from scribes who take notes for me, I can get help setting up equipment and measurements or modified rulers. The communicators here provide tactile graphs, braille sheets etc.

I would say to anyone who has a disability and was thinking of studying at UCSE 'just go for it, take the shot even if you are nervous.'

## Can I get extra support while I'm studying?

Yes, the student support team is based on the third floor of the Southend Forum and deals with a range of issues including; disability support, study skills, careers advice and guidance, accommodation, funding issues, wellbeing and any other general concerns that may be impeding studies. This location is designed exclusively for HE students and allows the team to be in direct contact with students, lecturers and staff. All of the team regularly travel to other campuses and provide drop in or booked sessions as required. A number of staff members are trained in mental health first aid and we have a team of pastoral coaches and safeguarding officers who can provide confidential support and advice. They

can refer students to trained counsellors and can also provide contact details for specialist support groups and organisations.

### **Can I get careers advice and guidance?**

Yes, our careers co-ordinators will provide you with impartial, information, advice and guidance for all your career and employability needs. The co-ordinators offer a friendly and professional service covering a range of topics including career planning, developing key graduate employability skills, CV writing, interview techniques, work experience, internship support, exploring progression routes and postgraduate study.

### **Can I get help with academic skills and technology?**

Yes, our advisors can support you in developing or refreshing the skills you need to manage your studies. Workshops, one-to-ones and drop in sessions take place throughout the year to ensure that you have all the tools you need to succeed.

### **Is there financial advice available?**

Yes, our advisers can discuss money matters with you and inform you of the financial support you may be eligible for from both Student Finance England and the university centre. They will support you with any applications and can help you to understand your budget whilst you study.

### **Is there support available if I have a disability?**

Yes, our disability adviser will be able to provide you with advice and support about studying with us if you have a disability or long term health condition that is likely to have an impact on your studies. You can access confidential, ongoing guidance relating to your individual needs, which may include a specific learning difficulty, a physical or sensory impairment, Autistic Spectrum Disorder, or mental health difficulty. Our experienced adviser facilitates support for students with a variety of disabilities, recognising that individuals may have very different needs. If you have a formal diagnosis and are a home student, additional

support may be available to you in the form of Disabled Students' Allowance (DSA). We can assist you with your application for DSA and help you arrange a DSA Needs Assessment.

### **Tackling Harassment & Sexual Misconduct**

University Centre South Essex are committed to providing a safe environment to all students, staff and visitors. All employees, workers, contractors, students and visitors are expected to be treated, and to treat each other, with dignity and respect and are clear that we have zero tolerance towards:

- Sexual assault and harassment
- Relationships/Domestic Abuse
- Harassment and Bullying
- Hate Crime
- Honour crimes, FGM, Forced Marriages

University Centre South Essex will provide all students with equal access to appropriate, confidential support. If University Centre South Essex undertakes an investigation into harassment or sexual misconduct, both the reporting and the reported party will be offered support through the investigation process. The University Centre treats all reports of sexual violence and harassment seriously and with utmost sensitivity, we promise to thoroughly investigate all reports of inappropriate behaviour and conduct. We will implement recommendations and/or actions in line with the disciplinary policy, equality and diversity policies, and contract of employment.

We want to make sure that your voices are heard. Whoever you are, and whoever you're reporting, we will listen to you. It doesn't matter if it's someone in a position of authority, a member of staff, a student or someone from outside of our community. Whenever an incident is reported we will take proportionate action.

We want you to feel empowered to report an incident, and we hope that by making it easier to report, you will feel safe and know that we are all working together to make our community an inclusive and welcoming environment.

[www.southessex.ac.uk/he/he-support-services](http://www.southessex.ac.uk/he/he-support-services)

# EARNING POTENTIAL

Undertaking a higher education course with us is an investment in your future. Graduates earn £10,000 more per year than those who don't go to university. The figures by the Department for Education show a continued rise; in 2021, the median salary for working-age graduates was £36,000. This was £10,000 more than working-age non-graduates (£26,000).\*

Graduates are more likely to work in highly-skilled posts than non-graduates. You can therefore, potentially earn more as soon as you finish your degree.

Furthermore, the chances of obtaining a more senior role increases once you complete your undergraduate degree in all the major sectors such as public administration, education and health industries.

That was something that I thought was so difficult at university because I just wanted to spend my time learning, researching and creating and having a deadline was so difficult. Little did I know deadlines would be so much shorter in working life.

Since graduation, I have been fortunate enough to have worked consistently. Beginning as a junior designer at start-up companies, to print production companies to local agencies. Through doing this, I've gained so much valuable experience which has enabled me to where I am today.

Also, in my spare time, I do freelance graphic design work and run my own Etsy shop selling my linocut prints. I also do signwriting and lettering jobs where I can and have exhibited my work in places such as Brick Lane's Truman Brewery and Beecroft Art Gallery. I've attended local art fairs and pop-up shops around Essex selling my work too, which has been great networking with likeminded artistic local talent.

I'm currently working as a creative designer at Swan Creative, Leigh on Sea.



## Case Study - Ellise Collins

My name is Ellise Collins I am 27 years old, I studied BA (Hons) Graphic Design at South Essex College from 2014 – 2017 and this is my story.

My time at South Essex College gave me invaluable experience within the field. Having industry-led briefs in the third year gave me an understanding of what sort of work would be required of me and time frames. Deadlines!



\*Source: [explore-education-statistics.service.gov.uk/find-statistics/graduate-labour-markets](https://explore-education-statistics.service.gov.uk/find-statistics/graduate-labour-markets)

# PERSONAL DEVELOPMENT

Student life is not all about studying, it's also about meeting new people, forming new friendships and making the most of the opportunities that higher education can provide. Studying with us will increase your life experiences by learning new skills and developing new interests, helping you become a more confident and well-rounded adult.



## Case Study - Tony Waghorne

My name is Tony Waghorne, I am 26 years old, I first studied Animation and progressed to Film and Television Production at UCSE from 2012 until 2017 and this is my story.

Before coming to study at UCSE my background was, 'I don't know what I want to do'. I always had a heavy involvement in sport but sadly we can't all be Premier League footballers. I've always been creative and when picking GCSE subjects an art teacher convinced me to take it and I developed an interest. I knew I had the ability to tell a story and it wasn't until an open day at the college I stumbled across animation.

UCSE was perfect for me. I was a short 10 minute train journey away and to be honest I really didn't want to move away to university. I knew I'd get distracted and not get the grade I was hoping for and eventually finish with.

The university prepared me for the workplace by putting me in real world situations. Strict deadlines, communicating with me like a colleague and not a pupil and not to mention the industry-level equipment.

I currently work as a senior videographer for Nash Tackle Limited. Nash Tackle are one of Europe's leading carp fishing brands and in the media department we make anything from studio-shot product videos to feature-length documentaries shot all over Europe.

The equipment at the university, especially the editing softwares and machines are identical to what I use and what I always have used in the industry.

My time at UCSE helped 100% with my confidence. I'm not a confident person and there's many moments you don't look forward to when studying, presenting in front of a class for example, but these are the things that really help develop you and confidence is something that has been key to my career development.



# GREAT OPPORTUNITIES FOR MATURE STUDENTS

Getting back into education when you have a few more years on the clock can be a challenge, but here at University Centre South Essex we can offer you top class, affordable study near to your home. Previous experience can often be taken into account when applying for higher education courses.

Technically, a mature student is defined as "any student aged 21 or over at the start of their studies" and UCAS has indicated that approximately half of mature undergraduate UK entrants are aged between 21 and 24 and 39 per cent are between 25 and 39.

As a mature student, the choice to continue your education is down to you. Whereas younger students are often acting on advice from family and friends, mature students usually make independent decisions based on clear

motivations. Older students have also had more time to understand their personal strengths and weaknesses; this means you can choose a degree and learning format that suits you.

At UCSE we offer flexible entry requirements and your application will be given individual consideration. You may be able to use work experience, training, professional and life experiences as part of your application.

For many mature students, studying provides a break from the norm and a chance to try something new. This fresh perspective and enthusiasm will help you complete your degree.

Every mature student will have a wealth of life experience that can be drawn on. Just through watching the news, reading books and interacting with other people you will have built on your knowledge of the world and society.





### Case Study - Dee Dolphin

My name is Dee Dolphin, I am 51 years old and I studied BA (Hons) Early Years Education at University Centre South Essex from 2019 until 2022 and this is my story.

Before studying at the University Centre South Essex, I had worked in the Early Years sector for 30 years, initially as a parent volunteer to eventually training to become a family learning tutor with the Basildon Adult College. I taught story sack workshops, the flying start course and worked with the travelling community and harder to reach families. Most recently I was an Early Years Instructor in a small primary school and have two adult children of my own who have both gone to university.

The best thing about higher education is gaining confidence and self-belief. I was worried that being a mature student would be seen as a weakness by future employers and my class peers but that is not case at all. I never expected to learn about myself, gain confidence as well as become a welcome member of a great class.

I have learned to value the skills I had already and increase my confidence and it's amazing what everyone brings to the degree course while learning from each other. We have gained skills through creating portfolios, documents, presentations, and online lessons which have already prepared me for the future workforce and online learning. Our tutors have provided us with extra courses that we've been able to add to our skillset, for example The Poetry Basket Course, Forest School Skills and the Paediatric First Aid certificate. We've benefited from having leading guest speakers, most recently, Elaine Bennett.

If you want a small community, where you make great friends and your tutors know you as an individual, this is the right place. It's an easy commute, either by train or car and the library is in the same building.

Looking ahead, I want to gain QTS and remain working within the Early Years sector with the aspiration of working with harder to reach families in the future.

# OUR CAMPUSES

## Travel / Accessibility

All our campuses have excellent transport links. They are very close to bus and railway stations that have direct links to London.

## Centre for Digital Technologies Basildon

Basildon Centre for Digital Technologies is situated in the heart of Basildon town centre.

The Centre for Digital Technologies houses state-of-the-art facilities and equipment for students on courses with a tech focus including IT networking, app development, games design and animation. The three-storey project has been built on the previous market site thanks to a partnership between Basildon Council, Homes England and South Essex College.

Areas of the building have been modelled on tech sector offices, giving that innovative 'Google' feel to a lot of the open plan spaces. Students will be able to experience working in this kind of modern environment, preparing them to enter the industry.



## The Bob and Tamar Manoukian Costume Centre

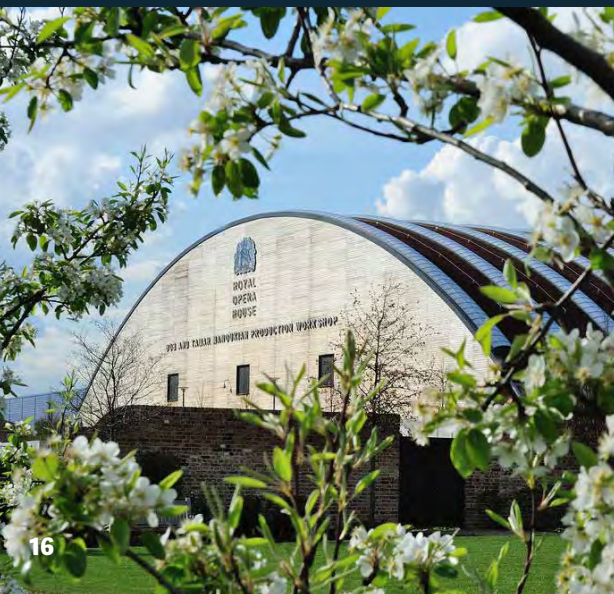
Located in High House Production Park in Purfleet, the Bob and Tamar Manoukian Costume Centre, built in partnership with the Royal Opera House, hosts the university centre's BA (Hons) Costume Construction degree.

This unique course gives students the opportunity to work alongside professionals from one of the most prestigious theatres in the world.

## The Backstage Centre

Located in the High House Production Park, Purfleet and purpose-built in 2013 to accommodate major productions, live events, rehearsals, conferences and workshops, The Backstage Centre was designed in consultation with industry experts from some of the world's best theatre live production venues. The result is a stunning state-of-the-art production environment.

This provides an invaluable opportunity for our students to learn in a real working environment.



## The Forum

The Forum, opposite our Southend Campus, is a library and learning zone that houses loanable university centre books, public library books, study spaces, WiFi access, and computers.

The third floor is home to a teaching & study space specifically for our higher education students, with access to university centre network computers and a whole range of resources. A dedicated Higher Education Resources Facilitator, based in the space full-time, is on hand to provide one-to-one guidance and support with all aspects of higher education written work and research, as well as conduct group workshops on a range of study skills.

University students also benefit from a dedicated library portal providing access to scholarly literature.

## Southend City Campus (Luker Road)

Located next to Southend Central station, our Southend Campus offers an impressive range of vocational subjects and adult courses. The courses are set in realistic work environments using cutting-edge technology.

Media students get access to a high-definition television studio, radio studio, fully-equipped photographic studio with digital SLR cameras, dedicated art and design work spaces, performing arts studios and a journalism newsroom. Sound and music production students have access to Xtreme, our well-equipped off-site recording and rehearsal studio, which includes mixing, recording, rehearsal and sequencing facilities.

Southend Campus also has science labs, an animal management centre, a sports lab and a 250 seat Performance Pod. There are over 2,000 PCs and plenty of Apple Mac computers to do everything from graphic design to film editing. Our town centre location means there is a huge selection of shops, restaurants, leisure and entertainment venues a short walk away.



## Luckyn Lane Campus (Basildon)

Luckyn Lane is located opposite Gloucester Park in Basildon. It offers Engineering, Construction, Building Services and Transport courses. Combining cutting-edge technology and high-end facilities.



# ART & DESIGN

A B C D E F G H I J K L M N O P Q R S T U V W X Y Z

A B C D E F G  
H I J K L M N  
O P Q R S T  
U V W X Y Z

a b c d e f  
g h i j k l m  
n o p q r s  
t u v w x  
y z ? ! , ü ß

K L N O R

T ! , ;



A B C D E F G H  
I J K L M N O P  
Q R S T U V W  
X Y Z 0 1 2 3 4 5  
6 7 8 9 ! , & ?

A B E F H J K L

M S U V X Z

A B C D E F G H I J  
K L M N O P Q R S  
T U V W X Y Z



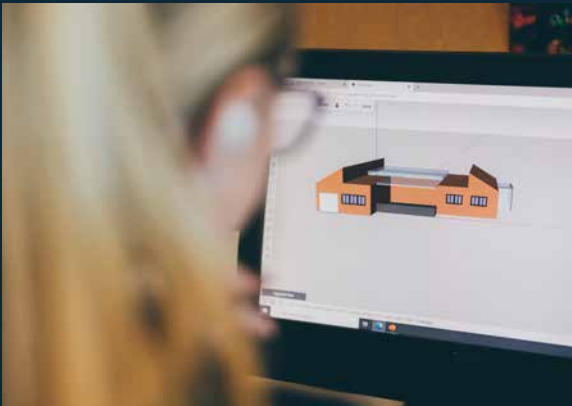
**Our Art & Design team are committed to providing you with top quality programmes that are taught by industry-trained professionals.**

Our staff will strongly encourage your individuality and creative flair, to equip you with the confidence and innovation to work independently after your course. Our aim is to help develop your knowledge to enable you to pursue your chosen career, both within and outside the creative industry.

Our strength is in our determination to provide a pro-active, creative atmosphere, which observes and responds to current working practices and encompasses new developments in the sector.

Our Art & Design courses are supported by the wide range of facilities available at University Centre South Essex, we have Mac Suites, Sketch Up, Graphics tablets. Access to Adobe Creative Suite, laser and vinyl cutters. 35mm film cameras, film cameras, DSLR cameras, digital cameras, studio lighting, a dark room. We also have a large printmaking studio with screen-printing equipment, print presses, letterpresses.

Further facilities include the library at The Forum, The Learning Resource Centre and dedicated course studios.



# COURSES, CAREERS AND ALL YOU NEED TO KNOW

The Art & Design courses will all involve guest speakers, visiting lecturers and industry focussed workshops over the three years. These courses offer strong industry links with a programme of exciting 'live' projects and opportunities for work placements which often result in job offers at the end of the programme. Students benefit from several field trips and will have the opportunity to build their portfolio.

Third Year students will have the opportunity to showcase their final year work at the end of their studies. This may be a local, national or online platform.

UCSE students will benefit from excellent student/tutor teaching time. All of our HE courses are timetabled for 13 hours which is way above the national average.

*Information on entry requirements can be found on page 70 or by checking our website. To see all information on each course and the course breakdown please visit:*

**[southessex.ac.uk/he/ucse-courses](https://southessex.ac.uk/he/ucse-courses)**

**What's next/Careers:** Craft artist, Self-employment, Arts administrator, Arts manager, Art director, Graphic designer, Visual merchandiser, Interior designer, Photographer, Fine artist, Illustrator, Sculpture artist, Tattoo artist, Web designer, Pattern designer, Photo editor, Set designer, Muralist, Printmaker, Interior designer, Packaging designer, Architect, UI/UX designer, Copywriter, Architectural technician, Archivist, Art therapist, Art valuer, Bookbinder, Community arts worker, Conservator, Copy editor, Director of photography, Editorial assistant, Ergonomist,

Exhibition designer, Furniture designer, Glassmaker, Indexer, Model maker, Museum curator, Product designer, Reprographic assistant, Signwriter, Visual merchandiser, Freelance, Art teacher, Art critic, Videographer, Rigging artist.

## **Our graduate destinations:**

Paul Siggins - The Mosaic Studio, Jaguar Design, Black Square Litho Printing, BBB Midi magazine publishers, Roamers Caterers, Compass Creative, Financial Times.

## **ART & DESIGN COURSES**

Courses Validated by UAL

# ual:

### **Fine Art BA (Hons)**

Duration: 3 Years  
UCAS Code: W100  
Campus: Southend  
Cost per year: £8,000\*

### **Graphic Design & Illustration BA (Hons)**

Duration: 3 Years  
UCAS Code: W210  
Campus: Southend  
Cost per year: £8,000\*

### **Interior Design BA (Hons)**

Duration: 3 Years  
UCAS Code: W250  
Campus: Southend  
Cost per year: £8,000\*

### **Photography BA (Hons)**

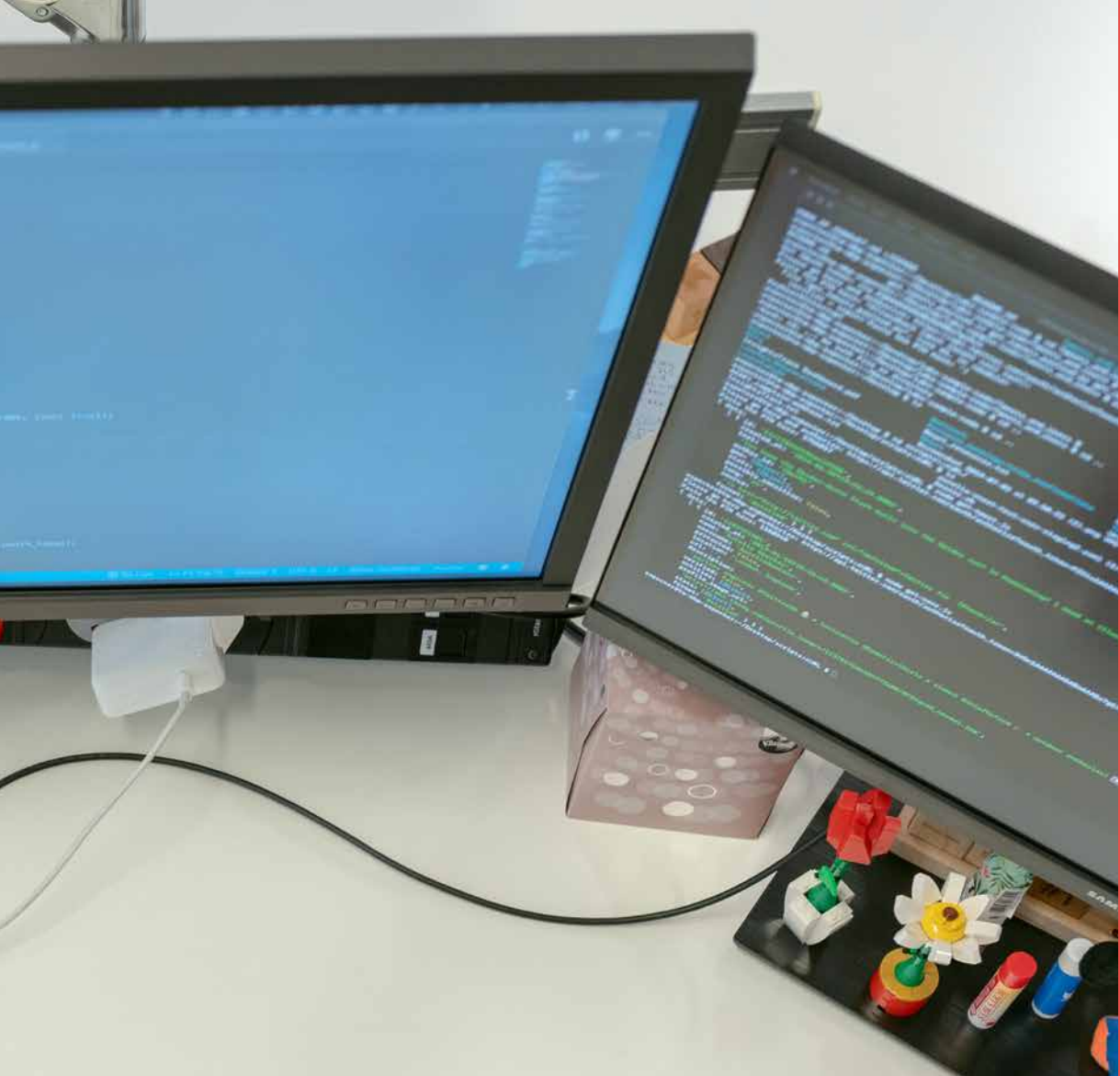
Duration: 3 Years  
UCAS Code: W640  
Campus: Southend  
Cost per year: £8,000\*



\*Fees are per academic year for home/UK students. For more information about what's included in the cost please see course details on website. For additional costs please visit [www.southessex.ac.uk/he/he-fees-and-funding](https://www.southessex.ac.uk/he/he-fees-and-funding)

# COMPUTING





**Computing is the foundation of many successful business and the job market is booming.** If you want to stay ahead of the curve and analyse the latest technologies across a range of exciting industries, then choosing to study computing is a good move for you.

Our Computing courses are a stepping stone towards a career in a specialist computing science subject. The courses will prepare you for a career in programming, website development, networking or as a database administrator.

The HNC Computing course introduces you to the core concepts of programming such as algorithms and the characteristics of programming paradigms.

The HND Computing course aims to enhance your career and employability prospects in the computer science and IT industries by developing a critical awareness and appreciation of current IT issues. Students who have achieved an HNC in computing can progress to this HND and then on to university if desired.



# COURSES, CAREERS AND ALL YOU NEED TO KNOW

Focusing on information systems, visual programming, systems analysis, database design, data structures, relational databases, networks and programming for the internet.

Teamwork, communication and project management skills, which are very important in the workplace, are developed throughout these courses.

UCSE students will benefit from excellent student/tutor teaching time. All of our HE courses are timetabled for 13 hours which is way above the national average.

*Information on entry requirements can be found on page 70 or by checking our website. To see all information on each course and the course breakdown please visit:*

**[southessex.ac.uk/he/ucse-courses](https://southessex.ac.uk/he/ucse-courses)**

**What's next/Careers:** App developer, Business analyst, Cyber intelligence officer, Data entry clerk, Data scientist, Database administrator, E-learning developer, Forensic computer analyst, IT project manager, IT security co-ordinator, IT service engineer, IT support technician, Network engineer, Network manager, Software developer, Systems analyst, User experience (UX) designer, Web developer.

**Our graduate destinations:** ICT system support specialists, IT network manager.

**Progression Opportunities:** Professional development qualification, Vendor qualifications offered by Cisco, Microsoft, IBM, CompTIA, Oracle and VM Ware.

## COMPUTING COURSES

Courses Validated by Pearson



### Computing HNC

Duration: 1 Year  
Campus: Basildon  
Cost per year: £7,000\*

### Computing HND

Duration: 2 Years  
Campus: Basildon  
Cost per year: £7,000\*



\*Fees are per academic year for home/UK students. For more information about what's included in the cost please see course details on website. For additional costs please visit [www.southessex.ac.uk/he/he-fees-and-funding](https://www.southessex.ac.uk/he/he-fees-and-funding)

# COSTUME AND CREATIVE MEDIA



ENTS.....

see a member of staff/ Technician if you require fabrics from these shelves





**At University Centre South Essex we offer a range of courses that will give you the skills you need to embark on a career in the costume & creative media industry.**

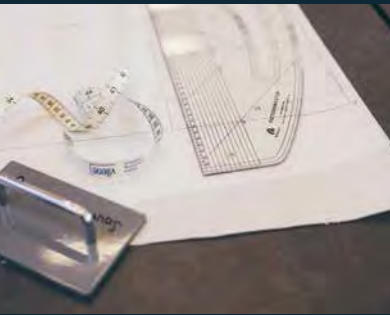
At University Centre South Essex we have computers and Mac Suites with the Adobe Creative Suite installed for access to all creative experimentation. Further facilities include the library at The Forum, The Learning Resource Centre and dedicated course studios.

The BA (Hons) Costume Construction is run in collaboration with the Royal Opera House (ROH). This programme is delivered across two locations, the first at our Grays Campus, where our newly updated costume and print studios are based. The second is at the ROH Costume Centre at Purfleet which has been purpose built for the ROH and houses their archive collections, costume store and one of their workroom departments. Both campuses provide students the opportunity to utilise industry standard machinery and resources.

Our degree in Creative Media and Promotion offers direct entry to the creative media industry, specifically for careers in digital media, promotional design, social media marketing, commercial signing & photography, creative publishing, branding, advertising and trend forecasting.

The BA (Hons) Film & Television Production course introduces our students to the latest modern technology, including a fully-equipped TV studio with cameras and live vision-mixing desk by Blackmagic Design. For single-camera or location productions, students are encouraged to use the Blackmagic Pocket Cinema 6k for their filming.

The course was designed with an understanding of the past (our students are encouraged to experiment with filming on vintage Super 8mm film cameras as well as cutting-edge digital formats) and one eye firmly on the future (including the exploration of virtual filmmaking, and the possibilities of using virtual sets built in Unreal Engine).



# COURSES, CAREERS AND ALL YOU NEED TO KNOW

The Costume & Creative Media courses will all involve guest speakers, visiting lecturers and industry focussed workshops will be included in your course over the three years. These courses offer strong industry links with a programme of exciting 'live' projects and opportunities for work placements which often result in job offers at the end of the programme. Students benefit from several field trips and will have the opportunity to build their portfolio.

Third Year students will have the opportunity to showcase their final year work at the end of their studies. This may be a local, national or online platform.

UCSE students will benefit from excellent student/tutor teaching time. All of our HE courses are timetabled for 13 hours which is way above the national average.

*Information on entry requirements can be found on page 70 or by checking our website. To see all information on each course and the course breakdown please visit:*

**[southessex.ac.uk/he/ucse-courses](https://southessex.ac.uk/he/ucse-courses)**

**What's next/Careers:** Fashion Designer, Stylist, Retail buyer, Marketing, Magazine stylist, Fashion photographer, Costume designer, Women's wear, Menswear, Tailoring, Costume Assistant, Costume conservation and restoration, Digital Marketing Executive, Social Media Content Creator, Public Relations Assistant, Marketing Assistant, Publishing, Advertising, Film and Digital Production, Production, Dressmaker, Editorial assistant, Film critic, Footwear designer, Media researcher, Screenwriter, Wardrobe assistant.

**Our graduate destinations:** BBC, Channel 4, London & Hollywood post-production companies, Own production companies, including Tunnel Shark, Producer for Moon and World of Warcraft, Gravity for Framestore. Netflix 'The Crown' (Costume assistant), Marlow Theatre (Wardrobe assistant). New Look (Buying admin assistant), Marks & Spencer (Marketing assistant).

## COSTUME & CREATIVE MEDIA COURSES

Courses Validated by UAL

# ual:

### **Costume Construction BA (Hons)**

Duration: 3 Years  
UCAS Code: B5L2  
Campus: Thurrock  
Cost per year: £9,000\*

### **Creative Media & Promotion BA (Hons)**

Duration: 3 Years  
UCAS Code: W213  
Campus: Southend  
Cost per year: £8,000\*

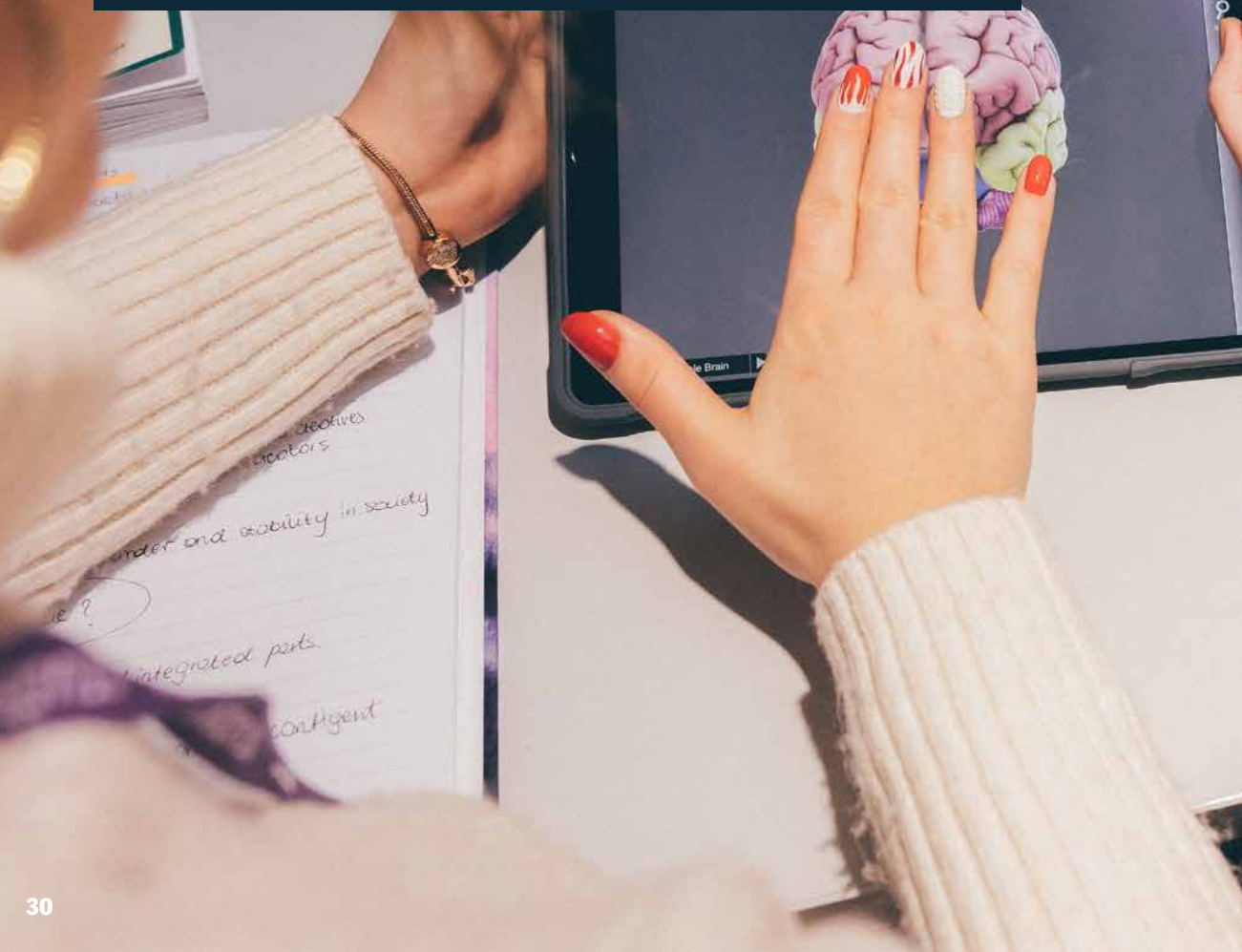
### **Film & Television Production BA (Hons)**

Duration: 3 Years  
UCAS Code: P320  
Campus: Southend  
Cost per year: £8,000\*



\*Fees are per academic year for home/UK students. For more information about what's included in the cost please see course details on website. For additional costs please visit [www.southessex.ac.uk/he/he-fees-and-funding](https://www.southessex.ac.uk/he/he-fees-and-funding)

# COUNSELLING, PSYCHOLOGY AND SOCIOLOGY





**By choosing to study to become a counsellor you will be taking the first steps towards assisting people struggling in a variety of areas, including but not limited to: mental health conditions such as anxiety, depression, PTSD, or eating disorders.**

The BA (Hons) Counselling course provides a strong theoretical and practical base to start your professional counselling practice, whilst working towards individual registration with the British Association for Counselling and Psychotherapy.

**By combining psychology with sociology, you'll get the flexibility to focus closely on the roles and experiences of individuals and groups within modern society, with a particular emphasis on cultural and international factors.**

The underpinning philosophy of the BSc (Hons) Psychology and Sociology course is to provide you with the ability to apply theory, concepts and ideas across psychological and sociological disciplines.



# COURSES, CAREERS AND ALL YOU NEED TO KNOW

The Counselling, Psychology and Sociology courses will all involve group interaction, paired and individual work, one-to-one seminars, guest speakers, support from subject specialist mentors and regular tutorial input. For the counselling course you will be expected to complete a minimum amount of practice hours.

UCSE students will benefit from excellent student/tutor teaching time. All of our HE courses are timetabled for 13 hours which is way above the national average.

*Information on entry requirements can be found on page 70 or by checking our website. To see all information on each course and the course breakdown please visit:*

**[southessex.ac.uk/he/ucse-courses](https://southessex.ac.uk/he/ucse-courses)**

## **What's next/Careers:**

Cognitive behavioural therapist, Communication support worker, Counsellor, Forensic psychologist, Life coach, Occupational therapist, Palliative care assistant, Psychological wellbeing practitioner, Psychologist, Psychotherapist, Residential support worker, Victim care officer, Senior care worker, Substance misuse outreach worker, Youth worker, Police family liaison worker, Family support worker, Social worker, Care worker, Child protection officer, Portage services within social services, Children's centres, Safeguarding and wellbeing, mental health nurse, Psychiatrist.

## **Our graduate destinations:**

Masters Qualifications in Psychology, Social Work, Fashion Psychology, Mental Health, Clinical and Forensic Psychology, The Terence Higgins Trust, Women's Refuge, Homeless UK, Chelmsford Prison. Police family liaison worker, Children's centres.

## **COUNSELLING, PSYCHOLOGY AND SOCIOLOGY COURSES**

Courses Validated by UEA



### **Counselling BA (Hons)**

Duration: 3 Years

UCAS Code: B940

Campus: Southend

Cost per year: £8,500\*

### **Psychology & Sociology BSc (Hons)**

Duration: 3 Years

UCAS Code: L340

Campus: Southend

Cost per year: £8,000\*



\*Fees are per academic year for home/UK students. For more information about what's included in the cost please see course details on website. For additional costs please visit

[www.southessex.ac.uk/he/he-fees-and-funding](https://www.southessex.ac.uk/he/he-fees-and-funding)

# **CRIMINOLOGY & FORENSIC INVESTIGATION**





**Studying these two subjects together gives you the opportunity to discover a wide range of exciting, challenging and remarkable careers in the criminal justice sector.** This degree allows you to explore the nature, extent and causes of a range

of crime types and the methods used to manage crime and criminal behaviour.

Students have access to great laboratory facilities and crime scene room and have the opportunity to attend visits/talks from industry professionals.



# COURSES, CAREERS AND ALL YOU NEED TO KNOW

This course is underpinned by the four key distinct disciplinary strands of forensic investigation, criminology, criminal justice and work-related skills/experience. These four strands enable you to analyse contemporary issues from a range of multidisciplinary perspectives, providing essential transferable skills for employment.

UCSE students will benefit from excellent student/tutor teaching time. All of our HE courses are timetabled for 13 hours which is way above the national average.

*Information on entry requirements can be found on page 70 or by checking our website. To see all information on each course and the course breakdown please visit:*

**[southessex.ac.uk/he/ucse-courses](https://www.southessex.ac.uk/he/ucse-courses)**

## **What's next/Careers:**

Criminologist, Fingerprint examiner, Scenes of crime officers (SOCOs), Intelligence analyst, Counter terrorism, Domestic abuse co-ordinators, Laboratory testing, Prison workers, Crime scene investigator, Forensic scientist, Anatomical pathology technicians (APTs), Laboratory technician, Disaster victim identification.

## **Our graduate destinations:**

Essex and Metropolitan Police, Human rights groups such as Amicus.

## **CRIMINOLOGY AND FORENSIC INVESTIGATION COURSES**

Course Validated by UEA



## **Criminology & Forensic Investigation BSc (Hons)**

Duration: 3 Years

UCAS Code: LF64

Campus: Southend

Cost per year: £8,000\*



\*Fees are per academic year for home/UK students. For more information about what's included in the cost please see course details on website. For additional costs please visit [www.southessex.ac.uk/he/he-fees-and-funding](https://www.southessex.ac.uk/he/he-fees-and-funding)

# EDUCATION AND TRAINING

The background image shows a classroom setting. In the foreground and middle ground, there are several rows of white rectangular desks with black chairs. The chairs have a blue mesh backrest. In the background, there is a large whiteboard mounted on a light-colored wall. A small red eraser is visible on the wall below the whiteboard. The lighting is bright and even.

**Teaching is a highly rewarding occupation that offers excellent employment prospects and great career progression.**

Here at UCSE we have a range of teacher training programmes that offer small class sizes and great support.

Early Years Education is one of the most exciting and rewarding occupations. As an early years professional you can help to transform children's lives and play an instrumental role in helping to prepare them for learning and later life.

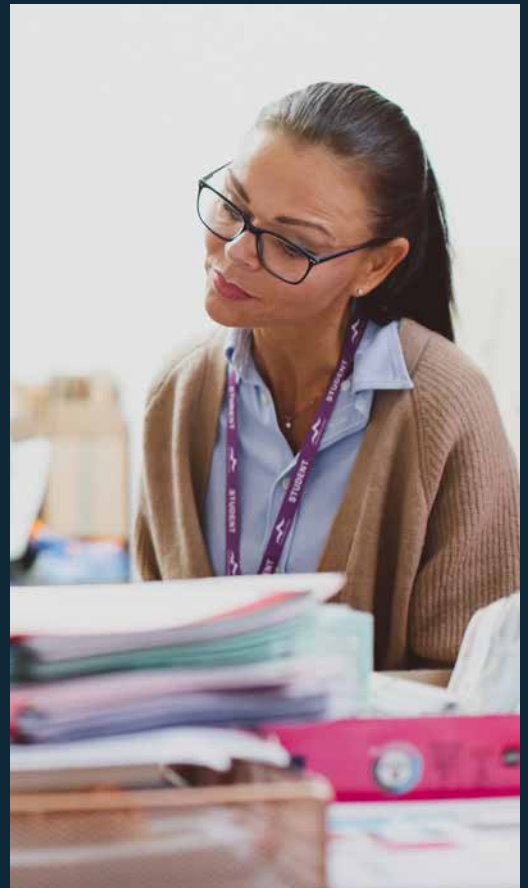
The BA (Hons) Special Educational Needs and Disability (SEND) Studies degree provides you with the theoretical and legislative skills that allow you to work in a variety of educational and care settings supporting those with specific needs (including learning disabilities, physical disabilities and mental health issues).

The Certificate in Education (Further Education and Skills Sector) is a Level

5 teaching qualification which has a teaching/ training practice requirement. This course is ideal if you work, or want to work as a teacher or trainer in the further education and skills sector; if you are in or want to start a career in a teaching or training role; if you are a teacher or trainer who is seeking career progression in your area of work. This course is a recognised Full Teacher Training qualification, eligible for QTLS application on completion.

Our Level 5 Diploma in Education and Training course fulfils the professional requirements for becoming a teacher in the lifelong learning sector.

The PgCE course is ideal if you work, or want to work as a teacher or trainer in the further education and skills sector; if you are in or want to start a career in a teaching or training role; if you are a teacher or trainer who is seeking career progression in your area of work.



# COURSES, CAREERS AND ALL YOU NEED TO KNOW

The Education and Training courses will all involve group interaction, paired and individual work, one-to-one seminars, guest speakers, support from subject specialist mentors and regular tutorial input. You will be expected to complete a minimum amount of practice hours.

UCSE students will benefit from excellent student/tutor teaching time. All of our HE courses are timetabled for 13 hours which is way above the national average.

*Information on entry requirements can be found on page 70 or by checking our website. To see all information on each course and the course breakdown please visit:*

**[southessex.ac.uk/he/ucse-courses](https://southessex.ac.uk/he/ucse-courses)**

## **What's next/Careers:**

Secondary school teacher,  
Primary school teacher,  
Learning support assistant  
(LSA), Lecturer, Tutor, Nursery  
worker, Nursery management,  
Associate and full time lecturer,  
Children's centres, Sure Start  
centres, Childminder, Education  
welfare officer, Learning mentor,  
Nanny, Youth worker, Careers  
adviser, English as a foreign  
language (EFL) teacher, Ofsted  
inspector, Wellbeing officer,  
Headteacher, Deputy Head,  
Head of Year, Behaviour officer,  
School business manager,  
Special educational needs  
(SEN) teacher.

## **Our graduate destinations:**

QTS or QTLS, Working in early years  
setting overseas, including  
Japan, SCITT, National Office  
of Statistics, Foster care teams,  
SEND inclusion teams, Pupil  
referral units, Mental health  
teams and care management,  
Deputy SENCO roles, Youth  
intervention teams, Early Years/  
Early intervention teams.

## **EDUCATION AND TRAINING COURSES**

Courses Validated by UEA



### **Early Years Care and Education BA (Hons)**

Duration: 3 Years

UCAS Code: X310

Campus: Southend

Cost per year: £8,000\*

### **Special Educational Needs and Disability Studies BA (Hons)**

Duration: 3 Years

UCAS Code: X161

Campus: Southend

Cost per year: £8,000\*

---

Course Validated by  
City & Guilds



### **Education and Training Level 5 Diploma**

Duration: 2 Years

Campus: Southend

Cost per year: £2,750\*



\*Fees are per academic year for home/UK students. For more information about what's included in the cost please see course details on website. For additional costs please visit [www.southessex.ac.uk/he/he-fees-and-funding](https://www.southessex.ac.uk/he/he-fees-and-funding)

## EDUCATION AND TRAINING COURSES

Courses Validated by the Open University



### **Certificate in Education (CertEd)**

Duration: 1 Year (Full Time)  
Campus: Southend  
Cost per year: £7,750\*

### **Certificate in Education (CertEd)**

Duration: 2 Years (Part Time)  
Campus: Southend  
Cost per year: £3,875\*

### **Professional Graduate Certificate in Education (FE and Skills Sector) (PgCE)**

Duration: 1 Year (Full Time)  
Campus: Southend  
Cost per year: £7,750\*

### **Professional Graduate Certificate in Education (FE and Skills Sector) (PgCE)**

Duration: 2 Years (Part Time)  
Campus: Southend  
Cost per year: £3,875\*



\*Fees are per academic year for home/UK students. For more information about what's included in the cost please see course details on website. For additional costs please visit [www.southessex.ac.uk/he/he-fees-and-funding](http://www.southessex.ac.uk/he/he-fees-and-funding)

### **Progression Opportunities:**

Qualified Teacher status (QTS) or Qualified Teacher: Learning and Skills status (QTLS), QTLS is equivalent to but distinct from QTS for ages 5-11 or 11-18 in schools, School-based Initial Teacher Training (SCITT), Graduate Teacher Training (GTP), Primary Postgraduate Certificate in Education (Primary PgCE - can study at UCSE).

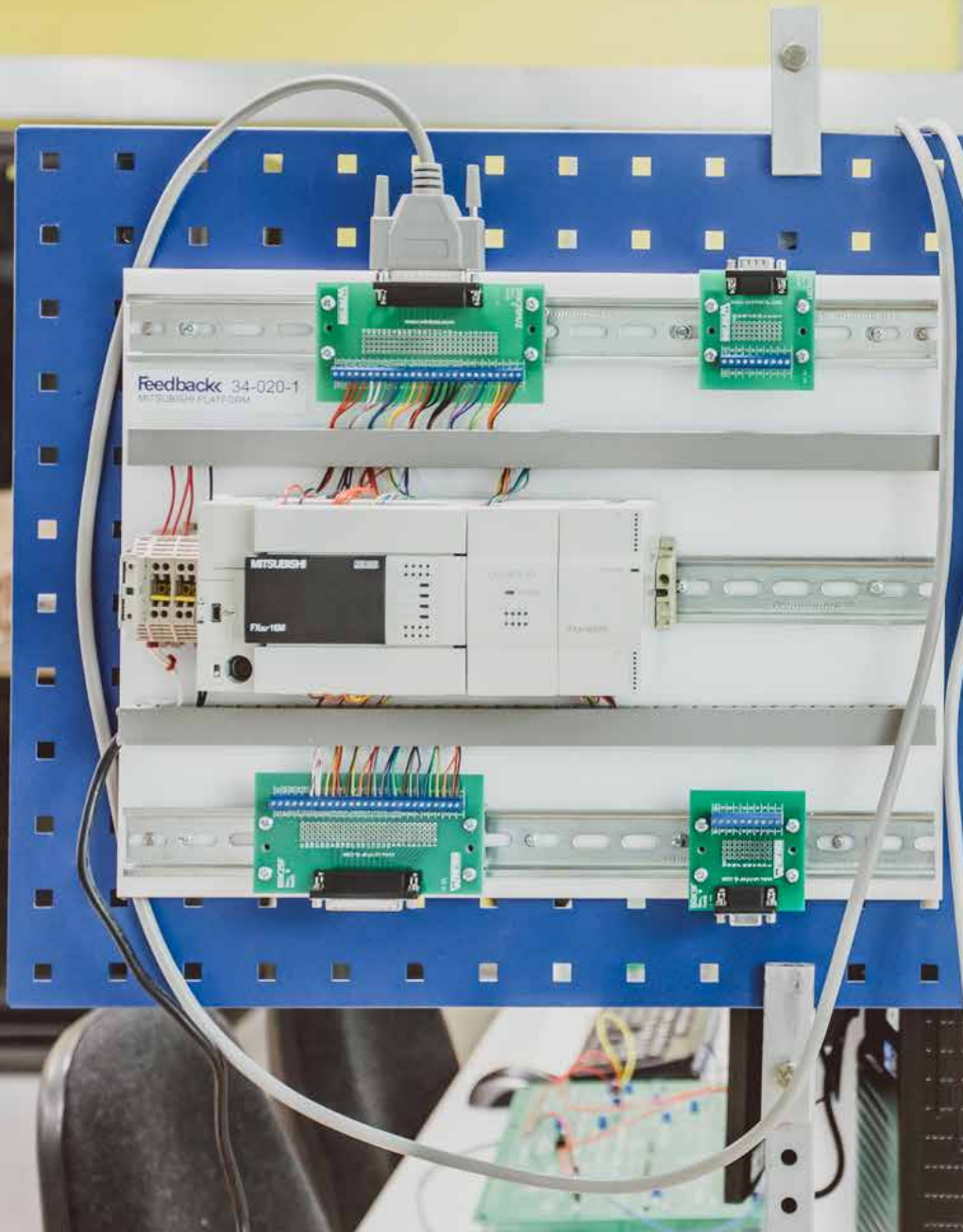
### **DBS Checks:**

For many of these courses you will be required to provide evidence of Satisfactory Disclosure and Barring Service (DBS) enhanced check, in advance of starting the course and your placement. These are a requirement by law, in order to complete any work placements within an educational or community environment. Evidence of this will be required during the application process.

More information on DBS checks available on page 72.



# ENGINEERING



**By studying an HNC/HND at UCSE, you will be part of a technological revolution.**

With the current industry skills gap it is important that you are taught within a fully up-to-date and technologically advanced environment, that has been developed with employers to ensure the skills you learn, acquire and improve are relevant and allow for continual innovation.

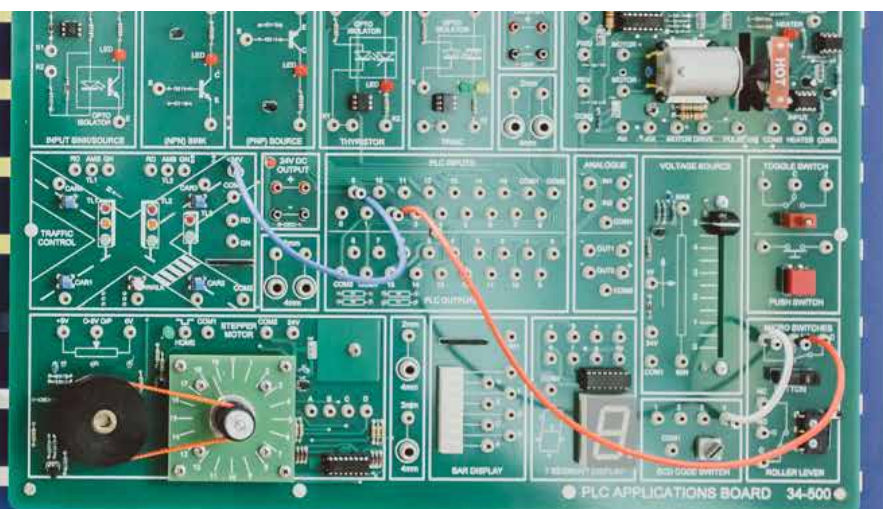
The huge investment within the engineering department for the IoT and HNC/HND at Thurrock has provided state of the art, industry ready classrooms and workshops where you will be working with high quality equipment that will stretch and challenge your abilities in a safe and inclusive environment and allow you to enhance your innovative qualities as an engineer.

We have brand new 3D printers which allow for multi material printing for every level

of requirement. We have a large CAD suite with high power PC's and double screens and, within the same room, a FulMax immersive all round screen to display, present and share your work. With its cutting-edge VR that critically allows teams to work together rather than alone via a headset.

We have a full suite of Lucas Nuelle smart factory where industrial automated production lines can be simulated in all their varying complexity, and a Unitrain system that provides computer-based training and experimentation covering areas of basic and advanced electrical engineering, electronics and automotive technology.

The facilities we have at UCSE will ensure your chosen pathway is taught within a consistently improving and updating atmosphere.





# COURSES, CAREERS AND ALL YOU NEED TO KNOW

Through high-quality lectures, case study research and employer-based projects you will gain a unique blend of general skills along with specific industry knowledge. UCSE also has an excellent range of specialist laboratories, workshops and equipment providing access to resources that support learning.

The ability to study part-time alongside your job allows you to gain an industry-recognised qualification that is accepted around the world. The HNC becomes your passport to advancing your career. Studying and working at the same time does require good organisational and time management skills, but it allows you to apply your learning immediately to your job as well as to bring in real-life examples from your work into the learning environment to discuss with peers.

Following graduation from the HNC, you are eligible to progress onto a Higher National Diploma (HND) or onto a full degree programme.

UCSE students will benefit from excellent student/tutor teaching time. All of our HE courses are timetabled for 13 hours which is way above the national average.

*Information on entry requirements can be found on page 70 or by checking our website. To see all information on each course and the course breakdown please visit:*

**[southessex.ac.uk/he/ucse-courses](https://southessex.ac.uk/he/ucse-courses)**

## **What's next/Careers:**

Architectural technologist,  
Construction manager,  
Surveyor, Civil engineer, Audio  
visual technician, Building  
control officer, Building site  
inspector, CAD technician,  
Electrical engineer, Electronics  
engineer, Engineering  
construction technician,  
Structural engineer.

## **Our graduate destinations:**

Skanska, Gilles-Surveyors,  
Bradford Watts, Sharkey.  
Progressed to study at  
Greenwich University and the  
Open University.

## **ENGINEERING COURSES**

Courses Validated by Pearson



### **Electrical and Electronic Engineering (HNC) Part Time**

Duration: 2 Years  
Campus: Thurrock  
Cost per year: £3,500\*

### **General Engineering (HNC)**

Duration: 2 Years  
Campus: Thurrock  
Cost per year: £3,500\*



\*Fees are per academic year for home/UK students. For more information about what's included in the cost please see course details on website. For additional costs please visit [www.southessex.ac.uk/he/he-fees-and-funding](https://www.southessex.ac.uk/he/he-fees-and-funding)

# GAMES DESIGN & ANIMATION





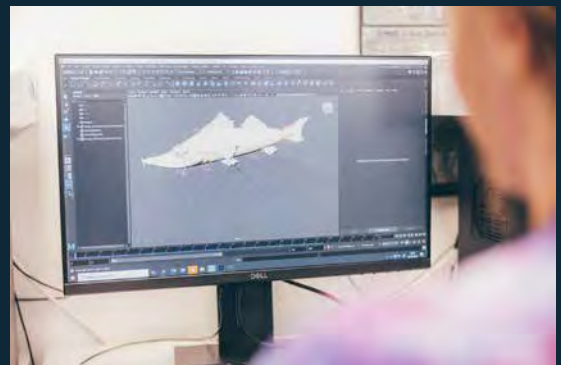
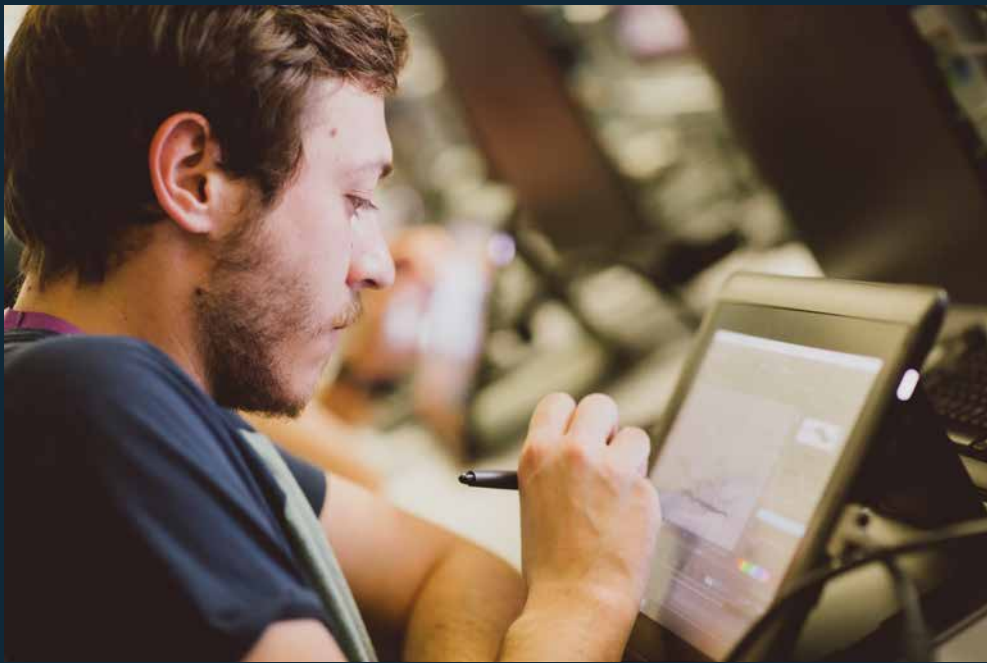
**Our Games Design and Animation courses offer fantastic facilities such as a green screen room, recording and presenting room.**

Tools and systems such as advanced computers with dual graphic cards and dual screens, touch screen teaching screens, art rooms with traditional art materials (oil/gouache/watercolour paints, chalk, charcoal, clay, puppet making materials etc.) Life drawing classes, 2D and 3D animation, modelling and vfx masterclass workshops.

Computer rooms with equipment featuring up-to-date specs, motion capture suits, 3D printers, Xbox One game console,

PlayStation game console, Axis Neuron Motion Capture Suit, Rokoko Motion Capture Suit (full body and facial capture), Wacom Intuos Pro Tablets, Wacom Intuos Tablets. Zoom recorders and Shotgun microphones, Sony digital cameras, Toon Boom Harmony and Storyboard Pro with free work from home versions for students (software), Software such as Zbrush, Unity game engine, Unreal game engine, Adobe Creative Suite incl. Photoshop, Substance Painter, etc. Visual Studio, Autodesk Suite incl. Maya, Mudbox, CAD (software), Blender (software).

And many more to match industry requirements and expectations.



# COURSES, CAREERS AND ALL YOU NEED TO KNOW

The Games Design and Animation courses will all involve guest speakers, visiting lecturers and industry focussed workshops will be included in your course over the three years. These courses offer strong industry links with a programme of exciting 'live' projects and opportunities for work placements which often result in job offers at the end of the programme. Students benefit from several field trips and will have the opportunity to build their portfolio.

Third Year students will have the opportunity to showcase their final year work at the end of their studies. This may be a local, national or online platform.

UCSE students will benefit from excellent student/tutor teaching time. All of our HE courses are timetabled for 13 hours which is way above the national average.

*Information on entry requirements can be found on page 70 or by checking our website. To see all information on each course and the course breakdown please visit:*

**[southessex.ac.uk/he/ucse-courses](https://www.southessex.ac.uk/he/ucse-courses)**

**What's next/Careers:** Illustrator, Sculpture artist, T UI/UX designer, Animator, Freelance, 2D animator, 3D animator, Video editor, 2D illustrator, Character animator. FX Artist, Concept Artist, Environment Artist, Visual Designer, Level Designer, Animation Programmer. Applications developer, Concept artist, Game artist, Game designer, Games developer, Multimedia programmer, Multimedia specialist, Software engineer, VFX artist.

**Progression Opportunities:** MSc Computer Science, MSc Computer Games Technology, MSc Computer Game Engineering, MSc Games Development, MSc Computer Games Systems, MA Animation. MA Character Animation, MA Illustration and Visual Media, MA Interaction Design Communication.

**Our graduate destinations:** Fox International Channels, Blue-Zoo Studios, Nerve Studios, Six Red Squares.

## GAMES DESIGN & ANIMATION COURSES

Courses Validated by UAL

# ual:

### **Animation BA (Hons)**

Duration: 3 Years

UCAS Code: W615

Campus: Centre for Digital Technologies - Basildon

Cost per year: £8,000\*

### **Games Design BSc (Hons)**

Duration: 3 Years

UCAS Code: WG24

Campus: Basildon

Cost per year: £8,000\*



\*Fees are per academic year for home/UK students. For more information about what's included in the cost please see course details on website. For additional costs please visit [www.southessex.ac.uk/he/he-fees-and-funding](https://www.southessex.ac.uk/he/he-fees-and-funding)



# HAIR AND MAKEUP DESIGN AND APPLICATION FOR PRODUCTION

52



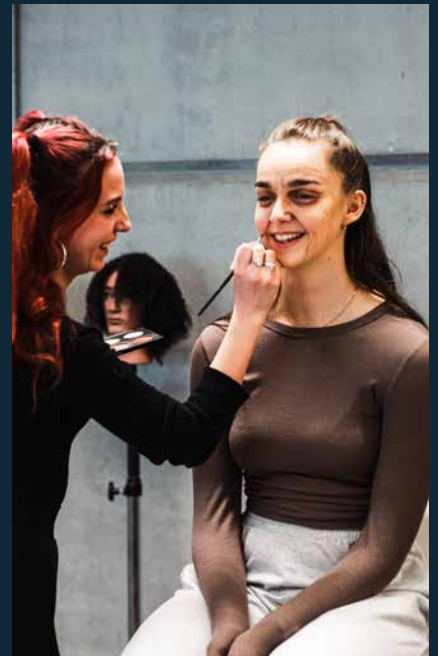
**Students study in a professional hair and makeup studio set within live, working film studios based in Purfleet where they have access to state-of-the-art equipment and the newest technologies for prosthetics, hair and special effects/makeup. UCSE is the only university to have a dedicated Afro and textured hair unit in the UK.**

The facilities include a dedicated prosthetics classroom in Thurrock which features the latest 3D printer technology. There is a large study area, chill out room, two design studios with access to MAC computers and a small library. Students

have access to photography lighting, cameras and back drops for portfolio shoots with additional studio space.

Students have the use of a huge variety of industry trusted products. They will learn skills such as hair punching, Avant Garde Afro design and how to create made-to-measure wigs and gain vital industry techniques to the highest of standards including business and sustainability skills.

The tutors are industry professionals and students will have the opportunity to attend regular workshops and masterclasses by the key figures in Film, TV and theatre.



# COURSES, CAREERS AND ALL YOU NEED TO KNOW

The course aims to train students to be multiskilled makeup artists who will be able to deliver industry-standard work in a commercial or production setting for TV, film and stage. Guest speakers, visiting lecturers and industry focussed workshops will be included in your course across your time at University Centre South Essex. These courses are designed to be vocationally driven with a focus on strong industry links delivered through a programme of exciting 'live' projects.

Final Year students will have the opportunity to showcase their final year work at the end of their studies. This may be a local, national or online platform.

UCSE students will benefit from excellent student/tutor teaching time. All of our HE courses are timetabled for 13 hours which is way above the national average.

*Information on entry requirements can be found on page 70 or by checking our website. To see all information on each course and the course breakdown please visit:*

**[southessex.ac.uk/he/ucse-courses](https://southessex.ac.uk/he/ucse-courses)**

## **What's next/Careers:**

Make-Up Artist, Special effects, Retail make up artist, Beauty consultant, Hairdresser (theatre, film & television), Hair stylist, Hair colourist, Wig maker, Hair extension maker, Creative assistant, Brow artist, Travelling stylist, Theatre make up artist, Fitting prosthetics, Facial and body moulder, Medical aesthetics, Photographic stylist.

## **HAIR AND MAKEUP DESIGN AND APPLICATION FOR PRODUCTION COURSES**

Courses Validated by UAL

# ual:

### **Hair and Makeup Design and Application for Production BA (Hons) Top Up**

Duration: 1 Year

Campus: Purfleet & Thurrock

Cost per year: £8,000\*

### **Hair and Makeup Design and Application for Production FdA**

Duration: 2 Years

Campus: Purfleet

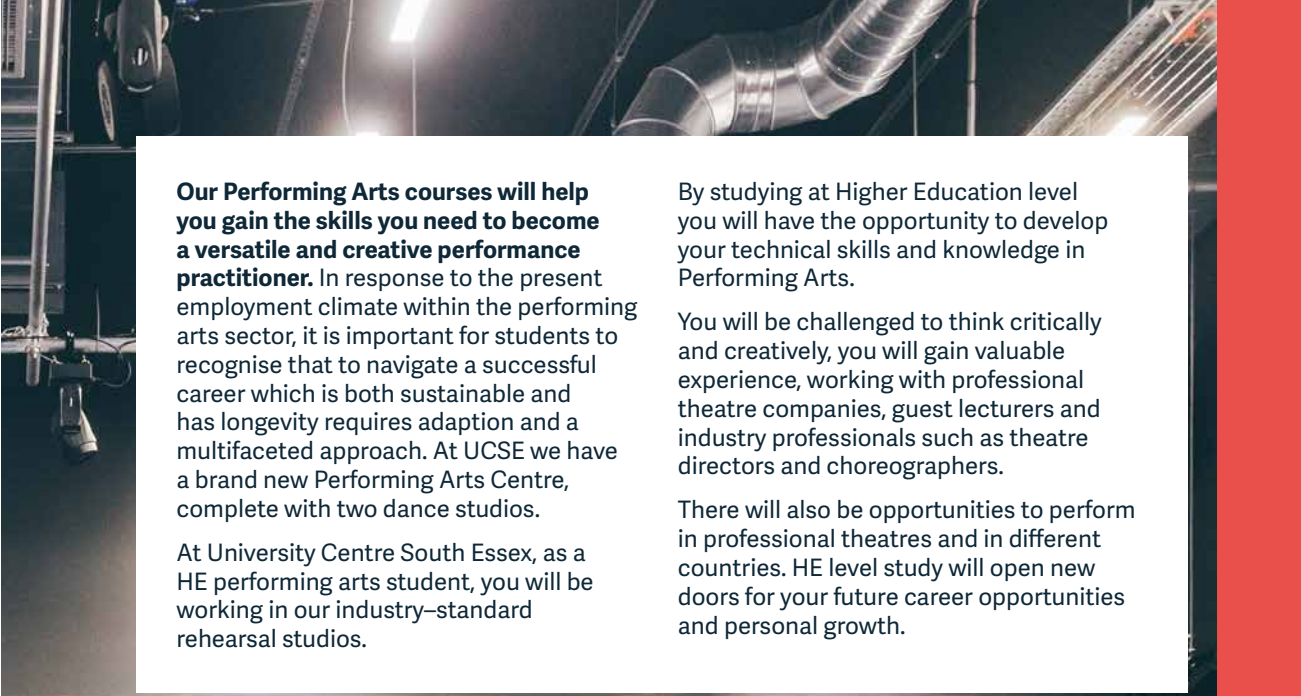
Cost per year: £8,000\*



\*Fees are per academic year for home/UK students. For more information about what's included in the cost please see course details on website. For additional costs please visit [www.southessex.ac.uk/he/he-fees-and-funding](https://www.southessex.ac.uk/he/he-fees-and-funding)

A photograph of a theater stage. The stage is dark, with a large black curtain hanging across the back. Above the curtain, there are stage lights and rigging. The floor of the stage is visible in the foreground. The overall atmosphere is dim and professional.

# PERFORMING ARTS



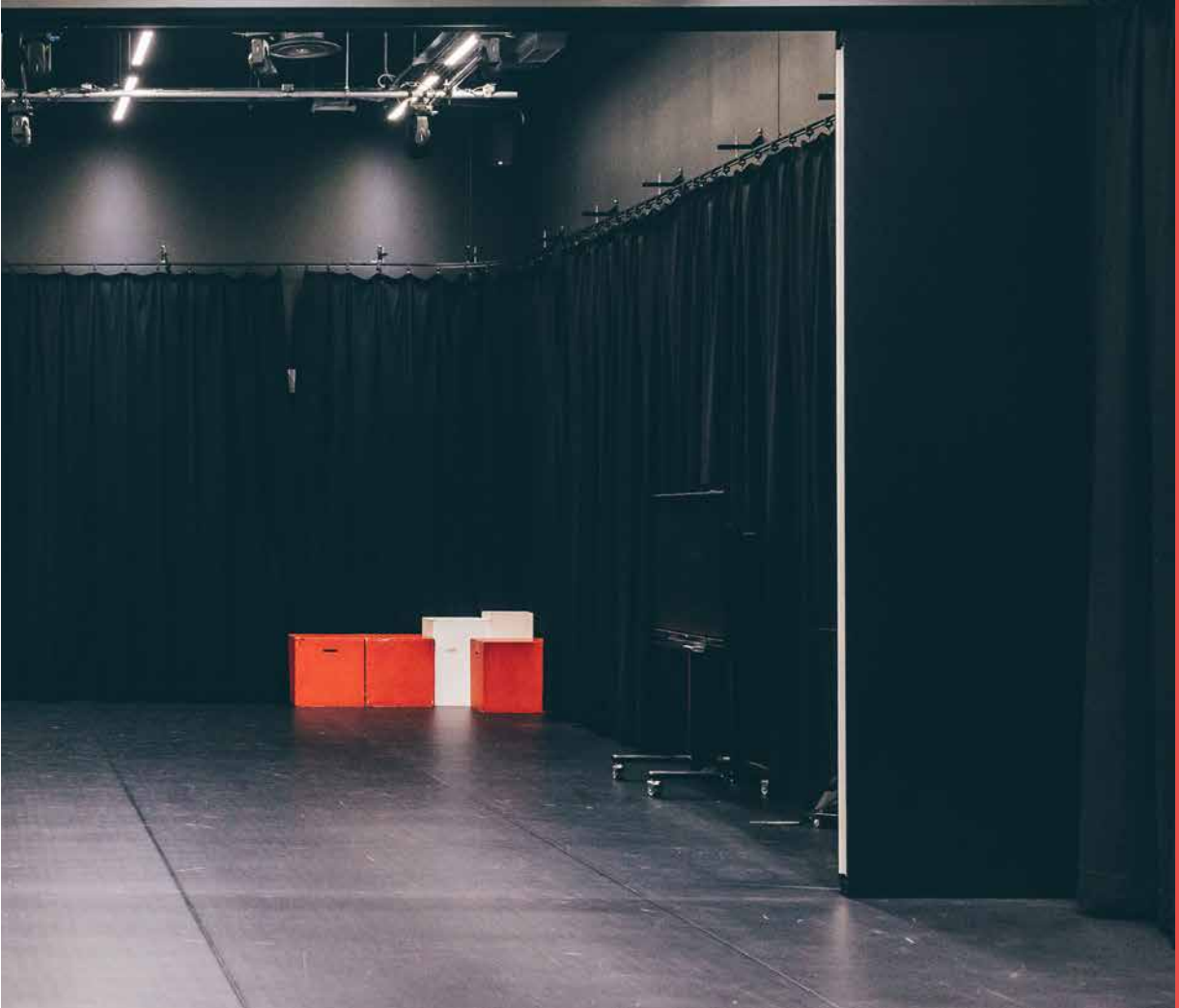
**Our Performing Arts courses will help you gain the skills you need to become a versatile and creative performance practitioner.** In response to the present employment climate within the performing arts sector, it is important for students to recognise that to navigate a successful career which is both sustainable and has longevity requires adaption and a multifaceted approach. At UCSE we have a brand new Performing Arts Centre, complete with two dance studios.

At University Centre South Essex, as a HE performing arts student, you will be working in our industry-standard rehearsal studios.

By studying at Higher Education level you will have the opportunity to develop your technical skills and knowledge in Performing Arts.

You will be challenged to think critically and creatively, you will gain valuable experience, working with professional theatre companies, guest lecturers and industry professionals such as theatre directors and choreographers.

There will also be opportunities to perform in professional theatres and in different countries. HE level study will open new doors for your future career opportunities and personal growth.





# COURSES, CAREERS AND ALL YOU NEED TO KNOW

Guest speakers, visiting lecturers and industry focussed workshops will be included in your course across your time at University Centre South Essex. These courses are designed to be vocationally driven with a focus on strong industry links delivered through a programme of exciting 'live' projects.

Final Year students will have the opportunity to showcase their final year work at the end of their studies. This may be a local, national or online platform. In the past this has included Festivals and at the Towngate Theatre.

UCSE students will benefit from excellent student/tutor teaching time. All of our HE courses are timetabled for 13 hours which is way above the national average.

*Information on entry requirements can be found on page 70 or by checking our website. To see all information on each course and the course breakdown please visit:*

**[southesex.ac.uk/he/ucse-courses](http://southesex.ac.uk/he/ucse-courses)**

**What's next/Careers:** Dancer, Actress, Actor, Roadie, Radio broadcaster, Musical theatre, Theatre, Choreographer, Backing Dancer, Community arts worker, Theatre director, Broadcast presenter, Talent agent, Theatre stage manager, Stage manager, Casting manager, Dramatherapist, Director, Drama coach, Playwright, Stunt performer, Performing arts teacher, Stagehand, Producer.

**Our graduate destinations:** X-Factor as a backing dancer, Own company making showreels and head shots for performers, Dancer at Disneyland Paris, In London with the internationally renowned community theatre company Chicken Shed, Touring Italy as a T.I.E performer with Theatrino Educo, Set up their own theatre company, performing their first show in June 2017 at The Hen & Chickens venue in Islington.

## PERFORMING ARTS COURSES

Course Validated by UAL

# ual:

### Performing Arts BA (Hons) Top Up

Duration: 1 Year

UCAS Code: W470

Campus: Southend/Thurrock

Cost per year: £8,000\*

Courses Validated by Pearson



### Performing Arts (Dance Pathway) (HND)

Duration: 2 Years

UCAS Code: 4B22

Campus: Southend

Cost per year: £7,000\*

### Performing Arts (Acting Pathway) (HND)

Duration: 2 Years

UCAS Code: H882

Campus: Southend

Cost per year: £7,000\*



\*Fees are per academic year for home/UK students. For more information about what's included in the cost please see course details on website. For additional costs please visit [www.southesex.ac.uk/he/he-fees-and-funding](http://www.southesex.ac.uk/he/he-fees-and-funding)

# ACCESS TO HE COURSES

We offer a range of Access to Higher Education (HE) courses that are designed to prepare adults for study at university level.

These courses are ideal if you have been out of education for some time, especially if you left school with too few qualifications to be able to go straight to university. They provide a good foundation in the knowledge and skills required for studying at university level, so that you will be confident and well prepared to go on to higher education.



**Access to Higher Education  
(Art and Design)  
Level 3 Diploma  
Campus: Southend  
Why should I do this course?**

This course is for those who would like to progress to a higher education course in a wide variety of art and design degree courses such as the Fine Art BA (Hons) but need to gain the required entry qualifications and skills.

**Access to Higher Education  
(Business Management)  
Level 3 Diploma  
Campus: Southend  
Why should I do this course?**

This course is for those who would like to progress to a higher education course in business, such as the Accounting and Finance BSc (Hons) or Business and Entrepreneurship BA (Hons), but need to gain the required entry qualifications and skills.

**Access to Higher Education  
(Health & Social Care)  
Level 3 Diploma  
Campus: Southend  
Why should I do this course?**

This course is ideal if you want to study on a higher education course in the health and social care sector but need to gain the required entry qualifications and skills.

**\*Access to Higher Education  
(Nursing and Midwifery)  
Level 3 Diploma  
Campus: Southend  
or Thurrock  
Why should I do this course?**

This course is for those who would like to progress to a higher education course in nursing, midwifery or other health-related subject, but need to gain the required entry qualifications and skills.

*\*Upon completion of the Access to HE Nursing and Midwifery course you may be eligible for a bursary of £5000 should you progress into nursing. Eligible students on courses from September 2020 will receive a payment of at least £5,000 a year which they will not need to pay back.*

**Access to Higher Education  
(Psychology and Sociology)  
Level 3 Diploma  
Campus: Southend  
or Thurrock  
Why should I do this course?**

This course is for people that would like to study on a higher education course in the social sciences e.g. the Psychology and Sociology BSc (Hons), but need to gain the required entry qualifications and skills.

**Access to Higher Education  
(Science)  
Level 3 Diploma  
Campus: Southend  
or Thurrock  
Why should I do this course?**

This course is for those who would like to progress to a higher education course in science such as Biomedical Science (Hons) degree course, but need to gain the required entry qualifications and skills.

**ACCESS TO HE  
COURSES**

Courses Validated by



UK Quality Assured



Please check website for current course fees  
[www.southessex.ac.uk/access](http://www.southessex.ac.uk/access)

# FEES & FUNDING



## **Will I be supported throughout my studies?**

Our aim is to support you from application through to your graduation and beyond with the highest quality information, advice and guidance. Our student support team has been assessed for, and attained, the highest quality standards.

## Do I have to pay anything up-front?

No, you don't have to pay anything before you start your studies. Student loans are available to UK national or Irish citizens settled under the EU settlement scheme or granted settled status for other reasons to cover tuition fees.

## Am I eligible for a tuition fee loan?

Whether you qualify for student finance depends on:

- Your university or college
- Your course
- If you've studied a higher education course before
- Your age
- Your nationality or residency status

You can visit the following website for more information

**[www.gov.uk/student-finance/who-qualifies](http://www.gov.uk/student-finance/who-qualifies)**

## Does household income affect me getting a tuition fee loan?

No, tuition fee loans are not based on household income. As long as you are eligible to apply, you will receive the full tuition fee amount.

## How do the loan repayments work?

This is repayable after you graduate and earn over the UK repayment threshold. Please see further guidance here:

**[www.gov.uk/repaying-your-student-loan/when-you-start-repaying](http://www.gov.uk/repaying-your-student-loan/when-you-start-repaying)**

Alternatively, if you wish, you can pay the costs of your tuition in full at enrolment.

For full information on how to apply please visit **[www.southessex.ac.uk/finance/fees-and-funding](http://www.southessex.ac.uk/finance/fees-and-funding)** or if you have any questions you can email **[HEfinance@southessex.ac.uk](mailto:HEfinance@southessex.ac.uk)**

Please note: If you already hold a higher education qualification when applying for entry to our higher education courses you may not be eligible for further tuition loan funding. We strongly urge you to contact Student Finance England direct **0845 300 50 90**.

To find out if you qualify, contact our higher education team by emailing **[HEadmissions@southessex.ac.uk](mailto:HEadmissions@southessex.ac.uk)**

## Will there be other costs?

Your main costs for higher education will be tuition fees; however, there may also be other costs to consider such as accommodation and living costs.

Additional costs you may incur are listed here **[www.southessex.ac.uk/he/he-fees-and-funding](http://www.southessex.ac.uk/he/he-fees-and-funding)**

## Do international students have other costs?

When you apply for a UK student visa, you will need to demonstrate that you have sufficient funds in place to cover your tuition fees and living costs. The amount of money you must have available for living expenses depends on the length of your course.

# ACCOMMODATION



The University of Essex allocate a proportion of their student accommodation in Queens Road, Southend to students who attend University Centre South Essex and South Essex College. The Halls of Residence offers 497 rooms in shared flats; these rooms are en-suite with eight to ten students sharing a flat with a full kitchen and dining facilities. There are also 64 studio flats with their own kitchen area. Adapted self-contained flats are available for students with a disability and can be requested on application. If you have access requirements you would like to discuss please email **HESupport@southessex.ac.uk** for further details.

Each room is networked with 24-hour high speed internet access provided at no extra cost. Residents can enjoy Wi-Fi, communal lounge/recreation area and laundry facilities.

### Who can apply for accommodation?

All students aged over 18 on full or part-time courses.

Please note that contract lengths vary in line with course dates, however all courses in Southend are a minimum of 42 weeks.

### How much does it cost?

As a guide, contracts for the academic year 2023-24 are expected to be available from £152.67 per week for a single en-suite study room and £188.30 per week for a studio room. Payments are due once a term and can be made in a variety of ways. Please see the University of Essex website for further details **[www.essex.ac.uk/life/southend-campus/accommodation](http://www.essex.ac.uk/life/southend-campus/accommodation)**

### Great reasons to stay:

- All-inclusive of bills, cleaning and internet
- Live with your friends; apply together as a group. Just five minutes to Southend Campus and easy transport links to other campuses
- Convenient location just off Southend High Street
- Out-of-hours residents' support team of student volunteers
- 24-hour reception and security presence

### How do I apply for accommodation?

If you are a new student to South Essex College or University Centre South Essex please complete this form and return it to **HESupport@southessex.ac.uk**

Upon completion and submission of your application form, and provided you have met the required criteria, you will receive an online offer and one-year room allocation.

If you need any advice about applying for accommodation you can contact the Undergraduate Support Advisor at University Centre South Essex by emailing **HESupport@southessex.ac.uk**



# FAQs - ADMISSION



## What does the university centre feel about vocational courses?

Most of our courses have a strong vocational element and applications from students taking certain vocational qualifications are welcomed. Students who have a mixed portfolio of qualifications (BTEC National Award/ Certificate and A-levels) are also welcomed.

## Does the university centre use unit grades in the admission process?

We do not use unit grades as standard procedure; however unit grade information may be used on receipt of examination results for individual applicants who do not meet the conditions of their offer.

## Will the university centre accept A level General Studies and A level Critical Thinking?

Yes. All of our departments accept either A-level General Studies or A-level Critical Thinking, as these awards require you to demonstrate a range of skills and knowledge.

## Is it necessary to have maths/ English qualifications to enter a degree course?

English is essential for all courses and maths is required for Games Design BSc (Hons).

## What qualifications do I need if English is not my first language?

The following standards are required:

- IELTS (Academic Version)
- 6.0 (for first year entry onto undergraduate courses)
- 6.5 (for direct entry onto the second year of undergraduate courses)
- Please see individual entry profiles as this may differ between courses
- TOEFL (paper-based test)
- 540, 76 on IBT for first year entry to all courses

The university centre can accept other tests including:

- Cambridge English: Advanced (CAE) - overall Cambridge English scale score of B2 with 52+ (prior to January 2015)
- Cambridge English: Advanced (CAE) - overall Cambridge English scale score of 169. No less than 162 in each skill (from January 2015)
- Test in English for Educational Purposes (TEEP) - 3
- GCE O-level or GCSE English Language or Use of English - grade C/4
- Hong Kong Certificate of English Education - 3
- International Baccalaureate English B Syllabus (Standard Level) - 4

## **Will any courses require me to sit additional aptitude tests?**

We will not ask you to take any of the existing aptitude tests (e.g. LNAT, BMAT) as a pre-requisite for admission. We believe that the existing system for assessing applicants provides enough information to make informed decisions.

## **Does the university centre accept the Extended Project?**

Yes we do accept the Extended Project.

Please see individual entry profiles as this may differ between courses

For information please visit  
**[www.southessex.ac.uk/he/he-entry-requirements](http://www.southessex.ac.uk/he/he-entry-requirements)**

## **What else will be taken into account when making offers?**

- GCSE performance, including possession of prerequisites (e.g. maths and/or English at grade C)
- AS-levels, including subject mix and declared results
- A-level or equivalent qualifications, including subject mix, need for prerequisites, and predicted grades
- Good personal statement, expressing clear motivation to study the subject and demonstrating academic skills such as critical thinking, analytical skills and problem-solving skills, as well as good communication skills
- Enrichment and extra-curricular activity, including work experience, qualifications (e.g. Duke of Edinburgh, Young Enterprise), positions of responsibility held, evidence of non-academic achievements and engagement in relevant cultural and social activities, which would be indicated in your personal statement
- Reference from school or college
- Interview/audition performance (if required)
- Portfolio evidence (if required)
- Any relevant mitigating circumstances which have a bearing upon your application



# ENTRY REQUIREMENTS

A young man with dark hair, wearing a blue button-down shirt and a purple lanyard with 'STUDENT' written on it, is sitting at a desk. He is looking down at a document in his hands, with his right hand resting on his chin in a thoughtful pose. He is also wearing a silver and gold watch on his left wrist. The background is a plain, light-colored wall.

We offer a range of Access to Higher Education (HE) courses that are designed to prepare adults for study at university level. These courses are ideal if you have been out of education for some time, especially if you left school with too few qualifications to be able to go straight to university. They provide a good foundation in the knowledge and skills required for studying at university level, so that you will be confident and well prepared to go on to higher education.

## Are the requirements the same for mature applicants?

UCAS provides useful tailored information about university study:

**[www.ucas.com/students/wheretostart/maturestudents](http://www.ucas.com/students/wheretostart/maturestudents)**

If you have already started a higher education course at another college or university and wish to transfer, we are happy to consider your application on the basis of qualifications obtained elsewhere. The college works within the guidelines of the structures of the European Credit Transfer System (ECTS).

Please contact **headmissions@southessex.ac.uk** in the first instance to discuss further before making an application. They will arrange for a tutor from the relevant course to contact you to discuss your individual situation before you formally apply.

## Access to Higher Education Diplomas

The college offers Access to HE courses for mature students who have the potential to study for a degree but do not have the relevant entry qualifications. This one year qualification will help you develop the knowledge, skills and confidence needed for degree level study even if you've been out of education for a long time. Access to HE Diplomas are recognised across the UK and Access to HE students are often high achievers who progress to exciting new careers. We offer Access to Higher Education Diplomas in a variety of subjects. Read more at **[www.southessex.ac.uk/access-to-higher-education](http://www.southessex.ac.uk/access-to-higher-education)**



## What are the entry requirements for international students?

If English isn't your first language, you will need to show that you have a recognised English language qualification. Entry requirements for international students can be found on our website at **[www.southessex.ac.uk/he/he-entry-requirements](http://www.southessex.ac.uk/he/he-entry-requirements)**

If you would like to discuss your eligibility before submitting a formal application, please contact our International Team on **01702 220400** or via email at **[international@southessex.ac.uk](mailto:international@southessex.ac.uk)** or **[HEadmissions@southessex.ac.uk](mailto:HEadmissions@southessex.ac.uk)**

## Where do I get information on visas and immigration?

Please see the UKCISA website and the British Council website. Both organisations produce useful information and guidance that will assist you in applying for a visa and help prepare you for life in the UK.

Read more at **[www.southessex.ac.uk/international](http://www.southessex.ac.uk/international)**



## Exceptional Entry

Some of our courses offer entry to mature students if they don't meet the entry requirements but do possess related professional experience or professional qualifications. You will need to demonstrate by interview, exceptional entry portfolio (this is likely to include evidence of paid or unpaid work experience) and/or written assessment that you are suitable for the course. In the first instance we suggest you email **HEadmissions@southessex.ac.uk** to discuss your application

## Portfolio requirements

You will be required to show a portfolio/showreel that demonstrates a high level of visual skill, creativity, commitment, and self-motivation. You need to show that you are capable of applying original thought to any given problem and that you have a high level of independent thinking. You may also be required to demonstrate evidence of any theoretical studies and examples of written work may be asked for. Each course that requires a portfolio or showreel at interview will have specific requirements.

Please check website for details

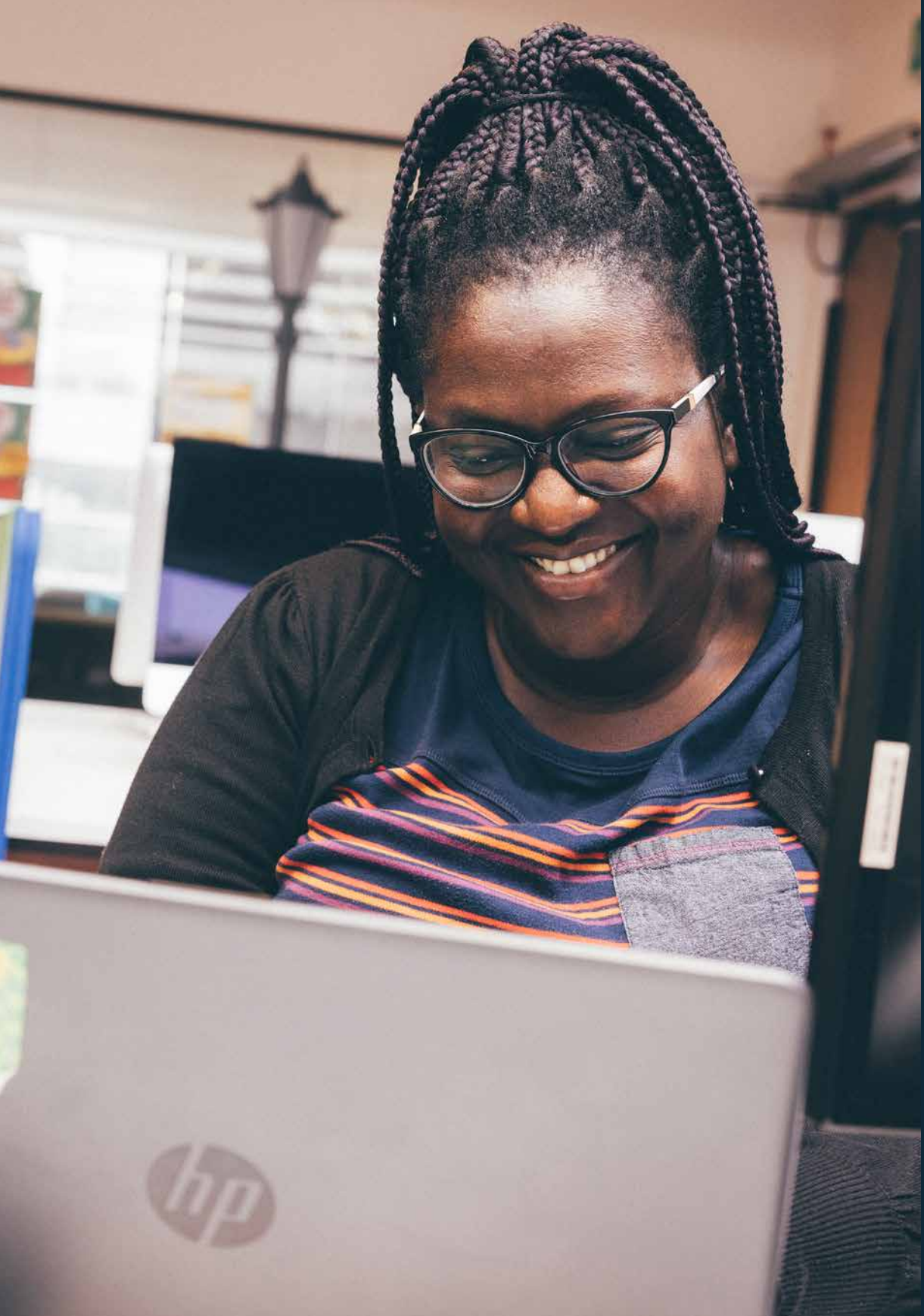
## DBS (Disclosure and Barring Service)

Your chosen course may require you to undergo an enhanced Disclosure and Barring Service (DBS) check before enrolling on the course. DBS identification documents are verified by trained staff in line with DBS guidelines as part of the admissions process. If applicants decide to choose us as their place of study our DBS team will be in contact to arrange this check usually around May/ June, prior to enrolment to ensure this is in place for the start of semester. There will be an administration charge for this service and you will be advised of this once you apply. Students will not be enrolled until their DBS Disclosure Certificate has been completed and issued. Disclosure and Barring checks cannot be carried out for applicants who are not, or have never been resident in the UK. Applicants who reside, or previously have resided overseas will be required to provide a criminal record check or certificate of good conduct from their country or countries of residence prior to entry on to the course.

Disclosure and Barring Service:

**[www.homeoffice.gov.uk/agencies-public-bodies/dbs/](http://www.homeoffice.gov.uk/agencies-public-bodies/dbs/)**





# ENTRY REQUIREMENTS

Please find the entry requirements for each course below. For any additional information please visit the website [www.southessex.ac.uk/he](http://www.southessex.ac.uk/he)

Course Overview	Specific Course	Entry Requirements
<b>Art &amp; Design</b>	Graphic Design & Illustration Interior Design Photography	<p>You will need a minimum of 64 UCAS points from one or more of the following:</p> <ul style="list-style-type: none"> <li>• A Levels</li> <li>• T Levels</li> <li>• BTEC/UAL Extended Diploma</li> <li>• Foundation Diploma in Art and Design (Level 3 or 4)</li> <li>• Or equivalent EU/International qualifications, such as International Baccalaureate Diploma</li> <li>• And English GCSE passes at grade 4 or above (grade A*-C)</li> <li>• You may be required to undertake a portfolio-based interview to access these courses. Portfolios should include examples of recent project work and may reference a variety of media.</li> </ul>
	Fine Art	<p>You will need a minimum of 64 UCAS points from one or more of the following:</p> <ul style="list-style-type: none"> <li>• At least two A-levels</li> <li>• BTEC/UAL Level 3 Extended Diploma/Diploma/Subsidiary Diploma/Certificate</li> <li>• BTEC National Award/Certificate/Diploma</li> <li>• Access to Higher Education Diploma (minimum 15 credits at merit or above)</li> <li>• International Baccalaureate</li> <li>• AQA Baccalaureate</li> <li>• Progression Diploma</li> <li>• Advanced Diploma</li> <li>• You may be required to undertake a portfolio-based interview to access these courses. Portfolios should include examples of recent project work and may reference a variety of media.</li> </ul>
<b>Computing</b>	Computing HNC & HND	<ul style="list-style-type: none"> <li>• A BTEC Level 3 qualification in IT</li> <li>• A GCE level profile that demonstrates strong performance in a relevant subject or an adequate performance in more than one GCE subject. This profile is likely to be supported by GCSE grades at A* to C or 4-9</li> <li>• Other related level 3 qualifications (e.g. Games Design, Media, Business)</li> <li>• An Access to Higher Education Certificate received from an approved further education institution</li> <li>• Related, recent work experience.</li> </ul>
<b>Costume &amp; Creative Media</b>	Costume Construction	<p>You will need a minimum of 64 UCAS points from one or more of the following:</p> <ul style="list-style-type: none"> <li>• At least two A-levels</li> <li>• BTEC Level 3 Extended Diploma/Diploma/Subsidiary Diploma/Certificate</li> <li>• BTEC National Award/Certificate/Diploma</li> <li>• International Baccalaureate</li> </ul>

Counselling, Psychology and Sociology		<ul style="list-style-type: none"> <li>• AQA Baccalaureate</li> <li>• Progression Diploma</li> <li>• Advanced Diploma</li> <li>• You will also need GCSE English at grade C (old specification) or Grade 4 (new specification) or above OR a Level 2 equivalent such as functional skills</li> <li>• You may be required to undertake a portfolio-based interview to access these courses. Portfolios should include examples of recent project work and may reference a variety of media.</li> </ul>
	Creative Media & Promotion	<p>You will need a minimum of 64 UCAS points from one or more of the following:</p> <ul style="list-style-type: none"> <li>• A-levels, preferably in a creative or media subject</li> <li>• BTEC National Diploma with a minimum of pass profile</li> <li>• Access to Higher Education Diploma Level 3 (minimum 15 credits at merit or above)</li> <li>• Higher National Diploma (for possible direct entry on to year two)</li> <li>• Foundation Diploma in Art and Design Level 4</li> <li>• You may be required to undertake a portfolio-based interview to access these courses. Portfolios should include examples of recent project work and may reference a variety of media.</li> </ul>
	Film & Television	<p>You will need a minimum of 64 UCAS points from one or more of the following:</p> <ul style="list-style-type: none"> <li>• A Levels</li> <li>• T Levels</li> <li>• BTEC/UAL Extended Diploma</li> <li>• Foundation Diploma in Art and Design (Level 3 or 4)</li> <li>• Or equivalent EU/International qualifications, such as International Baccalaureate Diploma</li> <li>• And English GCSE passes at grade 4 or above (grade A*-C)</li> <li>• You may be required to undertake a portfolio-based interview to access these courses. Portfolios should include examples of recent project work and may reference a variety of media.</li> </ul>
	Counselling	<p>A Minimum of 64 UCAS Points from one or more of the following:</p> <ul style="list-style-type: none"> <li>• At least two A-levels</li> <li>• BTEC Level 3 Extended Diploma/Diploma/Subsidiary Diploma/Certificate</li> <li>• BTEC National Award/Certificate/Diploma</li> <li>• International Baccalaureate</li> <li>• Access to Higher Education Diploma (minimum 15 credits at Merit or above)</li> <li>• GCSE English Language and Maths at Grade C (old specification) or Grade 4 (new specification) or above OR a Level 2 equivalent such as Functional Skills.</li> </ul>
	Psychology & Sociology	<p>You will need a minimum of 64 UCAS points from one or more of the following:</p> <ul style="list-style-type: none"> <li>• A Levels</li> <li>• T Levels</li> <li>• BTEC/UAL Extended Diploma</li> <li>• Foundation Diploma in Art and Design (Level 3 or 4)</li> <li>• Or equivalent EU/International qualifications, such as International Baccalaureate Diploma</li> <li>• GCSE English Language and Maths at Grade C (old specification) or Grade 4 (new specification) or above OR a Level 2 equivalent such as Functional Skills.</li> </ul>

<b>Criminology and Forensic Investigation</b>	Criminology & Forensics	<ul style="list-style-type: none"> <li>• 64 UCAS Tariff Points or above</li> <li>• At least two A levels</li> <li>• BTEC Level 3 Extended Diploma/Diploma/Subsidiary Diploma/Certificate</li> <li>• BTEC National Award/Certificate/Diploma</li> <li>• International Baccalaureate</li> <li>• Access to Higher Education Diploma (minimum 30 credits at Merit or above)</li> <li>• GCSE English Language and Maths at Grade C (old specification) or Grade 4 (new specification) or above OR a Level 2 equivalent such as Functional Skills.</li> </ul>
<b>Education and Training</b>	Early Years Care and Education BA (Hons)  Special Educational Needs and Disability Studies	<p>You will need a minimum of 64 UCAS points from one or more of the following:</p> <ul style="list-style-type: none"> <li>• A Levels</li> <li>• T Levels</li> <li>• BTEC/UAL Extended Diploma</li> <li>• Foundation Diploma in Art and Design (Level 3 or 4)</li> <li>• Or equivalent EU/International qualifications, such as International Baccalaureate Diploma</li> <li>• GCSE English Language and Maths at Grade C (old specification) or Grade 4 (new specification) or above OR a Level 2 equivalent such as Functional Skills.</li> </ul>
	Education and Training Level 5 Diploma	<ul style="list-style-type: none"> <li>• Must hold a Level 3 qualification in Subject Specialism</li> <li>• A minimum of 50 hours of teaching during each year of study (total 100 hours across 2 years of study)</li> <li>• A Mentor in the workplace who is a qualified teacher/lecturer (i.e. PgCE, Cert. Ed or DTLLs.)</li> <li>• A completed Teaching and Mentor Hours form from your workplace which you will be provided with prior to the diagnostic event to confirm both of the above</li> <li>• A satisfactory initial assessment in literacy and numeracy, which will include a 30-minute hand-written assessment</li> <li>• Applicants can revise prior to undertaking an Initial assessment for literacy and numeracy.</li> <li>• Work placements within an educational or community environment will require an enhanced DBS check</li> </ul>
	Certificate in Education (CertEd)	<ul style="list-style-type: none"> <li>• Hold a Level 3 qualification in their chosen subject specialism</li> <li>• Hold GCSE Maths and English at grade C / 4 or above, or hold an equivalent numeracy or literacy qualification at Level 2, such as Functional Skills – evidence of this will be required during the application cycle. Where a GCSE or equivalent is not held, an applicant may still be suitable for entry; this would be determined at interview.</li> <li>• We will consider applicants holding overseas qualifications that are equivalent to those described above. For an assessment of overseas qualifications contact National Academic Recognition Information Centre for the United Kingdom (NARIC). If NARIC deem your English language qualification not to be equivalent to a GCSE grade C or above, you must hold an IELTS qualification with a minimum score of 7 in each element. NB: Applicants must hold these qualifications before applying for the course.</li> <li>• Completion of satisfactory initial assessment in literacy and math</li> <li>• A 500-word written piece, prescribed following application and returned to the ITE team prior to or at interview (for details please contact ITETeam@southessex.ac.uk).</li> </ul>

		<ul style="list-style-type: none"> <li>• A completed Teaching and Mentor Hours form from your workplace to confirm your mentor and organisation</li> <li>• You are required to provide evidence of Satisfactory Disclosure and Barring Service (DBS)* enhanced check. In advance of starting the course and your placement. These are a requirement by law, in order to complete any work placements within an educational or community environment. Evidence of this will be required during the application process.</li> </ul> <p><b>Additional Entry requirements – Part Time</b></p> <ul style="list-style-type: none"> <li>• You must be working in a paid educational position.</li> </ul> <p><b>Additional Entry requirements – Full time</b></p> <ul style="list-style-type: none"> <li>• You must secure a suitable teaching placement.</li> </ul>
	Professional Graduate Certificate in Education (PgCE)	<ul style="list-style-type: none"> <li>• Hold an honours degree or equivalent. We use the UK NARIC (National Academic Recognition Information Centre) guidelines to make international comparisons. Hold GCSE Maths and English at grade C / 4 or above, or hold an equivalent numeracy or literacy qualification at Level 2, such as Functional Skills – evidence of this will be required during the application cycle. Where a GCSE or equivalent is not held, an applicant may still be suitable for entry; this would be determined at interview.</li> <li>• We will consider applicants holding overseas qualifications that are equivalent to those described above. For an assessment of overseas qualifications contact National Academic Recognition Information Centre for the United Kingdom (NARIC). If NARIC deem your English language qualification not to be equivalent to a GCSE grade C or above, you must hold an IELTS qualification with a minimum score of 7 in each element. NB: Applicants must hold these qualifications before applying for the course</li> <li>• A 500-word written piece, prescribed following application and returned to the ITE team prior to or at interview (for details please contact ITETeam@southessex.ac.uk).</li> <li>• A completed Teaching and Mentor Hours form from your workplace to confirm your mentor and organisation</li> <li>• You are required to provide evidence of Satisfactory Disclosure and Barring Service (DBS)* enhanced check. In advance of starting the course and your placement. These are a requirement by law, in order to complete any work placements within an educational or community environment. Evidence of this will be required during the application process</li> </ul> <p><b>Additional Entry requirements – Part Time</b></p> <ul style="list-style-type: none"> <li>• You must be working in a paid educational position.</li> </ul> <p><b>Additional Entry requirements – Full time</b></p> <ul style="list-style-type: none"> <li>• You must secure a suitable teaching placement.</li> </ul>
Engineering	Electrical and Electronic Engineering  General Engineering	<ul style="list-style-type: none"> <li>• BTEC Level 3 Engineering</li> <li>• AVCE/GNVQ in a related vocational area (Level 3)</li> <li>• A-levels in maths and science subjects</li> <li>• A related Access to Higher Education Certificate or other related Level 3 qualifications</li> <li>• Related work experience supported by GCSEs at grades 9-4 (A** to C) or equivalent</li> <li>• You will also need GCSE English and GCSE Maths at grade C (old specification) or grade 4 (new specification) or above OR a Level 2 equivalent such as functional skills</li> </ul>

<b>Games Design &amp; Animation</b>	Games Design	<p>You will need a minimum of 64 UCAS points from one or more of the following:</p> <ul style="list-style-type: none"> <li>• A Levels</li> <li>• T Levels</li> <li>• BTEC/UAL Extended Diploma</li> <li>• Foundation Diploma in Art and Design (Level 3 or 4)</li> <li>• Or equivalent EU/International qualifications, such as International Baccalaureate Diploma</li> <li>• And English GCSE passes at grade 4 or above (grade A*-C)</li> <li>• You may be required to undertake a portfolio-based interview to access these courses. Portfolios should include examples of recent project work and may reference a variety of media.</li> </ul>
	Animation	
<b>Hair and Makeup Design and Application for Production</b>	Hair and Makeup Design and Application for Production FdA	<p>A minimum of 64 UCAS points from one or more of the following:</p> <ul style="list-style-type: none"> <li>• Access to Higher Education Diploma</li> <li>• A Levels</li> <li>• T Levels</li> <li>• BTEC/UAL Extended Diploma</li> <li>• Related Foundation Diploma (Level 3 or 4)</li> <li>• Or equivalent EU/International qualifications, such as International Baccalaureate Diploma</li> <li>• And English GCSE passes at grade 4 or above (grade A*-C)</li> <li>• You may be required to undertake a portfolio-based interview to access these courses. Portfolios should include examples of recent project work and may reference a variety of media.</li> </ul>
	Hair and Makeup Design and Application for Production Top Up BA (Hons)	<ul style="list-style-type: none"> <li>• 240 credits (120 at Level 4 and 120 at Level 5) achieved through a Performing Arts qualification</li> <li>• IELTS (Academic) 6</li> <li>• IELTS 6.0 – minimum 5.5 across all components (Academic) 6</li> <li>• This list is not exhaustive, other qualifications may be considered.</li> <li>• Entry to this course will also be determined by the quality of your application, looking primarily at an audition set by the course team, personal statement and reference.</li> <li>• You may be required to undertake a portfolio-based interview to access these courses. Portfolios should include examples of recent project work and may reference a variety of media.</li> </ul>
<b>Performing Arts</b>	Performing Arts (Dance Pathway)	<p>A Minimum of 64 UCAS Points from one or more of the following:</p> <ul style="list-style-type: none"> <li>• At least two A-levels</li> <li>• BTEC Level 3 Extended Diploma/Diploma/Subsidiary Diploma/Certificate</li> <li>• BTEC National Award/Certificate/Diploma</li> <li>• International Baccalaureate</li> <li>• Access to Higher Education Diploma (minimum 15 credits at Merit or above)</li> <li>• Entry to this course will also be determined by the quality of your application, looking primarily at an audition set by the course team, personal statement and reference.</li> </ul>
	Performing Arts (Acting Pathway)	
	Performing Arts Top Up BA (Hons)	<ul style="list-style-type: none"> <li>• 240 credits (120 at Level 4 and 120 at Level 5) achieved through a Performing Arts qualification</li> <li>• IELTS (Academic) 6</li> <li>• IELTS 6.0 – minimum 5.5 across all components (Academic) 6</li> <li>• This list is not exhaustive, other qualifications may be considered. Entry to this course will also be determined by the quality of your application, looking primarily at an audition set by the course team, personal statement and reference.</li> </ul>



# COURSE LIST (A-Z)

Please find the information for each course currently running at University Centre South Essex.  
For more detailed information please visit the website [www.southessex.ac.uk/he](http://www.southessex.ac.uk/he)

Course	Award	Validated by	UCAS code	Duration	Campus
Animation	BA (Hons)	UAL	W615	3 Years	Basildon
Certificate in Education - Full Time	CertEd	The Open University		1 Year	Southend
Certificate in Education - Part Time - Evening	CertEd	The Open University		2 Years	Southend
Computing	HNC	Pearson		1 Year	Basildon
Computing	HND	Pearson		2 Years	Basildon
Costume Construction	BA (Hons)	UAL	B5L2	3 Years	Thurrock
Counselling	BA (Hons)	UEA	B940	3 Years	Southend
Creative Media & Promotion	BA (Hons)	UAL	W213	3 Years	Southend
Criminology & Forensic Investigation	BSc (Hons)	UEA	LF64	3 Years	Southend
Early Years Education	BA (Hons)	UEA	X310	3 Years	Southend
Education and Training	Level 5	City & Guilds		2 Years	Southend
Electrical and Electronic Engineering	HNC	Pearson		2 Years	Thurrock
Film & Television Production	BA (Hons)	UAL	P320	3 Years	Southend
Fine Art	BA (Hons)	UAL	W100	3 Years	Southend
Games Design	BSc (Hons)	UAL	WG24	3 Years	Basildon
General Engineering	HNC	Pearson		2 Years	Thurrock
Graphic Design & Illustration	BA (Hons)	UAL	W210	3 Years	Southend
Hair and Makeup Design and Application for Production	FdA	UAL	W450	2 Years	Purfleet
Hair and Makeup Design and Application for Production (Top Up)	BA (Hons)	UAL	W451	1 Year	Purfleet & Thurrock
Interior Design	BA (Hons)	UAL	W250	3 Years	Southend
Performing Arts (Acting Pathway)	HND	Pearson	H882	2 Years	Southend
Performing Arts (Dance Pathway)	HND	Pearson	4B22	2 Years	Southend
Performing Arts (Top Up)	BA (Hons)	UAL	W470	1 Year	Southend/Thurrock
Photography	BA (Hons)	UAL	W640	3 Years	Southend

Professional Graduate Certificate in Education (FE and Skills Sector) - Full Time	PgCE	The Open University		1 Years	Southend
Professional Graduate Certificate in Education (FE and Skills Sector) - Part Time	PgCE	The Open University		2 Years	Southend
Psychology & Sociology	BSc (Hons)	UEA	L340	3 Years	Southend
Special Educational Needs and Disability Studies	BA (Hons)	UEA	X161	3 Years	Basildon

# JOIN UCSE - HOW TO APPLY

Simply go onto our website & follow the steps below!

**[www.southessex.ac.uk/he](http://www.southessex.ac.uk/he)**

## Step 1

Find the course you want to apply to, visit the website, depending on the course this will either let you apply directly through our website (HNDs, HNC's, CertEd, Level 5 diploma & PgCe) or for Degree & FdA courses you will be redirected to UCAS.

## Step 2

Submit your application! Depending on the course you may be required to attend an informal interview either in person or online to showcase your portfolio. If you are applying for PGCE, CertEd or any educational related qualification then you will be invited in before the end of the Spring Term to complete a DBS.

## Step 3

Offer. You will either receive an unconditional or conditional application based on whether you already have the results required or if you're awaiting them.

## Step 4

Enrolment. We will send details of enrolment over the summer for courses starting in September.

Dates may be added or changed throughout the year

Keep up to date with all our open events by visiting:  
[www.southessex.ac.uk/heoe](http://www.southessex.ac.uk/heoe) or scan the QR code



# OPEN EVENTS

**The Forum Southend** | 10am – 12pm

**Saturday 18 May 2024**

**The Forum Southend** | 5pm – 7pm

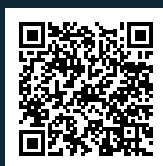
**Thursday 11 July 2024**



## UCSE FINAL MAJOR PROJECT SHOW 23/24

Interested in one of our creative courses?  
Take a look at our 2023-2024 final major project show at:

**[www.UCSESHOW.co.uk](http://www.UCSESHOW.co.uk)**



### **Alternative formats**

This prospectus can be made available in large print, audio and Braille formats upon request. Please contact student services at the college for further information. Email: [HESupport@southessex.ac.uk](mailto:HESupport@southessex.ac.uk) Telephone: **0345 52 12345**

### **Disclaimer**

The information in this document is believed to be accurate at the time of publication, however, changes may be made at a later date. The courses offered by University Centre South Essex are under constant review and development, so students and their representatives should always contact the college directly for the most up-to-date information or visit our website [www.southessex.ac.uk](http://www.southessex.ac.uk)

# UCC SHE



  
UNIVERSITY CENTRE  
south essex